

Ledge 60x60

RECESSED | NON-DALI EM SERIES

The Ledge product family is a set of luminaires especially designed for modern office environments and retail spaces. Ultra-flat housing made out of Aluminum & Polycarbonate. Recessed mounted, easy to install. Simple and compact design that supplies the maximum visual comfort.

The Ledge Family has several series, determined by various add-on and controls:

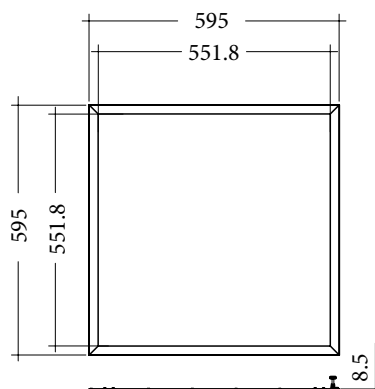
- Ledge Non-DALI – the standard for office spaces
- Ledge DALI – with DALI controls for illumination adjustments
- Ledge Non-DALI EM - with emergency lighting kit
- Ledge DALI EM - with DALI controls for illumination adjustments and emergency lighting kit

APPLICATIONS

Grocery & Supermarket | Retail | Office | Healthcare | Hospitality | DIY

FEATURES & BENEFITS

- CRI \geq 80 as standard
- 3 color temperatures: 3000K, 4000K, 6500K
- Long rated life: L80/B10@50.000h
- Luminaire efficiency: 115 lm/W @4000K



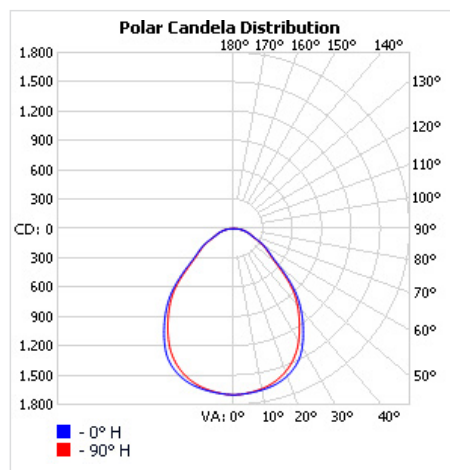
SPECIFICATIONS

| | |
|----------------------------------|---------------------------------|
| Power consumption | 30W, 35W, 39W |
| Dimensions | 595 x 595 x 8.5 mm±1mm |
| Weight | 2.6 Kg |
| Housing materials | Aluminium & Polycarbonate |
| Protection class | Safety class 2 |
| Power factor | ≥0.9 |
| AC Input [Vac] | 220 - 240 VAC |
| Lens angle [°] | 90° |
| Lifespan [h] | 50.000 |
| Housing color | ○ White - RAL 9003 |
| Lumen maintenance | L80/B10@50.000h at 25°C |
| IP Rating (General) | IP20 |
| IP Rating (Front facing) | IP20 |
| Control optional | - |
| Warranty [years] | 5 |
| Operating temperature range [°C] | -20°C ... +40°C / -4F ... +104F |
| Emergency option | EM1H, EM3H |

| | |
|-------------------|---------------------|
| Light application | Standard |
| CRI | CRI 80 |
| CCT [K] | 3000K, 4000K, 6500K |
| MacAdam | 4 |

CRI - Color rendering, CCT - Color temperature, MacAdam - Color consistency

LIGHT DISTRIBUTION



A90

RISK GROUP

RG0

The evaluation of photobiological safety is carried out according to the standard IEC 62471:2008 ("Photobiological safety of lamps and lamp systems"). Following the definition of the risk grouping system of the mentioned IEC standard, the LEDs mounted on this family fall into the class "No Risk (RG0 – No photobiological hazard)". Under real circumstances (regarding exposure time, pupils, observation distance, it is assumed that there is no endangerment to the eye from these devices. As a matter of principle, however, it should be mentioned that intense light sources have a high secondary exposure potential due to their blinding effect.

TOLERANCES

Luminous flux tolerances: -/+ 5%

Consumption tolerance: -/+ 5% for Non-DALI | -/+ 10% for Non-DALI & KIT EM | -/+ 10% for DALI | -/+ 15% for DALI & KIT EM

BATTERY WARRANTY

Non-DALI EM & DALI EM: 12 months warranty

Non-DALI & DALI: -

MAXIMUM NO. OF LUMINAIRES ON A CIRCUIT

| Luminaire Power(W) | Control type | Circuit Breaker Type | | | | | |
|--------------------|--------------|----------------------|----|----|-----|----|----|
| | | B | | | C | | |
| | | 20 | 16 | 10 | 20 | 16 | 10 |
| 30W | Non-DALI | 110 | 85 | 55 | 110 | 85 | 55 |
| 35W | Non-DALI | 95 | 75 | 45 | 95 | 75 | 45 |
| 39W | Non-DALI | 75 | 65 | 35 | 75 | 65 | 35 |
| 30-39W | DALI | 29 | 23 | 14 | 48 | 38 | 23 |

SKU SPECIFICATIONS

| Product Code | Dimensions (mm) | CCT (K) | Lumens (lm) | Power (W) | Eff. (lm/watt) | Lens Angle (°) |
|---|------------------------|---------|-------------|-----------|----------------|----------------|
| CRI 80 | | | | | | |
| 113594 Ledge SL 6060/3000/30W/80/A90/EM1H | 595 x 595 x 8.5 mm±1mm | 3000K | 3415 | 30W | 114 | 90° |
| 113595 Ledge SL 6060/4000/30W/80/A90/EM1H | 595 x 595 x 8.5 mm±1mm | 4000K | 3440 | 30W | 115 | 90° |
| 113596 Ledge SL 6060/6500/30W/80/A90/EM1H | 595 x 595 x 8.5 mm±1mm | 6500K | 3440 | 30W | 115 | 90° |
| 113597 Ledge SL 6060/3000/35W/80/A90/EM1H | 595 x 595 x 8.5 mm±1mm | 3000K | 3885 | 35W | 111 | 90° |
| 113598 Ledge SL 6060/4000/35W/80/A90/EM1H | 595 x 595 x 8.5 mm±1mm | 4000K | 3915 | 35W | 112 | 90° |
| 113599 Ledge SL 6060/6500/35W/80/A90/EM1H | 595 x 595 x 8.5 mm±1mm | 6500K | 3915 | 35W | 112 | 90° |
| 113600 Ledge SL 6060/3000/39W/80/A90/EM1H | 595 x 595 x 8.5 mm±1mm | 3000K | 4280 | 39W | 110 | 90° |
| 113601 Ledge SL 6060/4000/39W/80/A90/EM1H | 595 x 595 x 8.5 mm±1mm | 4000K | 4315 | 39W | 111 | 90° |
| 113602 Ledge SL 6060/6500/39W/80/A90/EM1H | 595 x 595 x 8.5 mm±1mm | 6500K | 4315 | 39W | 111 | 90° |
| 113618 Ledge SL 6060/3000/30W/80/A90/EM3H | 595 x 595 x 8.5 mm±1mm | 3000K | 3415 | 30W | 114 | 90° |
| 113619 Ledge SL 6060/4000/30W/80/A90/EM3H | 595 x 595 x 8.5 mm±1mm | 4000K | 3440 | 30W | 115 | 90° |
| 113620 Ledge SL 6060/6500/30W/80/A90/EM3H | 595 x 595 x 8.5 mm±1mm | 6500K | 3440 | 30W | 115 | 90° |
| 113621 Ledge SL 6060/3000/35W/80/A90/EM3H | 595 x 595 x 8.5 mm±1mm | 3000K | 3885 | 35W | 111 | 90° |
| 113622 Ledge SL 6060/4000/35W/80/A90/EM3H | 595 x 595 x 8.5 mm±1mm | 4000K | 3915 | 35W | 112 | 90° |
| 113623 Ledge SL 6060/6500/35W/80/A90/EM3H | 595 x 595 x 8.5 mm±1mm | 6500K | 3915 | 35W | 112 | 90° |
| 113624 Ledge SL 6060/3000/39W/80/A90/EM3H | 595 x 595 x 8.5 mm±1mm | 3000K | 4280 | 39W | 110 | 90° |
| 113625 Ledge SL 6060/4000/39W/80/A90/EM3H | 595 x 595 x 8.5 mm±1mm | 4000K | 4315 | 39W | 111 | 90° |
| 113626 Ledge SL 6060/6500/39W/80/A90/EM3H | 595 x 595 x 8.5 mm±1mm | 6500K | 4315 | 39W | 111 | 90° |