



## Ennio UP&DOWN PC

### SUSPENDED | DALI EM SERIES

Ennio UP&DOWN PC is a versatile suspended luminaire that emits light both upwards and downwards. Providing indirect light on its superior side, Ennio creates a mellow ambient in the working space with reduced glare due to indirect lighting by projecting the light beam towards the ceiling.

Tunable white - Light color temperature can be adjusted to reflect the need or mood of the user. The light provided by the luminaires can be changed from warm to cold, in a range between 2700K - 6500K.

PI-LED - Combines variable white light and light of the RGB color system in one single light source. It can vary the color temperature between 2700K - 6500K along Planckian curve in the course of a day.

Ennio UP&DOWN PC has several series, determined by various add-on and controls:

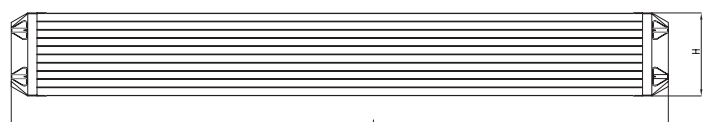
- Ennio UP&DOWN PC Non-DALI: the standard version
- Ennio UP&DOWN PC Non-DALI EM: the standard version with emergency option (UP)
- Ennio UP&DOWN PC DALI: with DALI controls for illumination adjustments
- **Ennio UP&DOWN PC DALI EM: with DALI controls for illumination adjustments and emergency options (UP)**
- Ennio UP&DOWN PC TW: the tunable white system with adjustable colour temperature
- Ennio UP&DOWN PC PI-LED - simulates the spectral quality of natural daylight over the entire day.

### FEATURES & BENEFITS

- CRI 80 as standard
- Color temperatures: 3000K, 4000K, 5000K and 6500K
- Long rated life: L90/B10@50.000h
- Luminaire efficiency (UP/DOWN): 103/108 lm/w @4000K

### APPLICATION

Office | Healthcare | Hospitality | DIY

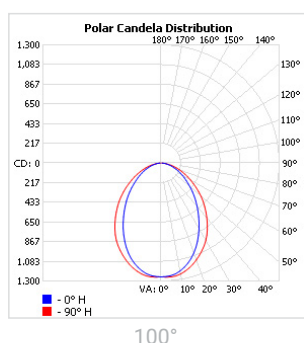


## SPECIFICATIONS

|                                |                                 |                         |                          |                           |
|--------------------------------|---------------------------------|-------------------------|--------------------------|---------------------------|
| Power consumption (UP)         | 32W, 38W, 50W                   | 37W, 50W, 60W           | 64W, 76W, 100W           | 74W, 100W, 120W           |
| Power consumption (DOWN)       | 15W, 25W, 32W, 38W, 50W         | 23W, 33W, 37W, 50W, 60W | 30W, 50W, 64W, 76W, 100W | 46W, 66W, 74W, 100W, 120W |
| Dimensions                     | 1201 x 57 x 81 ± 1mm            | 1482 x 57 x 81 ± 1mm    | 2323 x 57 x 81 ± 1mm     | 2885 x 57 x 81 ± 1mm      |
| Weight                         | 3.4 kg - 3.5 kg                 | 4.1 kg - 4.1 kg         | 6.4 kg - 6.5 kg          | 7.4 kg - 7.6 kg           |
| DALI addresses                 | 3 addresses                     | 3 addresses             | 6 addresses              | 6 addresses               |
| Housing materials              | Aluminum & Polycarbonate        |                         |                          |                           |
| IK code                        | IK02                            |                         |                          |                           |
| THD (at 230V, 50Hz, Full load) | <9%                             |                         |                          |                           |
| Protection class               | Safety class 1                  |                         |                          |                           |
| Operating temperature [°C]     | +5°C ... +45°C / +41F ... +113F |                         |                          |                           |
| Operating humidity [%]         | 10 ÷ 85                         |                         |                          |                           |
| Power factor                   | ≥0.95                           |                         |                          |                           |
| AC Input [Vac]                 | 220 - 240 VAC                   |                         |                          |                           |
| Lens angle [°] (UP/DOWN)       | 100°                            |                         |                          |                           |
| Lifespan [h]                   | 50,000                          |                         |                          |                           |
| Housing color                  | ● Anodised black                |                         |                          |                           |
| Lumen maintenance              | L90/B10@50.000h at 25°C         |                         |                          |                           |
| IP factor                      | IP20                            |                         |                          |                           |
| Control optional               | DALI                            |                         |                          |                           |
| Warranty [years]               | 5                               |                         |                          |                           |
| Storage temperature range [°C] | +5°C ... +25°C / +41F ... +77F  |                         |                          |                           |
| Emergency option               | EM1H , EM3H                     |                         |                          |                           |
| Efficiency@4000K (UP)          | 103 lm/W                        |                         |                          |                           |
| Efficiency@4000K (DOWN)        | 108 lm/W                        |                         |                          |                           |
| Light application              | Standard                        |                         |                          |                           |
| CRI                            | CRI 80                          |                         |                          |                           |
| CCT [K]                        | 3000K, 4000K, 5000K, 6500K      |                         |                          |                           |
| MacAdam                        | 4                               |                         |                          |                           |

CRI - Color rendering, CCT - Color temperature, MacAdam - Color consistency

## LIGHT DISTRIBUTION



**TOLERANCES****Luminous flux tolerances:** -/+ 5%**Consumption tolerance:** -/+ 5% for Non-DALI | -/+ 10% for Non-DALI & KIT EM | -/+ 10% for DALI | -/+ 15% for DALI & KIT EM**BATTERY WARRANTY****Non-DALI EM & DALI EM:** 12 months warranty**Non-DALI & DALI:** -**MAXIMUM NO. OF LUMINAIRES ON A CIRCUIT FOR DIMENSIONS 1214 X 57 X 81 ± 1MM AND 1501 X 57 X 81 ± 1MM**

| Luminaire Power(W) | Control type | Circuit Breaker Type |    |    |    |    |    |
|--------------------|--------------|----------------------|----|----|----|----|----|
|                    |              | B                    |    |    | C  |    |    |
|                    |              | 20                   | 16 | 10 | 20 | 16 | 10 |
| < 100W             | Non-DALI     | 19                   | 15 | 9  | 31 | 26 | 16 |
| ≥ 100W             | Non-DALI     | 19                   | 15 | 9  | 31 | 26 | 16 |
| < 160W             | DALI         | 13                   | 10 | 6  | 22 | 17 | 10 |

**MAXIMUM NO. OF LUMINAIRES ON A CIRCUIT FOR DIMENSIONS 2362 X 57 X 81 ± 1MM AND 2936 X 57 X 81 ± 1MM**

| Luminaire Power(W) | Control type | Circuit Breaker Type |    |    |    |    |    |
|--------------------|--------------|----------------------|----|----|----|----|----|
|                    |              | B                    |    |    | C  |    |    |
|                    |              | 20                   | 16 | 10 | 20 | 16 | 10 |
| < 50W              | Non-DALI     | 9                    | 7  | 4  | 15 | 12 | 7  |
| ≥ 50W              | Non-DALI     | 9                    | 7  | 4  | 15 | 12 | 7  |
| < 80W              | DALI         | 6                    | 5  | 3  | 11 | 8  | 5  |

**RISK GROUP**

|                                |     |
|--------------------------------|-----|
| <b>Standard (CRI80)</b>        | RG1 |
| <b>FOOD (BVF, FBS, FSM)</b>    | RG1 |
| <b>FOOD ≤35W (FZM, FSH)</b>    | RG1 |
| <b>FOOD &gt;35W (FZM, FSH)</b> | RG2 |
| <b>FAS</b>                     | RG1 |
| <b>AMB2200</b>                 | RG1 |
| <b>ART</b>                     | RG1 |
| <b>AGI</b>                     | RG1 |
| <b>CRI90</b>                   | RG1 |
| <b>CRI95</b>                   | RG1 |
| <b>ENT</b>                     | RG1 |

**RG1**

The evaluation of photobiological safety is carried out according to the standard IEC 62471:2008 ("Photobiological safety of lamps and lamp systems"). Following the definition of the risk grouping system of the mentioned IEC standard, the LEDs mounted on this family fall into the class "Low Risk (RG1 – No photobiological hazard under normal behavioral limitations)". Under real circumstances (regarding exposure time, pupils, observation distance), it is assumed that there is no endangerment to the eye from these devices. As a matter of principle, however, it should be mentioned that intense light sources have a high secondary exposure potential due to their blinding effect.

**RG2**

The evaluation of photobiological safety is carried out according to the standard IEC 62471:2008 ("Photobiological safety of lamps and lamp systems"). Following the definition of the risk grouping system of the mentioned IEC standard, the LEDs mounted on this family fall into the class "Moderate Risk (RG2)". Under real circumstances (regarding exposure time, pupils, observation distance), it is assumed that there is no endangerment to the eye from these devices. As a matter of principle, however, it should be mentioned that intense light sources have a high secondary exposure potential due to their blinding effect.

## SKU SPECIFICATIONS

| Product Code                                 | Dimensions (mm)      | CCT (K) | Lumens (lm) (UP/DOWN) | Power (W) (UP/DOWN) | Eff. (lm/watt) (UP/DOWN) | Lens Angle (°) (UP/DOWN) |
|--|----------------------|---------|-----------------------|---------------------|--------------------------|--------------------------|
| <b>CRI 80</b>                                |                      |         |                       |                     |                          |                          |
| 2993592 Ennio S120/3000/32W/15W/80/A100/EM1H | 1201 x 57 x 81 ± 1mm | 3000    | 3190/1530             | 32W/15W             | 100/102                  | 100°                     |
| 2993593 Ennio S120/3000/32W/25W/80/A100/EM1H | 1201 x 57 x 81 ± 1mm | 3000    | 3190/2680             | 32W/25W             | 100/108                  | 100°                     |
| 2993594 Ennio S120/3000/32W/32W/80/A100/EM1H | 1201 x 57 x 81 ± 1mm | 3000    | 3190/3190             | 32W/32W             | 100/100                  | 100°                     |
| 2993595 Ennio S120/3000/38W/15W/80/A100/EM1H | 1201 x 57 x 81 ± 1mm | 3000    | 3810/1530             | 38W/15W             | 101/102                  | 100°                     |
| 2993596 Ennio S120/3000/38W/25W/80/A100/EM1H | 1201 x 57 x 81 ± 1mm | 3000    | 3810/2680             | 38W/25W             | 101/108                  | 100°                     |
| 2993597 Ennio S120/3000/38W/32W/80/A100/EM1H | 1201 x 57 x 81 ± 1mm | 3000    | 3810/3190             | 38W/32W             | 101/100                  | 100°                     |
| 2993598 Ennio S120/3000/38W/38W/80/A100/EM1H | 1201 x 57 x 81 ± 1mm | 3000    | 3810/3810             | 38W/38W             | 101/101                  | 100°                     |
| 2993599 Ennio S120/3000/50W/15W/80/A100/EM1H | 1201 x 57 x 81 ± 1mm | 3000    | 4620/1530             | 50W/15W             | 93/102                   | 100°                     |
| 2993600 Ennio S120/3000/50W/25W/80/A100/EM1H | 1201 x 57 x 81 ± 1mm | 3000    | 4620/2680             | 50W/25W             | 93/108                   | 100°                     |
| 2993601 Ennio S120/3000/50W/32W/80/A100/EM1H | 1201 x 57 x 81 ± 1mm | 3000    | 4620/3190             | 50W/32W             | 93/100                   | 100°                     |
| 2993602 Ennio S120/3000/50W/38W/80/A100/EM1H | 1201 x 57 x 81 ± 1mm | 3000    | 4620/3810             | 50W/38W             | 93/101                   | 100°                     |
| 2993603 Ennio S120/3000/50W/50W/80/A100/EM1H | 1201 x 57 x 81 ± 1mm | 3000    | 4620/4620             | 50W/50W             | 93/93                    | 100°                     |
| 2993604 Ennio S120/4000/32W/15W/80/A100/EM1H | 1201 x 57 x 81 ± 1mm | 4000    | 3190/1530             | 32W/15W             | 100/102                  | 100°                     |
| 2993605 Ennio S120/4000/32W/25W/80/A100/EM1H | 1201 x 57 x 81 ± 1mm | 4000    | 3190/2680             | 32W/25W             | 100/108                  | 100°                     |
| 2993606 Ennio S120/4000/32W/32W/80/A100/EM1H | 1201 x 57 x 81 ± 1mm | 4000    | 3190/3190             | 32W/32W             | 100/100                  | 100°                     |
| 2993607 Ennio S120/4000/38W/15W/80/A100/EM1H | 1201 x 57 x 81 ± 1mm | 4000    | 3810/1530             | 38W/15W             | 101/102                  | 100°                     |
| 2993608 Ennio S120/4000/38W/25W/80/A100/EM1H | 1201 x 57 x 81 ± 1mm | 4000    | 3810/2680             | 38W/25W             | 101/108                  | 100°                     |
| 2993609 Ennio S120/4000/38W/32W/80/A100/EM1H | 1201 x 57 x 81 ± 1mm | 4000    | 3810/3190             | 38W/32W             | 101/100                  | 100°                     |
| 2993610 Ennio S120/4000/38W/38W/80/A100/EM1H | 1201 x 57 x 81 ± 1mm | 4000    | 3810/3810             | 38W/38W             | 101/101                  | 100°                     |
| 2993611 Ennio S120/4000/50W/15W/80/A100/EM1H | 1201 x 57 x 81 ± 1mm | 4000    | 4620/1530             | 50W/15W             | 93/102                   | 100°                     |
| 2993612 Ennio S120/4000/50W/25W/80/A100/EM1H | 1201 x 57 x 81 ± 1mm | 4000    | 4620/2680             | 50W/25W             | 93/108                   | 100°                     |
| 2993613 Ennio S120/4000/50W/32W/80/A100/EM1H | 1201 x 57 x 81 ± 1mm | 4000    | 4620/3190             | 50W/32W             | 93/100                   | 100°                     |
| 2993614 Ennio S120/4000/50W/38W/80/A100/EM1H | 1201 x 57 x 81 ± 1mm | 4000    | 4620/3810             | 50W/38W             | 93/101                   | 100°                     |
| 2993615 Ennio S120/4000/50W/50W/80/A100/EM1H | 1201 x 57 x 81 ± 1mm | 4000    | 4620/4620             | 50W/50W             | 93/93                    | 100°                     |
| 2993616 Ennio S120/5000/32W/15W/80/A100/EM1H | 1201 x 57 x 81 ± 1mm | 5000    | 3190/1530             | 32W/15W             | 100/102                  | 100°                     |
| 2993617 Ennio S120/5000/32W/25W/80/A100/EM1H | 1201 x 57 x 81 ± 1mm | 5000    | 3190/2680             | 32W/25W             | 100/108                  | 100°                     |
| 2993618 Ennio S120/5000/32W/32W/80/A100/EM1H | 1201 x 57 x 81 ± 1mm | 5000    | 3190/3190             | 32W/32W             | 100/100                  | 100°                     |
| 2993619 Ennio S120/5000/38W/15W/80/A100/EM1H | 1201 x 57 x 81 ± 1mm | 5000    | 3810/1530             | 38W/15W             | 101/102                  | 100°                     |
| 2993620 Ennio S120/5000/38W/25W/80/A100/EM1H | 1201 x 57 x 81 ± 1mm | 5000    | 3810/2680             | 38W/25W             | 101/108                  | 100°                     |
| 2993621 Ennio S120/5000/38W/32W/80/A100/EM1H | 1201 x 57 x 81 ± 1mm | 5000    | 3810/3190             | 38W/32W             | 101/100                  | 100°                     |
| 2993622 Ennio S120/5000/38W/38W/80/A100/EM1H | 1201 x 57 x 81 ± 1mm | 5000    | 3810/3810             | 38W/38W             | 101/101                  | 100°                     |
| 2993623 Ennio S120/5000/50W/15W/80/A100/EM1H | 1201 x 57 x 81 ± 1mm | 5000    | 4620/1530             | 50W/15W             | 93/102                   | 100°                     |
| 2993624 Ennio S120/5000/50W/25W/80/A100/EM1H | 1201 x 57 x 81 ± 1mm | 5000    | 4620/2680             | 50W/25W             | 93/108                   | 100°                     |
| 2993625 Ennio S120/5000/50W/32W/80/A100/EM1H | 1201 x 57 x 81 ± 1mm | 5000    | 4620/3190             | 50W/32W             | 93/100                   | 100°                     |
| 2993626 Ennio S120/5000/50W/38W/80/A100/EM1H | 1201 x 57 x 81 ± 1mm | 5000    | 4620/3810             | 50W/38W             | 93/101                   | 100°                     |
| 2993627 Ennio S120/5000/50W/50W/80/A100/EM1H | 1201 x 57 x 81 ± 1mm | 5000    | 4620/4620             | 50W/50W             | 93/93                    | 100°                     |
| 2993628 Ennio S120/6500/32W/15W/80/A100/EM1H | 1201 x 57 x 81 ± 1mm | 6500    | 3190/1530             | 32W/15W             | 100/102                  | 100°                     |
| 2993629 Ennio S120/6500/32W/25W/80/A100/EM1H | 1201 x 57 x 81 ± 1mm | 6500    | 3190/2680             | 32W/25W             | 100/108                  | 100°                     |
| 2993630 Ennio S120/6500/32W/32W/80/A100/EM1H | 1201 x 57 x 81 ± 1mm | 6500    | 3190/3190             | 32W/32W             | 100/100                  | 100°                     |
| 2993631 Ennio S120/6500/38W/15W/80/A100/EM1H | 1201 x 57 x 81 ± 1mm | 6500    | 3810/1530             | 38W/15W             | 101/102                  | 100°                     |
| 2993632 Ennio S120/6500/38W/25W/80/A100/EM1H | 1201 x 57 x 81 ± 1mm | 6500    | 3810/2680             | 38W/25W             | 101/108                  | 100°                     |
| 2993633 Ennio S120/6500/38W/32W/80/A100/EM1H | 1201 x 57 x 81 ± 1mm | 6500    | 3810/3190             | 38W/32W             | 101/100                  | 100°                     |
| 2993634 Ennio S120/6500/38W/38W/80/A100/EM1H | 1201 x 57 x 81 ± 1mm | 6500    | 3810/3810             | 38W/38W             | 101/101                  | 100°                     |
| 2993635 Ennio S120/6500/50W/15W/80/A100/EM1H | 1201 x 57 x 81 ± 1mm | 6500    | 4620/1530             | 50W/15W             | 93/102                   | 100°                     |
| 2993636 Ennio S120/6500/50W/25W/80/A100/EM1H | 1201 x 57 x 81 ± 1mm | 6500    | 4620/2680             | 50W/25W             | 93/108                   | 100°                     |
| 2993637 Ennio S120/6500/50W/32W/80/A100/EM1H | 1201 x 57 x 81 ± 1mm | 6500    | 4620/3190             | 50W/32W             | 93/100                   | 100°                     |
| 2993638 Ennio S120/6500/50W/38W/80/A100/EM1H | 1201 x 57 x 81 ± 1mm | 6500    | 4620/3810             | 50W/38W             | 93/101                   | 100°                     |
| 2993639 Ennio S120/6500/50W/50W/80/A100/EM1H | 1201 x 57 x 81 ± 1mm | 6500    | 4620/4620             | 50W/50W             | 93/93                    | 100°                     |

## SKU SPECIFICATIONS

| Product Code                                 | Dimensions (mm)      | CCT (K) | Lumens (lm) (UP/DOWN) | Power (W) (UP/DOWN) | Eff. (lm/watt) (UP/DOWN) | Lens Angle (°) (UP/DOWN) |
|--|----------------------|---------|-----------------------|---------------------|--------------------------|--------------------------|
| <b>CRI 80</b>                                |                      |         |                       |                     |                          |                          |
| 2993640 Ennio S150/3000/37W/23W/80/A100/EM1H | 1482 x 57 x 81 ± 1mm | 3000    | 3810/2450             | 37W/23W             | 103/107                  | 100°                     |
| 2993641 Ennio S150/3000/37W/33W/80/A100/EM1H | 1482 x 57 x 81 ± 1mm | 3000    | 3810/3555             | 37W/33W             | 103/108                  | 100°                     |
| 2993642 Ennio S150/3000/37W/37W/80/A100/EM1H | 1482 x 57 x 81 ± 1mm | 3000    | 3810/3810             | 37W/37W             | 103/103                  | 100°                     |
| 2993643 Ennio S150/3000/50W/23W/80/A100/EM1H | 1482 x 57 x 81 ± 1mm | 3000    | 5000/2450             | 50W/23W             | 100/107                  | 100°                     |
| 2993644 Ennio S150/3000/50W/33W/80/A100/EM1H | 1482 x 57 x 81 ± 1mm | 3000    | 5000/3555             | 50W/33W             | 100/108                  | 100°                     |
| 2993645 Ennio S150/3000/50W/37W/80/A100/EM1H | 1482 x 57 x 81 ± 1mm | 3000    | 5000/3810             | 50W/37W             | 100/103                  | 100°                     |
| 2993646 Ennio S150/3000/50W/50W/80/A100/EM1H | 1482 x 57 x 81 ± 1mm | 3000    | 5000/5000             | 50W/50W             | 100/100                  | 100°                     |
| 2993647 Ennio S150/3000/60W/23W/80/A100/EM1H | 1482 x 57 x 81 ± 1mm | 3000    | 5750/2450             | 60W/23W             | 96/107                   | 100°                     |
| 2993648 Ennio S150/3000/60W/33W/80/A100/EM1H | 1482 x 57 x 81 ± 1mm | 3000    | 5750/3555             | 60W/33W             | 96/108                   | 100°                     |
| 2993649 Ennio S150/3000/60W/37W/80/A100/EM1H | 1482 x 57 x 81 ± 1mm | 3000    | 5750/3810             | 60W/37W             | 96/103                   | 100°                     |
| 2993650 Ennio S150/3000/60W/50W/80/A100/EM1H | 1482 x 57 x 81 ± 1mm | 3000    | 5750/5000             | 60W/50W             | 96/100                   | 100°                     |
| 2993651 Ennio S150/3000/60W/60W/80/A100/EM1H | 1482 x 57 x 81 ± 1mm | 3000    | 5750/5750             | 60W/60W             | 96/96                    | 100°                     |
| 2993652 Ennio S150/4000/37W/23W/80/A100/EM1H | 1482 x 57 x 81 ± 1mm | 4000    | 3810/2450             | 37W/23W             | 103/107                  | 100°                     |
| 2993653 Ennio S150/4000/37W/33W/80/A100/EM1H | 1482 x 57 x 81 ± 1mm | 4000    | 3810/3555             | 37W/33W             | 103/108                  | 100°                     |
| 2993654 Ennio S150/4000/37W/37W/80/A100/EM1H | 1482 x 57 x 81 ± 1mm | 4000    | 3810/3810             | 37W/37W             | 103/103                  | 100°                     |
| 2993655 Ennio S150/4000/50W/23W/80/A100/EM1H | 1482 x 57 x 81 ± 1mm | 4000    | 5000/2450             | 50W/23W             | 100/107                  | 100°                     |
| 2993656 Ennio S150/4000/50W/33W/80/A100/EM1H | 1482 x 57 x 81 ± 1mm | 4000    | 5000/3555             | 50W/33W             | 100/108                  | 100°                     |
| 2993657 Ennio S150/4000/50W/37W/80/A100/EM1H | 1482 x 57 x 81 ± 1mm | 4000    | 5000/3810             | 50W/37W             | 100/103                  | 100°                     |
| 2993658 Ennio S150/4000/50W/50W/80/A100/EM1H | 1482 x 57 x 81 ± 1mm | 4000    | 5000/5000             | 50W/50W             | 100/100                  | 100°                     |
| 2993659 Ennio S150/4000/60W/23W/80/A100/EM1H | 1482 x 57 x 81 ± 1mm | 4000    | 5750/2450             | 60W/23W             | 96/107                   | 100°                     |
| 2993660 Ennio S150/4000/60W/33W/80/A100/EM1H | 1482 x 57 x 81 ± 1mm | 4000    | 5750/3555             | 60W/33W             | 96/108                   | 100°                     |
| 2993661 Ennio S150/4000/60W/37W/80/A100/EM1H | 1482 x 57 x 81 ± 1mm | 4000    | 5750/3810             | 60W/37W             | 96/103                   | 100°                     |
| 2993662 Ennio S150/4000/60W/50W/80/A100/EM1H | 1482 x 57 x 81 ± 1mm | 4000    | 5750/5000             | 60W/50W             | 96/100                   | 100°                     |
| 2993663 Ennio S150/4000/60W/60W/80/A100/EM1H | 1482 x 57 x 81 ± 1mm | 4000    | 5750/5750             | 60W/60W             | 96/96                    | 100°                     |
| 2993664 Ennio S150/5000/37W/23W/80/A100/EM1H | 1482 x 57 x 81 ± 1mm | 5000    | 3810/2450             | 37W/23W             | 103/107                  | 100°                     |
| 2993665 Ennio S150/5000/37W/33W/80/A100/EM1H | 1482 x 57 x 81 ± 1mm | 5000    | 3810/3555             | 37W/33W             | 103/108                  | 100°                     |
| 2993666 Ennio S150/5000/37W/37W/80/A100/EM1H | 1482 x 57 x 81 ± 1mm | 5000    | 3810/3810             | 37W/37W             | 103/103                  | 100°                     |
| 2993667 Ennio S150/5000/50W/23W/80/A100/EM1H | 1482 x 57 x 81 ± 1mm | 5000    | 5000/2450             | 50W/23W             | 100/107                  | 100°                     |
| 2993668 Ennio S150/5000/50W/33W/80/A100/EM1H | 1482 x 57 x 81 ± 1mm | 5000    | 5000/3555             | 50W/33W             | 100/108                  | 100°                     |
| 2993669 Ennio S150/5000/50W/37W/80/A100/EM1H | 1482 x 57 x 81 ± 1mm | 5000    | 5000/3810             | 50W/37W             | 100/103                  | 100°                     |
| 2993670 Ennio S150/5000/50W/50W/80/A100/EM1H | 1482 x 57 x 81 ± 1mm | 5000    | 5000/5000             | 50W/50W             | 100/100                  | 100°                     |
| 2993671 Ennio S150/5000/60W/23W/80/A100/EM1H | 1482 x 57 x 81 ± 1mm | 5000    | 5750/2450             | 60W/23W             | 96/107                   | 100°                     |
| 2993672 Ennio S150/5000/60W/33W/80/A100/EM1H | 1482 x 57 x 81 ± 1mm | 5000    | 5750/3555             | 60W/33W             | 96/108                   | 100°                     |
| 2993673 Ennio S150/5000/60W/37W/80/A100/EM1H | 1482 x 57 x 81 ± 1mm | 5000    | 5750/3810             | 60W/37W             | 96/103                   | 100°                     |
| 2993674 Ennio S150/5000/60W/50W/80/A100/EM1H | 1482 x 57 x 81 ± 1mm | 5000    | 5750/5000             | 60W/50W             | 96/100                   | 100°                     |
| 2993675 Ennio S150/5000/60W/60W/80/A100/EM1H | 1482 x 57 x 81 ± 1mm | 5000    | 5750/5750             | 60W/60W             | 96/96                    | 100°                     |
| 2993676 Ennio S150/6500/37W/23W/80/A100/EM1H | 1482 x 57 x 81 ± 1mm | 6500    | 3810/2450             | 37W/23W             | 103/107                  | 100°                     |
| 2993677 Ennio S150/6500/37W/33W/80/A100/EM1H | 1482 x 57 x 81 ± 1mm | 6500    | 3810/3555             | 37W/33W             | 103/108                  | 100°                     |
| 2993678 Ennio S150/6500/37W/37W/80/A100/EM1H | 1482 x 57 x 81 ± 1mm | 6500    | 3810/3810             | 37W/37W             | 103/103                  | 100°                     |
| 2993679 Ennio S150/6500/50W/23W/80/A100/EM1H | 1482 x 57 x 81 ± 1mm | 6500    | 5000/2450             | 50W/23W             | 100/107                  | 100°                     |
| 2993680 Ennio S150/6500/50W/33W/80/A100/EM1H | 1482 x 57 x 81 ± 1mm | 6500    | 5000/3555             | 50W/33W             | 100/108                  | 100°                     |
| 2993681 Ennio S150/6500/50W/37W/80/A100/EM1H | 1482 x 57 x 81 ± 1mm | 6500    | 5000/3810             | 50W/37W             | 100/103                  | 100°                     |
| 2993682 Ennio S150/6500/50W/50W/80/A100/EM1H | 1482 x 57 x 81 ± 1mm | 6500    | 5000/5000             | 50W/50W             | 100/100                  | 100°                     |
| 2993683 Ennio S150/6500/60W/23W/80/A100/EM1H | 1482 x 57 x 81 ± 1mm | 6500    | 5750/2450             | 60W/23W             | 96/107                   | 100°                     |
| 2993684 Ennio S150/6500/60W/33W/80/A100/EM1H | 1482 x 57 x 81 ± 1mm | 6500    | 5750/3555             | 60W/33W             | 96/108                   | 100°                     |
| 2993685 Ennio S150/6500/60W/37W/80/A100/EM1H | 1482 x 57 x 81 ± 1mm | 6500    | 5750/3810             | 60W/37W             | 96/103                   | 100°                     |
| 2993686 Ennio S150/6500/60W/50W/80/A100/EM1H | 1482 x 57 x 81 ± 1mm | 6500    | 5750/5000             | 60W/50W             | 96/100                   | 100°                     |
| 2993687 Ennio S150/6500/60W/60W/80/A100/EM1H | 1482 x 57 x 81 ± 1mm | 6500    | 5750/5750             | 60W/60W             | 96/96                    | 100°                     |

SKU SPECIFICATIONS

| Product Code                                   | Dimensions (mm)      | CCT (K) | Lumens (lm) (UP/DOWN) | Power (W) (UP/DOWN) | Eff. (lm/watt) (UP/DOWN) | Lens Angle (°) (UP/DOWN) |
|--|----------------------|---------|-----------------------|---------------------|--------------------------|--------------------------|
| <b>CRI 80</b>                                  |                      |         |                       |                     |                          |                          |
| 2993688 Ennio S240/3000/64W/30W/80/A100/EM1H   | 2323 x 57 x 81 ± 1mm | 3000    | 6380/3060             | 64W/30W             | 100/102                  | 100°                     |
| 2993689 Ennio S240/3000/64W/50W/80/A100/EM1H   | 2323 x 57 x 81 ± 1mm | 3000    | 6380/5360             | 64W/50W             | 100/108                  | 100°                     |
| 2993690 Ennio S240/3000/64W/64W/80/A100/EM1H   | 2323 x 57 x 81 ± 1mm | 3000    | 6380/6380             | 64W/64W             | 100/100                  | 100°                     |
| 2993691 Ennio S240/3000/76W/30W/80/A100/EM1H   | 2323 x 57 x 81 ± 1mm | 3000    | 7620/3060             | 76W/30W             | 101/102                  | 100°                     |
| 2993692 Ennio S240/3000/76W/50W/80/A100/EM1H   | 2323 x 57 x 81 ± 1mm | 3000    | 7620/5360             | 76W/50W             | 101/108                  | 100°                     |
| 2993693 Ennio S240/3000/76W/64W/80/A100/EM1H   | 2323 x 57 x 81 ± 1mm | 3000    | 7620/6380             | 76W/64W             | 101/100                  | 100°                     |
| 2993694 Ennio S240/3000/76W/76W/80/A100/EM1H   | 2323 x 57 x 81 ± 1mm | 3000    | 7620/7620             | 76W/76W             | 101/101                  | 100°                     |
| 2993695 Ennio S240/3000/100W/30W/80/A100/EM1H  | 2323 x 57 x 81 ± 1mm | 3000    | 9240/3060             | 100W/30W            | 93/102                   | 100°                     |
| 2993696 Ennio S240/3000/100W/50W/80/A100/EM1H  | 2323 x 57 x 81 ± 1mm | 3000    | 9240/5360             | 100W/50W            | 93/108                   | 100°                     |
| 2993697 Ennio S240/3000/100W/64W/80/A100/EM1H  | 2323 x 57 x 81 ± 1mm | 3000    | 9240/6380             | 100W/64W            | 93/100                   | 100°                     |
| 2993698 Ennio S240/3000/100W/76W/80/A100/EM1H  | 2323 x 57 x 81 ± 1mm | 3000    | 9240/7620             | 100W/76W            | 93/101                   | 100°                     |
| 2993699 Ennio S240/3000/100W/100W/80/A100/EM1H | 2323 x 57 x 81 ± 1mm | 3000    | 9240/9240             | 100W/100W           | 93/93                    | 100°                     |
| 2993700 Ennio S240/4000/64W/30W/80/A100/EM1H   | 2323 x 57 x 81 ± 1mm | 4000    | 6380/3060             | 64W/30W             | 100/102                  | 100°                     |
| 2993701 Ennio S240/4000/64W/50W/80/A100/EM1H   | 2323 x 57 x 81 ± 1mm | 4000    | 6380/5360             | 64W/50W             | 100/108                  | 100°                     |
| 2993702 Ennio S240/4000/64W/64W/80/A100/EM1H   | 2323 x 57 x 81 ± 1mm | 4000    | 6380/6380             | 64W/64W             | 100/100                  | 100°                     |
| 2993703 Ennio S240/4000/76W/30W/80/A100/EM1H   | 2323 x 57 x 81 ± 1mm | 4000    | 7620/3060             | 76W/30W             | 101/102                  | 100°                     |
| 2993704 Ennio S240/4000/76W/50W/80/A100/EM1H   | 2323 x 57 x 81 ± 1mm | 4000    | 7620/5360             | 76W/50W             | 101/108                  | 100°                     |
| 2993705 Ennio S240/4000/76W/64W/80/A100/EM1H   | 2323 x 57 x 81 ± 1mm | 4000    | 7620/6380             | 76W/64W             | 101/100                  | 100°                     |
| 2993706 Ennio S240/4000/76W/76W/80/A100/EM1H   | 2323 x 57 x 81 ± 1mm | 4000    | 7620/7620             | 76W/76W             | 101/101                  | 100°                     |
| 2993707 Ennio S240/4000/100W/30W/80/A100/EM1H  | 2323 x 57 x 81 ± 1mm | 4000    | 9240/3060             | 100W/30W            | 93/102                   | 100°                     |
| 2993708 Ennio S240/4000/100W/50W/80/A100/EM1H  | 2323 x 57 x 81 ± 1mm | 4000    | 9240/5360             | 100W/50W            | 93/108                   | 100°                     |
| 2993709 Ennio S240/4000/100W/64W/80/A100/EM1H  | 2323 x 57 x 81 ± 1mm | 4000    | 9240/6380             | 100W/64W            | 93/100                   | 100°                     |
| 2993710 Ennio S240/4000/100W/76W/80/A100/EM1H  | 2323 x 57 x 81 ± 1mm | 4000    | 9240/7620             | 100W/76W            | 93/101                   | 100°                     |
| 2993711 Ennio S240/4000/100W/100W/80/A100/EM1H | 2323 x 57 x 81 ± 1mm | 4000    | 9240/9240             | 100W/100W           | 93/93                    | 100°                     |
| 2993712 Ennio S240/5000/64W/30W/80/A100/EM1H   | 2323 x 57 x 81 ± 1mm | 5000    | 6380/3060             | 64W/30W             | 100/102                  | 100°                     |
| 2993713 Ennio S240/5000/64W/50W/80/A100/EM1H   | 2323 x 57 x 81 ± 1mm | 5000    | 6380/5360             | 64W/50W             | 100/108                  | 100°                     |
| 2993714 Ennio S240/5000/64W/64W/80/A100/EM1H   | 2323 x 57 x 81 ± 1mm | 5000    | 6380/6380             | 64W/64W             | 100/100                  | 100°                     |
| 2993715 Ennio S240/5000/76W/30W/80/A100/EM1H   | 2323 x 57 x 81 ± 1mm | 5000    | 7620/3060             | 76W/30W             | 101/102                  | 100°                     |
| 2993716 Ennio S240/5000/76W/50W/80/A100/EM1H   | 2323 x 57 x 81 ± 1mm | 5000    | 7620/5360             | 76W/50W             | 101/108                  | 100°                     |
| 2993717 Ennio S240/5000/76W/64W/80/A100/EM1H   | 2323 x 57 x 81 ± 1mm | 5000    | 7620/6380             | 76W/64W             | 101/100                  | 100°                     |
| 2993718 Ennio S240/5000/76W/76W/80/A100/EM1H   | 2323 x 57 x 81 ± 1mm | 5000    | 7620/7620             | 76W/76W             | 101/101                  | 100°                     |
| 2993719 Ennio S240/5000/100W/30W/80/A100/EM1H  | 2323 x 57 x 81 ± 1mm | 5000    | 9240/3060             | 100W/30W            | 93/102                   | 100°                     |
| 2993720 Ennio S240/5000/100W/50W/80/A100/EM1H  | 2323 x 57 x 81 ± 1mm | 5000    | 9240/5360             | 100W/50W            | 93/108                   | 100°                     |
| 2993721 Ennio S240/5000/100W/64W/80/A100/EM1H  | 2323 x 57 x 81 ± 1mm | 5000    | 9240/6380             | 100W/64W            | 93/100                   | 100°                     |
| 2993722 Ennio S240/5000/100W/76W/80/A100/EM1H  | 2323 x 57 x 81 ± 1mm | 5000    | 9240/7620             | 100W/76W            | 93/101                   | 100°                     |
| 2993723 Ennio S240/5000/100W/100W/80/A100/EM1H | 2323 x 57 x 81 ± 1mm | 5000    | 9240/9240             | 100W/100W           | 93/93                    | 100°                     |
| 2993724 Ennio S240/6500/64W/30W/80/A100/EM1H   | 2323 x 57 x 81 ± 1mm | 6500    | 6380/3060             | 64W/30W             | 100/102                  | 100°                     |
| 2993725 Ennio S240/6500/64W/50W/80/A100/EM1H   | 2323 x 57 x 81 ± 1mm | 6500    | 6380/5360             | 64W/50W             | 100/108                  | 100°                     |
| 2993726 Ennio S240/6500/64W/64W/80/A100/EM1H   | 2323 x 57 x 81 ± 1mm | 6500    | 6380/6380             | 64W/64W             | 100/100                  | 100°                     |
| 2993727 Ennio S240/6500/76W/30W/80/A100/EM1H   | 2323 x 57 x 81 ± 1mm | 6500    | 7620/3060             | 76W/30W             | 101/102                  | 100°                     |
| 2993728 Ennio S240/6500/76W/50W/80/A100/EM1H   | 2323 x 57 x 81 ± 1mm | 6500    | 7620/5360             | 76W/50W             | 101/108                  | 100°                     |
| 2993729 Ennio S240/6500/76W/64W/80/A100/EM1H   | 2323 x 57 x 81 ± 1mm | 6500    | 7620/6380             | 76W/64W             | 101/100                  | 100°                     |
| 2993730 Ennio S240/6500/76W/76W/80/A100/EM1H   | 2323 x 57 x 81 ± 1mm | 6500    | 7620/7620             | 76W/76W             | 101/101                  | 100°                     |
| 2993731 Ennio S240/6500/100W/30W/80/A100/EM1H  | 2323 x 57 x 81 ± 1mm | 6500    | 9240/3060             | 100W/30W            | 93/102                   | 100°                     |
| 2993732 Ennio S240/6500/100W/50W/80/A100/EM1H  | 2323 x 57 x 81 ± 1mm | 6500    | 9240/5360             | 100W/50W            | 93/108                   | 100°                     |
| 2993733 Ennio S240/6500/100W/64W/80/A100/EM1H  | 2323 x 57 x 81 ± 1mm | 6500    | 9240/6380             | 100W/64W            | 93/100                   | 100°                     |
| 2993734 Ennio S240/6500/100W/76W/80/A100/EM1H  | 2323 x 57 x 81 ± 1mm | 6500    | 9240/7620             | 100W/76W            | 93/101                   | 100°                     |
| 2993735 Ennio S240/6500/100W/100W/80/A100/EM1H | 2323 x 57 x 81 ± 1mm | 6500    | 9240/9240             | 100W/100W           | 93/93                    | 100°                     |

## SKU SPECIFICATIONS

| Product Code                                   | Dimensions (mm)      | CCT (K) | Lumens (lm) (UP/DOWN) | Power (W) (UP/DOWN) | Eff. (lm/watt) (UP/DOWN) | Lens Angle (°) (UP/DOWN) |
|--|----------------------|---------|-----------------------|---------------------|--------------------------|--------------------------|
| <b>CRI 80</b>                                  |                      |         |                       |                     |                          |                          |
| 2993736 Ennio S300/3000/74W/46W/80/A100/EM1H   | 2885 x 57 x 81 ± 1mm | 3000    | 7620/4900             | 74W/46W             | 103/107                  | 100°                     |
| 2993737 Ennio S300/3000/74W/66W/80/A100/EM1H   | 2885 x 57 x 81 ± 1mm | 3000    | 7620/7110             | 74W/66W             | 103/108                  | 100°                     |
| 2993738 Ennio S300/3000/74W/74W/80/A100/EM1H   | 2885 x 57 x 81 ± 1mm | 3000    | 7620/7620             | 74W/74W             | 103/103                  | 100°                     |
| 2993739 Ennio S300/3000/100W/46W/80/A100/EM1H  | 2885 x 57 x 81 ± 1mm | 3000    | 10000/4900            | 100W/46W            | 100/107                  | 100°                     |
| 2993740 Ennio S300/3000/100W/66W/80/A100/EM1H  | 2885 x 57 x 81 ± 1mm | 3000    | 10000/7110            | 100W/66W            | 100/108                  | 100°                     |
| 2993741 Ennio S300/3000/100W/74W/80/A100/EM1H  | 2885 x 57 x 81 ± 1mm | 3000    | 10000/7620            | 100W/74W            | 100/103                  | 100°                     |
| 2993742 Ennio S300/3000/100W/100W/80/A100/EM1H | 2885 x 57 x 81 ± 1mm | 3000    | 10000/10000           | 100W/100W           | 100/100                  | 100°                     |
| 2993743 Ennio S300/3000/120W/46W/80/A100/EM1H  | 2885 x 57 x 81 ± 1mm | 3000    | 11500/4900            | 120W/46W            | 96/107                   | 100°                     |
| 2993744 Ennio S300/3000/120W/66W/80/A100/EM1H  | 2885 x 57 x 81 ± 1mm | 3000    | 11500/7110            | 120W/66W            | 96/108                   | 100°                     |
| 2993745 Ennio S300/3000/120W/74W/80/A100/EM1H  | 2885 x 57 x 81 ± 1mm | 3000    | 11500/7620            | 120W/74W            | 96/103                   | 100°                     |
| 2993746 Ennio S300/3000/120W/100W/80/A100/EM1H | 2885 x 57 x 81 ± 1mm | 3000    | 11500/10000           | 120W/100W           | 96/100                   | 100°                     |
| 2993747 Ennio S300/3000/120W/120W/80/A100/EM1H | 2885 x 57 x 81 ± 1mm | 3000    | 11500/11500           | 120W/120W           | 96/96                    | 100°                     |
| 2993748 Ennio S300/4000/74W/46W/80/A100/EM1H   | 2885 x 57 x 81 ± 1mm | 4000    | 7620/4900             | 74W/46W             | 103/107                  | 100°                     |
| 2993749 Ennio S300/4000/74W/66W/80/A100/EM1H   | 2885 x 57 x 81 ± 1mm | 4000    | 7620/7110             | 74W/66W             | 103/108                  | 100°                     |
| 2993750 Ennio S300/4000/74W/74W/80/A100/EM1H   | 2885 x 57 x 81 ± 1mm | 4000    | 7620/7620             | 74W/74W             | 103/103                  | 100°                     |
| 2993751 Ennio S300/4000/100W/46W/80/A100/EM1H  | 2885 x 57 x 81 ± 1mm | 4000    | 10000/4900            | 100W/46W            | 100/107                  | 100°                     |
| 2993752 Ennio S300/4000/100W/66W/80/A100/EM1H  | 2885 x 57 x 81 ± 1mm | 4000    | 10000/7110            | 100W/66W            | 100/108                  | 100°                     |
| 2993753 Ennio S300/4000/100W/74W/80/A100/EM1H  | 2885 x 57 x 81 ± 1mm | 4000    | 10000/7620            | 100W/74W            | 100/103                  | 100°                     |
| 2993754 Ennio S300/4000/100W/100W/80/A100/EM1H | 2885 x 57 x 81 ± 1mm | 4000    | 10000/10000           | 100W/100W           | 100/100                  | 100°                     |
| 2993755 Ennio S300/4000/120W/46W/80/A100/EM1H  | 2885 x 57 x 81 ± 1mm | 4000    | 11500/4900            | 120W/46W            | 96/107                   | 100°                     |
| 2993756 Ennio S300/4000/120W/66W/80/A100/EM1H  | 2885 x 57 x 81 ± 1mm | 4000    | 11500/7110            | 120W/66W            | 96/108                   | 100°                     |
| 2993757 Ennio S300/4000/120W/74W/80/A100/EM1H  | 2885 x 57 x 81 ± 1mm | 4000    | 11500/7620            | 120W/74W            | 96/103                   | 100°                     |
| 2993758 Ennio S300/4000/120W/100W/80/A100/EM1H | 2885 x 57 x 81 ± 1mm | 4000    | 11500/10000           | 120W/100W           | 96/100                   | 100°                     |
| 2993759 Ennio S300/4000/120W/120W/80/A100/EM1H | 2885 x 57 x 81 ± 1mm | 4000    | 11500/11500           | 120W/120W           | 96/96                    | 100°                     |
| 2993760 Ennio S300/5000/74W/46W/80/A100/EM1H   | 2885 x 57 x 81 ± 1mm | 5000    | 7620/4900             | 74W/46W             | 103/107                  | 100°                     |
| 2993761 Ennio S300/5000/74W/66W/80/A100/EM1H   | 2885 x 57 x 81 ± 1mm | 5000    | 7620/7110             | 74W/66W             | 103/108                  | 100°                     |
| 2993762 Ennio S300/5000/74W/74W/80/A100/EM1H   | 2885 x 57 x 81 ± 1mm | 5000    | 7620/7620             | 74W/74W             | 103/103                  | 100°                     |
| 2993763 Ennio S300/5000/100W/46W/80/A100/EM1H  | 2885 x 57 x 81 ± 1mm | 5000    | 10000/4900            | 100W/46W            | 100/107                  | 100°                     |
| 2993764 Ennio S300/5000/100W/66W/80/A100/EM1H  | 2885 x 57 x 81 ± 1mm | 5000    | 10000/7110            | 100W/66W            | 100/108                  | 100°                     |
| 2993765 Ennio S300/5000/100W/74W/80/A100/EM1H  | 2885 x 57 x 81 ± 1mm | 5000    | 10000/7620            | 100W/74W            | 100/103                  | 100°                     |
| 2993766 Ennio S300/5000/100W/100W/80/A100/EM1H | 2885 x 57 x 81 ± 1mm | 5000    | 10000/10000           | 100W/100W           | 100/100                  | 100°                     |
| 2993767 Ennio S300/5000/120W/46W/80/A100/EM1H  | 2885 x 57 x 81 ± 1mm | 5000    | 11500/4900            | 120W/46W            | 96/107                   | 100°                     |
| 2993768 Ennio S300/5000/120W/66W/80/A100/EM1H  | 2885 x 57 x 81 ± 1mm | 5000    | 11500/7110            | 120W/66W            | 96/108                   | 100°                     |
| 2993769 Ennio S300/5000/120W/74W/80/A100/EM1H  | 2885 x 57 x 81 ± 1mm | 5000    | 11500/7620            | 120W/74W            | 96/103                   | 100°                     |
| 2993770 Ennio S300/5000/120W/100W/80/A100/EM1H | 2885 x 57 x 81 ± 1mm | 5000    | 11500/10000           | 120W/100W           | 96/100                   | 100°                     |
| 2993771 Ennio S300/5000/120W/120W/80/A100/EM1H | 2885 x 57 x 81 ± 1mm | 5000    | 11500/11500           | 120W/120W           | 96/96                    | 100°                     |
| 2993772 Ennio S300/6500/74W/46W/80/A100/EM1H   | 2885 x 57 x 81 ± 1mm | 6500    | 7620/4900             | 74W/46W             | 103/107                  | 100°                     |
| 2993773 Ennio S300/6500/74W/66W/80/A100/EM1H   | 2885 x 57 x 81 ± 1mm | 6500    | 7620/7110             | 74W/66W             | 103/108                  | 100°                     |
| 2993774 Ennio S300/6500/74W/74W/80/A100/EM1H   | 2885 x 57 x 81 ± 1mm | 6500    | 7620/7620             | 74W/74W             | 103/103                  | 100°                     |
| 2993775 Ennio S300/6500/100W/46W/80/A100/EM1H  | 2885 x 57 x 81 ± 1mm | 6500    | 10000/4900            | 100W/46W            | 100/107                  | 100°                     |
| 2993776 Ennio S300/6500/100W/66W/80/A100/EM1H  | 2885 x 57 x 81 ± 1mm | 6500    | 10000/7110            | 100W/66W            | 100/108                  | 100°                     |
| 2993777 Ennio S300/6500/100W/74W/80/A100/EM1H  | 2885 x 57 x 81 ± 1mm | 6500    | 10000/7620            | 100W/74W            | 100/103                  | 100°                     |
| 2993778 Ennio S300/6500/100W/100W/80/A100/EM1H | 2885 x 57 x 81 ± 1mm | 6500    | 10000/10000           | 100W/100W           | 100/100                  | 100°                     |
| 2993779 Ennio S300/6500/120W/46W/80/A100/EM1H  | 2885 x 57 x 81 ± 1mm | 6500    | 11500/4900            | 120W/46W            | 96/107                   | 100°                     |
| 2993780 Ennio S300/6500/120W/66W/80/A100/EM1H  | 2885 x 57 x 81 ± 1mm | 6500    | 11500/7110            | 120W/66W            | 96/108                   | 100°                     |
| 2993781 Ennio S300/6500/120W/74W/80/A100/EM1H  | 2885 x 57 x 81 ± 1mm | 6500    | 11500/7620            | 120W/74W            | 96/103                   | 100°                     |
| 2993782 Ennio S300/6500/120W/100W/80/A100/EM1H | 2885 x 57 x 81 ± 1mm | 6500    | 11500/10000           | 120W/100W           | 96/100                   | 100°                     |
| 2993783 Ennio S300/6500/120W/120W/80/A100/EM1H | 2885 x 57 x 81 ± 1mm | 6500    | 11500/11500           | 120W/120W           | 96/96                    | 100°                     |

## SKU SPECIFICATIONS

| Product Code                                 | Dimensions (mm)      | CCT (K) | Lumens (lm) (UP/DOWN) | Power (W) (UP/DOWN) | Eff. (lm/watt) (UP/DOWN) | Lens Angle (°) (UP/DOWN) |
|--|----------------------|---------|-----------------------|---------------------|--------------------------|--------------------------|
| <b>CRI 80</b>                                |                      |         |                       |                     |                          |                          |
| 2993784 Ennio S120/3000/32W/15W/80/A100/EM3H | 1201 x 57 x 81 ± 1mm | 3000    | 3190/1530             | 32W/15W             | 100/102                  | 100°                     |
| 2993785 Ennio S120/3000/32W/25W/80/A100/EM3H | 1201 x 57 x 81 ± 1mm | 3000    | 3190/2680             | 32W/25W             | 100/108                  | 100°                     |
| 2993786 Ennio S120/3000/32W/32W/80/A100/EM3H | 1201 x 57 x 81 ± 1mm | 3000    | 3190/3190             | 32W/32W             | 100/100                  | 100°                     |
| 2993787 Ennio S120/3000/38W/15W/80/A100/EM3H | 1201 x 57 x 81 ± 1mm | 3000    | 3810/1530             | 38W/15W             | 101/102                  | 100°                     |
| 2993788 Ennio S120/3000/38W/25W/80/A100/EM3H | 1201 x 57 x 81 ± 1mm | 3000    | 3810/2680             | 38W/25W             | 101/108                  | 100°                     |
| 2993789 Ennio S120/3000/38W/32W/80/A100/EM3H | 1201 x 57 x 81 ± 1mm | 3000    | 3810/3190             | 38W/32W             | 101/100                  | 100°                     |
| 2993790 Ennio S120/3000/38W/38W/80/A100/EM3H | 1201 x 57 x 81 ± 1mm | 3000    | 3810/3810             | 38W/38W             | 101/101                  | 100°                     |
| 2993791 Ennio S120/3000/50W/15W/80/A100/EM3H | 1201 x 57 x 81 ± 1mm | 3000    | 4620/1530             | 50W/15W             | 93/102                   | 100°                     |
| 2993792 Ennio S120/3000/50W/25W/80/A100/EM3H | 1201 x 57 x 81 ± 1mm | 3000    | 4620/2680             | 50W/25W             | 93/108                   | 100°                     |
| 2993793 Ennio S120/3000/50W/32W/80/A100/EM3H | 1201 x 57 x 81 ± 1mm | 3000    | 4620/3190             | 50W/32W             | 93/100                   | 100°                     |
| 2993794 Ennio S120/3000/50W/38W/80/A100/EM3H | 1201 x 57 x 81 ± 1mm | 3000    | 4620/3810             | 50W/38W             | 93/101                   | 100°                     |
| 2993795 Ennio S120/3000/50W/50W/80/A100/EM3H | 1201 x 57 x 81 ± 1mm | 3000    | 4620/4620             | 50W/50W             | 93/93                    | 100°                     |
| 2993796 Ennio S120/4000/32W/15W/80/A100/EM3H | 1201 x 57 x 81 ± 1mm | 4000    | 3190/1530             | 32W/15W             | 100/102                  | 100°                     |
| 2993797 Ennio S120/4000/32W/25W/80/A100/EM3H | 1201 x 57 x 81 ± 1mm | 4000    | 3190/2680             | 32W/25W             | 100/108                  | 100°                     |
| 2993798 Ennio S120/4000/32W/32W/80/A100/EM3H | 1201 x 57 x 81 ± 1mm | 4000    | 3190/3190             | 32W/32W             | 100/100                  | 100°                     |
| 2993799 Ennio S120/4000/38W/15W/80/A100/EM3H | 1201 x 57 x 81 ± 1mm | 4000    | 3810/1530             | 38W/15W             | 101/102                  | 100°                     |
| 2993800 Ennio S120/4000/38W/25W/80/A100/EM3H | 1201 x 57 x 81 ± 1mm | 4000    | 3810/2680             | 38W/25W             | 101/108                  | 100°                     |
| 2993801 Ennio S120/4000/38W/32W/80/A100/EM3H | 1201 x 57 x 81 ± 1mm | 4000    | 3810/3190             | 38W/32W             | 101/100                  | 100°                     |
| 2993802 Ennio S120/4000/38W/38W/80/A100/EM3H | 1201 x 57 x 81 ± 1mm | 4000    | 3810/3810             | 38W/38W             | 101/101                  | 100°                     |
| 2993803 Ennio S120/4000/50W/15W/80/A100/EM3H | 1201 x 57 x 81 ± 1mm | 4000    | 4620/1530             | 50W/15W             | 93/102                   | 100°                     |
| 2993804 Ennio S120/4000/50W/25W/80/A100/EM3H | 1201 x 57 x 81 ± 1mm | 4000    | 4620/2680             | 50W/25W             | 93/108                   | 100°                     |
| 2993805 Ennio S120/4000/50W/32W/80/A100/EM3H | 1201 x 57 x 81 ± 1mm | 4000    | 4620/3190             | 50W/32W             | 93/100                   | 100°                     |
| 2993806 Ennio S120/4000/50W/38W/80/A100/EM3H | 1201 x 57 x 81 ± 1mm | 4000    | 4620/3810             | 50W/38W             | 93/101                   | 100°                     |
| 2993807 Ennio S120/4000/50W/50W/80/A100/EM3H | 1201 x 57 x 81 ± 1mm | 4000    | 4620/4620             | 50W/50W             | 93/93                    | 100°                     |
| 2993808 Ennio S120/5000/32W/15W/80/A100/EM3H | 1201 x 57 x 81 ± 1mm | 5000    | 3190/1530             | 32W/15W             | 100/102                  | 100°                     |
| 2993809 Ennio S120/5000/32W/25W/80/A100/EM3H | 1201 x 57 x 81 ± 1mm | 5000    | 3190/2680             | 32W/25W             | 100/108                  | 100°                     |
| 2993810 Ennio S120/5000/32W/32W/80/A100/EM3H | 1201 x 57 x 81 ± 1mm | 5000    | 3190/3190             | 32W/32W             | 100/100                  | 100°                     |
| 2993811 Ennio S120/5000/38W/15W/80/A100/EM3H | 1201 x 57 x 81 ± 1mm | 5000    | 3810/1530             | 38W/15W             | 101/102                  | 100°                     |
| 2993812 Ennio S120/5000/38W/25W/80/A100/EM3H | 1201 x 57 x 81 ± 1mm | 5000    | 3810/2680             | 38W/25W             | 101/108                  | 100°                     |
| 2993813 Ennio S120/5000/38W/32W/80/A100/EM3H | 1201 x 57 x 81 ± 1mm | 5000    | 3810/3190             | 38W/32W             | 101/100                  | 100°                     |
| 2993814 Ennio S120/5000/38W/38W/80/A100/EM3H | 1201 x 57 x 81 ± 1mm | 5000    | 3810/3810             | 38W/38W             | 101/101                  | 100°                     |
| 2993815 Ennio S120/5000/50W/15W/80/A100/EM3H | 1201 x 57 x 81 ± 1mm | 5000    | 4620/1530             | 50W/15W             | 93/102                   | 100°                     |
| 2993816 Ennio S120/5000/50W/25W/80/A100/EM3H | 1201 x 57 x 81 ± 1mm | 5000    | 4620/2680             | 50W/25W             | 93/108                   | 100°                     |
| 2993817 Ennio S120/5000/50W/32W/80/A100/EM3H | 1201 x 57 x 81 ± 1mm | 5000    | 4620/3190             | 50W/32W             | 93/100                   | 100°                     |
| 2993818 Ennio S120/5000/50W/38W/80/A100/EM3H | 1201 x 57 x 81 ± 1mm | 5000    | 4620/3810             | 50W/38W             | 93/101                   | 100°                     |
| 2993819 Ennio S120/5000/50W/50W/80/A100/EM3H | 1201 x 57 x 81 ± 1mm | 5000    | 4620/4620             | 50W/50W             | 93/93                    | 100°                     |
| 2993820 Ennio S120/6500/32W/15W/80/A100/EM3H | 1201 x 57 x 81 ± 1mm | 6500    | 3190/1530             | 32W/15W             | 100/102                  | 100°                     |
| 2993821 Ennio S120/6500/32W/25W/80/A100/EM3H | 1201 x 57 x 81 ± 1mm | 6500    | 3190/2680             | 32W/25W             | 100/108                  | 100°                     |
| 2993822 Ennio S120/6500/32W/32W/80/A100/EM3H | 1201 x 57 x 81 ± 1mm | 6500    | 3190/3190             | 32W/32W             | 100/100                  | 100°                     |
| 2993823 Ennio S120/6500/38W/15W/80/A100/EM3H | 1201 x 57 x 81 ± 1mm | 6500    | 3810/1530             | 38W/15W             | 101/102                  | 100°                     |
| 2993824 Ennio S120/6500/38W/25W/80/A100/EM3H | 1201 x 57 x 81 ± 1mm | 6500    | 3810/2680             | 38W/25W             | 101/108                  | 100°                     |
| 2993825 Ennio S120/6500/38W/32W/80/A100/EM3H | 1201 x 57 x 81 ± 1mm | 6500    | 3810/3190             | 38W/32W             | 101/100                  | 100°                     |
| 2993826 Ennio S120/6500/38W/38W/80/A100/EM3H | 1201 x 57 x 81 ± 1mm | 6500    | 3810/3810             | 38W/38W             | 101/101                  | 100°                     |
| 2993827 Ennio S120/6500/50W/15W/80/A100/EM3H | 1201 x 57 x 81 ± 1mm | 6500    | 4620/1530             | 50W/15W             | 93/102                   | 100°                     |
| 2993828 Ennio S120/6500/50W/25W/80/A100/EM3H | 1201 x 57 x 81 ± 1mm | 6500    | 4620/2680             | 50W/25W             | 93/108                   | 100°                     |
| 2993829 Ennio S120/6500/50W/32W/80/A100/EM3H | 1201 x 57 x 81 ± 1mm | 6500    | 4620/3190             | 50W/32W             | 93/100                   | 100°                     |
| 2993830 Ennio S120/6500/50W/38W/80/A100/EM3H | 1201 x 57 x 81 ± 1mm | 6500    | 4620/3810             | 50W/38W             | 93/101                   | 100°                     |
| 2993831 Ennio S120/6500/50W/50W/80/A100/EM3H | 1201 x 57 x 81 ± 1mm | 6500    | 4620/4620             | 50W/50W             | 93/93                    | 100°                     |



## SKU SPECIFICATIONS

| Product Code                                 | Dimensions (mm)      | CCT (K) | Lumens (lm) (UP/DOWN) | Power (W) (UP/DOWN) | Eff. (lm/watt) (UP/DOWN) | Lens Angle (°) (UP/DOWN) |
|--|----------------------|---------|-----------------------|---------------------|--------------------------|--------------------------|
| <b>CRI 80</b>                                |                      |         |                       |                     |                          |                          |
| 2993832 Ennio S150/3000/37W/23W/80/A100/EM3H | 1482 x 57 x 81 ± 1mm | 3000    | 3810/2450             | 37W/23W             | 103/107                  | 100°                     |
| 2993833 Ennio S150/3000/37W/33W/80/A100/EM3H | 1482 x 57 x 81 ± 1mm | 3000    | 3810/3555             | 37W/33W             | 103/108                  | 100°                     |
| 2993834 Ennio S150/3000/37W/37W/80/A100/EM3H | 1482 x 57 x 81 ± 1mm | 3000    | 3810/3810             | 37W/37W             | 103/103                  | 100°                     |
| 2993835 Ennio S150/3000/50W/23W/80/A100/EM3H | 1482 x 57 x 81 ± 1mm | 3000    | 5000/2450             | 50W/23W             | 100/107                  | 100°                     |
| 2993836 Ennio S150/3000/50W/33W/80/A100/EM3H | 1482 x 57 x 81 ± 1mm | 3000    | 5000/3555             | 50W/33W             | 100/108                  | 100°                     |
| 2993837 Ennio S150/3000/50W/37W/80/A100/EM3H | 1482 x 57 x 81 ± 1mm | 3000    | 5000/3810             | 50W/37W             | 100/103                  | 100°                     |
| 2993838 Ennio S150/3000/50W/50W/80/A100/EM3H | 1482 x 57 x 81 ± 1mm | 3000    | 5000/5000             | 50W/50W             | 100/100                  | 100°                     |
| 2993839 Ennio S150/3000/60W/23W/80/A100/EM3H | 1482 x 57 x 81 ± 1mm | 3000    | 5750/2450             | 60W/23W             | 96/107                   | 100°                     |
| 2993840 Ennio S150/3000/60W/33W/80/A100/EM3H | 1482 x 57 x 81 ± 1mm | 3000    | 5750/3555             | 60W/33W             | 96/108                   | 100°                     |
| 2993841 Ennio S150/3000/60W/37W/80/A100/EM3H | 1482 x 57 x 81 ± 1mm | 3000    | 5750/3810             | 60W/37W             | 96/103                   | 100°                     |
| 2993842 Ennio S150/3000/60W/50W/80/A100/EM3H | 1482 x 57 x 81 ± 1mm | 3000    | 5750/5000             | 60W/50W             | 96/100                   | 100°                     |
| 2993843 Ennio S150/3000/60W/60W/80/A100/EM3H | 1482 x 57 x 81 ± 1mm | 3000    | 5750/5750             | 60W/60W             | 96/96                    | 100°                     |
| 2993844 Ennio S150/4000/37W/23W/80/A100/EM3H | 1482 x 57 x 81 ± 1mm | 4000    | 3810/2450             | 37W/23W             | 103/107                  | 100°                     |
| 2993845 Ennio S150/4000/37W/33W/80/A100/EM3H | 1482 x 57 x 81 ± 1mm | 4000    | 3810/3555             | 37W/33W             | 103/108                  | 100°                     |
| 2993846 Ennio S150/4000/37W/37W/80/A100/EM3H | 1482 x 57 x 81 ± 1mm | 4000    | 3810/3810             | 37W/37W             | 103/103                  | 100°                     |
| 2993847 Ennio S150/4000/50W/23W/80/A100/EM3H | 1482 x 57 x 81 ± 1mm | 4000    | 5000/2450             | 50W/23W             | 100/107                  | 100°                     |
| 2993848 Ennio S150/4000/50W/33W/80/A100/EM3H | 1482 x 57 x 81 ± 1mm | 4000    | 5000/3555             | 50W/33W             | 100/108                  | 100°                     |
| 2993849 Ennio S150/4000/50W/37W/80/A100/EM3H | 1482 x 57 x 81 ± 1mm | 4000    | 5000/3810             | 50W/37W             | 100/103                  | 100°                     |
| 2993850 Ennio S150/4000/50W/50W/80/A100/EM3H | 1482 x 57 x 81 ± 1mm | 4000    | 5000/5000             | 50W/50W             | 100/100                  | 100°                     |
| 2993851 Ennio S150/4000/60W/23W/80/A100/EM3H | 1482 x 57 x 81 ± 1mm | 4000    | 5750/2450             | 60W/23W             | 96/107                   | 100°                     |
| 2993852 Ennio S150/4000/60W/33W/80/A100/EM3H | 1482 x 57 x 81 ± 1mm | 4000    | 5750/3555             | 60W/33W             | 96/108                   | 100°                     |
| 2993853 Ennio S150/4000/60W/37W/80/A100/EM3H | 1482 x 57 x 81 ± 1mm | 4000    | 5750/3810             | 60W/37W             | 96/103                   | 100°                     |
| 2993854 Ennio S150/4000/60W/50W/80/A100/EM3H | 1482 x 57 x 81 ± 1mm | 4000    | 5750/5000             | 60W/50W             | 96/100                   | 100°                     |
| 2993855 Ennio S150/4000/60W/60W/80/A100/EM3H | 1482 x 57 x 81 ± 1mm | 4000    | 5750/5750             | 60W/60W             | 96/96                    | 100°                     |
| 2993856 Ennio S150/5000/37W/23W/80/A100/EM3H | 1482 x 57 x 81 ± 1mm | 5000    | 3810/2450             | 37W/23W             | 103/107                  | 100°                     |
| 2993857 Ennio S150/5000/37W/33W/80/A100/EM3H | 1482 x 57 x 81 ± 1mm | 5000    | 3810/3555             | 37W/33W             | 103/108                  | 100°                     |
| 2993858 Ennio S150/5000/37W/37W/80/A100/EM3H | 1482 x 57 x 81 ± 1mm | 5000    | 3810/3810             | 37W/37W             | 103/103                  | 100°                     |
| 2993859 Ennio S150/5000/50W/23W/80/A100/EM3H | 1482 x 57 x 81 ± 1mm | 5000    | 5000/2450             | 50W/23W             | 100/107                  | 100°                     |
| 2993860 Ennio S150/5000/50W/33W/80/A100/EM3H | 1482 x 57 x 81 ± 1mm | 5000    | 5000/3555             | 50W/33W             | 100/108                  | 100°                     |
| 2993861 Ennio S150/5000/50W/37W/80/A100/EM3H | 1482 x 57 x 81 ± 1mm | 5000    | 5000/3810             | 50W/37W             | 100/103                  | 100°                     |
| 2993862 Ennio S150/5000/50W/50W/80/A100/EM3H | 1482 x 57 x 81 ± 1mm | 5000    | 5000/5000             | 50W/50W             | 100/100                  | 100°                     |
| 2993863 Ennio S150/5000/60W/23W/80/A100/EM3H | 1482 x 57 x 81 ± 1mm | 5000    | 5750/2450             | 60W/23W             | 96/107                   | 100°                     |
| 2993864 Ennio S150/5000/60W/33W/80/A100/EM3H | 1482 x 57 x 81 ± 1mm | 5000    | 5750/3555             | 60W/33W             | 96/108                   | 100°                     |
| 2993865 Ennio S150/5000/60W/37W/80/A100/EM3H | 1482 x 57 x 81 ± 1mm | 5000    | 5750/3810             | 60W/37W             | 96/103                   | 100°                     |
| 2993866 Ennio S150/5000/60W/50W/80/A100/EM3H | 1482 x 57 x 81 ± 1mm | 5000    | 5750/5000             | 60W/50W             | 96/100                   | 100°                     |
| 2993867 Ennio S150/5000/60W/60W/80/A100/EM3H | 1482 x 57 x 81 ± 1mm | 5000    | 5750/5750             | 60W/60W             | 96/96                    | 100°                     |
| 2993868 Ennio S150/6500/37W/23W/80/A100/EM3H | 1482 x 57 x 81 ± 1mm | 6500    | 3810/2450             | 37W/23W             | 103/107                  | 100°                     |
| 2993869 Ennio S150/6500/37W/33W/80/A100/EM3H | 1482 x 57 x 81 ± 1mm | 6500    | 3810/3555             | 37W/33W             | 103/108                  | 100°                     |
| 2993870 Ennio S150/6500/37W/37W/80/A100/EM3H | 1482 x 57 x 81 ± 1mm | 6500    | 3810/3810             | 37W/37W             | 103/103                  | 100°                     |
| 2993871 Ennio S150/6500/50W/23W/80/A100/EM3H | 1482 x 57 x 81 ± 1mm | 6500    | 5000/2450             | 50W/23W             | 100/107                  | 100°                     |
| 2993872 Ennio S150/6500/50W/33W/80/A100/EM3H | 1482 x 57 x 81 ± 1mm | 6500    | 5000/3555             | 50W/33W             | 100/108                  | 100°                     |
| 2993873 Ennio S150/6500/50W/37W/80/A100/EM3H | 1482 x 57 x 81 ± 1mm | 6500    | 5000/3810             | 50W/37W             | 100/103                  | 100°                     |
| 2993874 Ennio S150/6500/50W/50W/80/A100/EM3H | 1482 x 57 x 81 ± 1mm | 6500    | 5000/5000             | 50W/50W             | 100/100                  | 100°                     |
| 2993875 Ennio S150/6500/60W/23W/80/A100/EM3H | 1482 x 57 x 81 ± 1mm | 6500    | 5750/2450             | 60W/23W             | 96/107                   | 100°                     |
| 2993876 Ennio S150/6500/60W/33W/80/A100/EM3H | 1482 x 57 x 81 ± 1mm | 6500    | 5750/3555             | 60W/33W             | 96/108                   | 100°                     |
| 2993877 Ennio S150/6500/60W/37W/80/A100/EM3H | 1482 x 57 x 81 ± 1mm | 6500    | 5750/3810             | 60W/37W             | 96/103                   | 100°                     |
| 2993878 Ennio S150/6500/60W/50W/80/A100/EM3H | 1482 x 57 x 81 ± 1mm | 6500    | 5750/5000             | 60W/50W             | 96/100                   | 100°                     |
| 2993879 Ennio S150/6500/60W/60W/80/A100/EM3H | 1482 x 57 x 81 ± 1mm | 6500    | 5750/5750             | 60W/60W             | 96/96                    | 100°                     |

## SKU SPECIFICATIONS

| Product Code                                   | Dimensions (mm)      | CCT (K) | Lumens (lm) (UP/DOWN) | Power (W) (UP/DOWN) | Eff. (lm/watt) (UP/DOWN) | Lens Angle (°) (UP/DOWN) |
|--|----------------------|---------|-----------------------|---------------------|--------------------------|--------------------------|
| <b>CRI 80</b>                                  |                      |         |                       |                     |                          |                          |
| 2993880 Ennio S240/3000/64W/30W/80/A100/EM3H   | 2323 x 57 x 81 ± 1mm | 3000    | 6380/3060             | 64W/30W             | 100/102                  | 100°                     |
| 2993881 Ennio S240/3000/64W/50W/80/A100/EM3H   | 2323 x 57 x 81 ± 1mm | 3000    | 6380/5360             | 64W/50W             | 100/108                  | 100°                     |
| 2993882 Ennio S240/3000/64W/64W/80/A100/EM3H   | 2323 x 57 x 81 ± 1mm | 3000    | 6380/6380             | 64W/64W             | 100/100                  | 100°                     |
| 2993883 Ennio S240/3000/76W/30W/80/A100/EM3H   | 2323 x 57 x 81 ± 1mm | 3000    | 7620/3060             | 76W/30W             | 101/102                  | 100°                     |
| 2993884 Ennio S240/3000/76W/50W/80/A100/EM3H   | 2323 x 57 x 81 ± 1mm | 3000    | 7620/5360             | 76W/50W             | 101/108                  | 100°                     |
| 2993885 Ennio S240/3000/76W/64W/80/A100/EM3H   | 2323 x 57 x 81 ± 1mm | 3000    | 7620/6380             | 76W/64W             | 101/100                  | 100°                     |
| 2993886 Ennio S240/3000/76W/76W/80/A100/EM3H   | 2323 x 57 x 81 ± 1mm | 3000    | 7620/7620             | 76W/76W             | 101/101                  | 100°                     |
| 2993887 Ennio S240/3000/100W/30W/80/A100/EM3H  | 2323 x 57 x 81 ± 1mm | 3000    | 9240/3060             | 100W/30W            | 93/102                   | 100°                     |
| 2993888 Ennio S240/3000/100W/50W/80/A100/EM3H  | 2323 x 57 x 81 ± 1mm | 3000    | 9240/5360             | 100W/50W            | 93/108                   | 100°                     |
| 2993889 Ennio S240/3000/100W/64W/80/A100/EM3H  | 2323 x 57 x 81 ± 1mm | 3000    | 9240/6380             | 100W/64W            | 93/100                   | 100°                     |
| 2993890 Ennio S240/3000/100W/76W/80/A100/EM3H  | 2323 x 57 x 81 ± 1mm | 3000    | 9240/7620             | 100W/76W            | 93/101                   | 100°                     |
| 2993891 Ennio S240/3000/100W/100W/80/A100/EM3H | 2323 x 57 x 81 ± 1mm | 3000    | 9240/9240             | 100W/100W           | 93/93                    | 100°                     |
| 2993892 Ennio S240/4000/64W/30W/80/A100/EM3H   | 2323 x 57 x 81 ± 1mm | 4000    | 6380/3060             | 64W/30W             | 100/102                  | 100°                     |
| 2993893 Ennio S240/4000/64W/50W/80/A100/EM3H   | 2323 x 57 x 81 ± 1mm | 4000    | 6380/5360             | 64W/50W             | 100/108                  | 100°                     |
| 2993894 Ennio S240/4000/64W/64W/80/A100/EM3H   | 2323 x 57 x 81 ± 1mm | 4000    | 6380/6380             | 64W/64W             | 100/100                  | 100°                     |
| 2993895 Ennio S240/4000/76W/30W/80/A100/EM3H   | 2323 x 57 x 81 ± 1mm | 4000    | 7620/3060             | 76W/30W             | 101/102                  | 100°                     |
| 2993896 Ennio S240/4000/76W/50W/80/A100/EM3H   | 2323 x 57 x 81 ± 1mm | 4000    | 7620/5360             | 76W/50W             | 101/108                  | 100°                     |
| 2993897 Ennio S240/4000/76W/64W/80/A100/EM3H   | 2323 x 57 x 81 ± 1mm | 4000    | 7620/6380             | 76W/64W             | 101/100                  | 100°                     |
| 2993898 Ennio S240/4000/76W/76W/80/A100/EM3H   | 2323 x 57 x 81 ± 1mm | 4000    | 7620/7620             | 76W/76W             | 101/101                  | 100°                     |
| 2993899 Ennio S240/4000/100W/30W/80/A100/EM3H  | 2323 x 57 x 81 ± 1mm | 4000    | 9240/3060             | 100W/30W            | 93/102                   | 100°                     |
| 2993900 Ennio S240/4000/100W/50W/80/A100/EM3H  | 2323 x 57 x 81 ± 1mm | 4000    | 9240/5360             | 100W/50W            | 93/108                   | 100°                     |
| 2993901 Ennio S240/4000/100W/64W/80/A100/EM3H  | 2323 x 57 x 81 ± 1mm | 4000    | 9240/6380             | 100W/64W            | 93/100                   | 100°                     |
| 2993902 Ennio S240/4000/100W/76W/80/A100/EM3H  | 2323 x 57 x 81 ± 1mm | 4000    | 9240/7620             | 100W/76W            | 93/101                   | 100°                     |
| 2993903 Ennio S240/4000/100W/100W/80/A100/EM3H | 2323 x 57 x 81 ± 1mm | 4000    | 9240/9240             | 100W/100W           | 93/93                    | 100°                     |
| 2993904 Ennio S240/5000/64W/30W/80/A100/EM3H   | 2323 x 57 x 81 ± 1mm | 5000    | 6380/3060             | 64W/30W             | 100/102                  | 100°                     |
| 2993905 Ennio S240/5000/64W/50W/80/A100/EM3H   | 2323 x 57 x 81 ± 1mm | 5000    | 6380/5360             | 64W/50W             | 100/108                  | 100°                     |
| 2993906 Ennio S240/5000/64W/64W/80/A100/EM3H   | 2323 x 57 x 81 ± 1mm | 5000    | 6380/6380             | 64W/64W             | 100/100                  | 100°                     |
| 2993907 Ennio S240/5000/76W/30W/80/A100/EM3H   | 2323 x 57 x 81 ± 1mm | 5000    | 7620/3060             | 76W/30W             | 101/102                  | 100°                     |
| 2993908 Ennio S240/5000/76W/50W/80/A100/EM3H   | 2323 x 57 x 81 ± 1mm | 5000    | 7620/5360             | 76W/50W             | 101/108                  | 100°                     |
| 2993909 Ennio S240/5000/76W/64W/80/A100/EM3H   | 2323 x 57 x 81 ± 1mm | 5000    | 7620/6380             | 76W/64W             | 101/100                  | 100°                     |
| 2993910 Ennio S240/5000/76W/76W/80/A100/EM3H   | 2323 x 57 x 81 ± 1mm | 5000    | 7620/7620             | 76W/76W             | 101/101                  | 100°                     |
| 2993911 Ennio S240/5000/100W/30W/80/A100/EM3H  | 2323 x 57 x 81 ± 1mm | 5000    | 9240/3060             | 100W/30W            | 93/102                   | 100°                     |
| 2993912 Ennio S240/5000/100W/50W/80/A100/EM3H  | 2323 x 57 x 81 ± 1mm | 5000    | 9240/5360             | 100W/50W            | 93/108                   | 100°                     |
| 2993913 Ennio S240/5000/100W/64W/80/A100/EM3H  | 2323 x 57 x 81 ± 1mm | 5000    | 9240/6380             | 100W/64W            | 93/100                   | 100°                     |
| 2993914 Ennio S240/5000/100W/76W/80/A100/EM3H  | 2323 x 57 x 81 ± 1mm | 5000    | 9240/7620             | 100W/76W            | 93/101                   | 100°                     |
| 2993915 Ennio S240/5000/100W/100W/80/A100/EM3H | 2323 x 57 x 81 ± 1mm | 5000    | 9240/9240             | 100W/100W           | 93/93                    | 100°                     |
| 2993916 Ennio S240/6500/64W/30W/80/A100/EM3H   | 2323 x 57 x 81 ± 1mm | 6500    | 6380/3060             | 64W/30W             | 100/102                  | 100°                     |
| 2993917 Ennio S240/6500/64W/50W/80/A100/EM3H   | 2323 x 57 x 81 ± 1mm | 6500    | 6380/5360             | 64W/50W             | 100/108                  | 100°                     |
| 2993918 Ennio S240/6500/64W/64W/80/A100/EM3H   | 2323 x 57 x 81 ± 1mm | 6500    | 6380/6380             | 64W/64W             | 100/100                  | 100°                     |
| 2993919 Ennio S240/6500/76W/30W/80/A100/EM3H   | 2323 x 57 x 81 ± 1mm | 6500    | 7620/3060             | 76W/30W             | 101/102                  | 100°                     |
| 2993920 Ennio S240/6500/76W/50W/80/A100/EM3H   | 2323 x 57 x 81 ± 1mm | 6500    | 7620/5360             | 76W/50W             | 101/108                  | 100°                     |
| 2993921 Ennio S240/6500/76W/64W/80/A100/EM3H   | 2323 x 57 x 81 ± 1mm | 6500    | 7620/6380             | 76W/64W             | 101/100                  | 100°                     |
| 2993922 Ennio S240/6500/76W/76W/80/A100/EM3H   | 2323 x 57 x 81 ± 1mm | 6500    | 7620/7620             | 76W/76W             | 101/101                  | 100°                     |
| 2993923 Ennio S240/6500/100W/30W/80/A100/EM3H  | 2323 x 57 x 81 ± 1mm | 6500    | 9240/3060             | 100W/30W            | 93/102                   | 100°                     |
| 2993924 Ennio S240/6500/100W/50W/80/A100/EM3H  | 2323 x 57 x 81 ± 1mm | 6500    | 9240/5360             | 100W/50W            | 93/108                   | 100°                     |
| 2993925 Ennio S240/6500/100W/64W/80/A100/EM3H  | 2323 x 57 x 81 ± 1mm | 6500    | 9240/6380             | 100W/64W            | 93/100                   | 100°                     |
| 2993926 Ennio S240/6500/100W/76W/80/A100/EM3H  | 2323 x 57 x 81 ± 1mm | 6500    | 9240/7620             | 100W/76W            | 93/101                   | 100°                     |
| 2993927 Ennio S240/6500/100W/100W/80/A100/EM3H | 2323 x 57 x 81 ± 1mm | 6500    | 9240/9240             | 100W/100W           | 93/93                    | 100°                     |

## SKU SPECIFICATIONS

| Product Code                                   | Dimensions (mm)      | CCT (K) | Lumens (lm) (UP/DOWN) | Power (W) (UP/DOWN) | Eff. (lm/watt) (UP/DOWN) | Lens Angle (°) (UP/DOWN) |
|--|----------------------|---------|-----------------------|---------------------|--------------------------|--------------------------|
| <b>CRI 80</b>                                  |                      |         |                       |                     |                          |                          |
| 2993928 Ennio S300/3000/74W/46W/80/A100/EM3H   | 2885 x 57 x 81 ± 1mm | 3000    | 7620/4900             | 74W/46W             | 103/107                  | 100°                     |
| 2993929 Ennio S300/3000/74W/66W/80/A100/EM3H   | 2885 x 57 x 81 ± 1mm | 3000    | 7620/7110             | 74W/66W             | 103/108                  | 100°                     |
| 2993930 Ennio S300/3000/74W/74W/80/A100/EM3H   | 2885 x 57 x 81 ± 1mm | 3000    | 7620/7620             | 74W/74W             | 103/103                  | 100°                     |
| 2993931 Ennio S300/3000/100W/46W/80/A100/EM3H  | 2885 x 57 x 81 ± 1mm | 3000    | 10000/4900            | 100W/46W            | 100/107                  | 100°                     |
| 2993932 Ennio S300/3000/100W/66W/80/A100/EM3H  | 2885 x 57 x 81 ± 1mm | 3000    | 10000/7110            | 100W/66W            | 100/108                  | 100°                     |
| 2993933 Ennio S300/3000/100W/74W/80/A100/EM3H  | 2885 x 57 x 81 ± 1mm | 3000    | 10000/7620            | 100W/74W            | 100/103                  | 100°                     |
| 2993934 Ennio S300/3000/100W/100W/80/A100/EM3H | 2885 x 57 x 81 ± 1mm | 3000    | 10000/10000           | 100W/100W           | 100/100                  | 100°                     |
| 2993935 Ennio S300/3000/120W/46W/80/A100/EM3H  | 2885 x 57 x 81 ± 1mm | 3000    | 11500/4900            | 120W/46W            | 96/107                   | 100°                     |
| 2993936 Ennio S300/3000/120W/66W/80/A100/EM3H  | 2885 x 57 x 81 ± 1mm | 3000    | 11500/7110            | 120W/66W            | 96/108                   | 100°                     |
| 2993937 Ennio S300/3000/120W/74W/80/A100/EM3H  | 2885 x 57 x 81 ± 1mm | 3000    | 11500/7620            | 120W/74W            | 96/103                   | 100°                     |
| 2993938 Ennio S300/3000/120W/100W/80/A100/EM3H | 2885 x 57 x 81 ± 1mm | 3000    | 11500/10000           | 120W/100W           | 96/100                   | 100°                     |
| 2993939 Ennio S300/3000/120W/120W/80/A100/EM3H | 2885 x 57 x 81 ± 1mm | 3000    | 11500/11500           | 120W/120W           | 96/96                    | 100°                     |
| 2993940 Ennio S300/4000/74W/46W/80/A100/EM3H   | 2885 x 57 x 81 ± 1mm | 4000    | 7620/4900             | 74W/46W             | 103/107                  | 100°                     |
| 2993941 Ennio S300/4000/74W/66W/80/A100/EM3H   | 2885 x 57 x 81 ± 1mm | 4000    | 7620/7110             | 74W/66W             | 103/108                  | 100°                     |
| 2993942 Ennio S300/4000/74W/74W/80/A100/EM3H   | 2885 x 57 x 81 ± 1mm | 4000    | 7620/7620             | 74W/74W             | 103/103                  | 100°                     |
| 2993943 Ennio S300/4000/100W/46W/80/A100/EM3H  | 2885 x 57 x 81 ± 1mm | 4000    | 10000/4900            | 100W/46W            | 100/107                  | 100°                     |
| 2993944 Ennio S300/4000/100W/66W/80/A100/EM3H  | 2885 x 57 x 81 ± 1mm | 4000    | 10000/7110            | 100W/66W            | 100/108                  | 100°                     |
| 2993945 Ennio S300/4000/100W/74W/80/A100/EM3H  | 2885 x 57 x 81 ± 1mm | 4000    | 10000/7620            | 100W/74W            | 100/103                  | 100°                     |
| 2993946 Ennio S300/4000/100W/100W/80/A100/EM3H | 2885 x 57 x 81 ± 1mm | 4000    | 10000/10000           | 100W/100W           | 100/100                  | 100°                     |
| 2993947 Ennio S300/4000/120W/46W/80/A100/EM3H  | 2885 x 57 x 81 ± 1mm | 4000    | 11500/4900            | 120W/46W            | 96/107                   | 100°                     |
| 2993948 Ennio S300/4000/120W/66W/80/A100/EM3H  | 2885 x 57 x 81 ± 1mm | 4000    | 11500/7110            | 120W/66W            | 96/108                   | 100°                     |
| 2993949 Ennio S300/4000/120W/74W/80/A100/EM3H  | 2885 x 57 x 81 ± 1mm | 4000    | 11500/7620            | 120W/74W            | 96/103                   | 100°                     |
| 2993950 Ennio S300/4000/120W/100W/80/A100/EM3H | 2885 x 57 x 81 ± 1mm | 4000    | 11500/10000           | 120W/100W           | 96/100                   | 100°                     |
| 2993951 Ennio S300/4000/120W/120W/80/A100/EM3H | 2885 x 57 x 81 ± 1mm | 4000    | 11500/11500           | 120W/120W           | 96/96                    | 100°                     |
| 2993952 Ennio S300/5000/74W/46W/80/A100/EM3H   | 2885 x 57 x 81 ± 1mm | 5000    | 7620/4900             | 74W/46W             | 103/107                  | 100°                     |
| 2993953 Ennio S300/5000/74W/66W/80/A100/EM3H   | 2885 x 57 x 81 ± 1mm | 5000    | 7620/7110             | 74W/66W             | 103/108                  | 100°                     |
| 2993954 Ennio S300/5000/74W/74W/80/A100/EM3H   | 2885 x 57 x 81 ± 1mm | 5000    | 7620/7620             | 74W/74W             | 103/103                  | 100°                     |
| 2993955 Ennio S300/5000/100W/46W/80/A100/EM3H  | 2885 x 57 x 81 ± 1mm | 5000    | 10000/4900            | 100W/46W            | 100/107                  | 100°                     |
| 2993956 Ennio S300/5000/100W/66W/80/A100/EM3H  | 2885 x 57 x 81 ± 1mm | 5000    | 10000/7110            | 100W/66W            | 100/108                  | 100°                     |
| 2993957 Ennio S300/5000/100W/74W/80/A100/EM3H  | 2885 x 57 x 81 ± 1mm | 5000    | 10000/7620            | 100W/74W            | 100/103                  | 100°                     |
| 2993958 Ennio S300/5000/100W/100W/80/A100/EM3H | 2885 x 57 x 81 ± 1mm | 5000    | 10000/10000           | 100W/100W           | 100/100                  | 100°                     |
| 2993959 Ennio S300/5000/120W/46W/80/A100/EM3H  | 2885 x 57 x 81 ± 1mm | 5000    | 11500/4900            | 120W/46W            | 96/107                   | 100°                     |
| 2993960 Ennio S300/5000/120W/66W/80/A100/EM3H  | 2885 x 57 x 81 ± 1mm | 5000    | 11500/7110            | 120W/66W            | 96/108                   | 100°                     |
| 2993961 Ennio S300/5000/120W/74W/80/A100/EM3H  | 2885 x 57 x 81 ± 1mm | 5000    | 11500/7620            | 120W/74W            | 96/103                   | 100°                     |
| 2993962 Ennio S300/5000/120W/100W/80/A100/EM3H | 2885 x 57 x 81 ± 1mm | 5000    | 11500/10000           | 120W/100W           | 96/100                   | 100°                     |
| 2993963 Ennio S300/5000/120W/120W/80/A100/EM3H | 2885 x 57 x 81 ± 1mm | 5000    | 11500/11500           | 120W/120W           | 96/96                    | 100°                     |
| 2993964 Ennio S300/6500/74W/46W/80/A100/EM3H   | 2885 x 57 x 81 ± 1mm | 6500    | 7620/4900             | 74W/46W             | 103/107                  | 100°                     |
| 2993965 Ennio S300/6500/74W/66W/80/A100/EM3H   | 2885 x 57 x 81 ± 1mm | 6500    | 7620/7110             | 74W/66W             | 103/108                  | 100°                     |
| 2993966 Ennio S300/6500/74W/74W/80/A100/EM3H   | 2885 x 57 x 81 ± 1mm | 6500    | 7620/7620             | 74W/74W             | 103/103                  | 100°                     |
| 2993967 Ennio S300/6500/100W/46W/80/A100/EM3H  | 2885 x 57 x 81 ± 1mm | 6500    | 10000/4900            | 100W/46W            | 100/107                  | 100°                     |
| 2993968 Ennio S300/6500/100W/66W/80/A100/EM3H  | 2885 x 57 x 81 ± 1mm | 6500    | 10000/7110            | 100W/66W            | 100/108                  | 100°                     |
| 2993969 Ennio S300/6500/100W/74W/80/A100/EM3H  | 2885 x 57 x 81 ± 1mm | 6500    | 10000/7620            | 100W/74W            | 100/103                  | 100°                     |
| 2993970 Ennio S300/6500/100W/100W/80/A100/EM3H | 2885 x 57 x 81 ± 1mm | 6500    | 10000/10000           | 100W/100W           | 100/100                  | 100°                     |
| 2993971 Ennio S300/6500/120W/46W/80/A100/EM3H  | 2885 x 57 x 81 ± 1mm | 6500    | 11500/4900            | 120W/46W            | 96/107                   | 100°                     |
| 2993972 Ennio S300/6500/120W/66W/80/A100/EM3H  | 2885 x 57 x 81 ± 1mm | 6500    | 11500/7110            | 120W/66W            | 96/108                   | 100°                     |
| 2993973 Ennio S300/6500/120W/74W/80/A100/EM3H  | 2885 x 57 x 81 ± 1mm | 6500    | 11500/7620            | 120W/74W            | 96/103                   | 100°                     |
| 2993974 Ennio S300/6500/120W/100W/80/A100/EM3H | 2885 x 57 x 81 ± 1mm | 6500    | 11500/10000           | 120W/100W           | 96/100                   | 100°                     |
| 2993975 Ennio S300/6500/120W/120W/80/A100/EM3H | 2885 x 57 x 81 ± 1mm | 6500    | 11500/11500           | 120W/120W           | 96/96                    | 100°                     |

**PRODUCT CUSTOMIZATION**

---

This product has a great customization capability for combining CRI and CCT.

Below we presented possible CRI / CCT options:

| UP         | DOWN        |
|------------|-------------|
| 2700 CRI80 | 2400K CRI80 |
| 3000 CRI80 | 2700K CRI80 |
| 4000 CRI80 | 3000K CRI80 |
| 5000 CRI80 | 4000K CRI80 |
| 6500 CRI80 | 2700K CRI90 |
| TW         | 2700K CRI90 |
| PI         | 3000K CRI90 |
|            | 4000K CRI90 |
|            | 2700K CRI95 |
|            | 3000K CRI95 |
|            | 3500K CRI95 |
|            | 4000K CRI95 |

For more information please send us a message using the [contact form](#) on our website.

---