



Ennio UP&DOWN PC

SUSPENDED | DALI SERIES

Ennio UP&DOWN PC is a versatile suspended luminaire that emits light both upwards and downwards. Providing indirect light on its superior side, Ennio creates a mellow ambient in the working space with reduced glare due to indirect lighting by projecting the light beam towards the ceiling.

Tunable white - Light color temperature can be adjusted to reflect the need or mood of the user. The light provided by the luminaires can be changed from warm to cold, in a range between 2700K - 6500K.

PI-LED - Combines variable white light and light of the RGB color system in one single light source. It can vary the color temperature between 2700K - 6500K along Planckian curve in the course of a day.

Ennio UP&DOWN PC has several series, determined by various add-on and controls:

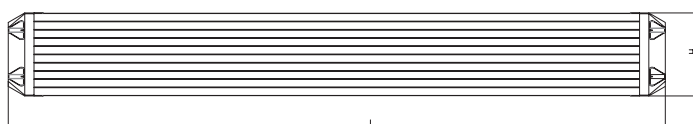
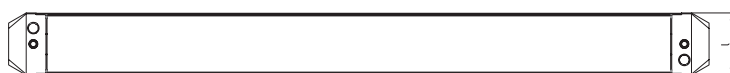
- Ennio UP&DOWN PC Non-DALI: the standard version
- Ennio UP&DOWN PC Non-DALI EM: the standard version with emergency option (UP)
- **Ennio UP&DOWN PC DALI: with DALI controls for illumination adjustments**
- Ennio UP&DOWN PC DALI EM: with DALI controls for illumination adjustments and emergency options (UP)
- Ennio UP&DOWN PC TW: the tunable white system with adjustable colour temperature
- Ennio UP&DOWN PC PI-LED - simulates the spectral quality of natural daylight over the entire day.

FEATURES & BENEFITS

- CRI 80 as standard
- Color temperatures: 3000K, 4000K, 5000K and 6500K
- Long rated life: L90/B10@50.000h
- Luminaire efficiency (UP/DOWN): 103/108 lm/w @4000K

APPLICATION

Office | Healthcare | Hospitality | DIY

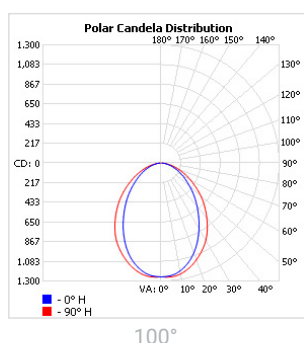


SPECIFICATIONS

| | | | | |
|--------------------------------|---------------------------------|-------------------------|--------------------------|---------------------------|
| Power consumption (UP) | 32W, 38W, 50W | 37W, 50W, 60W | 64W, 76W, 100W | 74W, 100W, 120W |
| Power consumption (DOWN) | 15W, 25W, 32W, 38W, 50W | 23W, 33W, 37W, 50W, 60W | 30W, 50W, 64W, 76W, 100W | 46W, 66W, 74W, 100W, 120W |
| Dimensions | 1201 x 57 x 81 ± 1mm | 1482 x 57 x 81 ± 1mm | 2323 x 57 x 81 ± 1mm | 2885 x 57 x 81 ± 1mm |
| Weight | 3.1 kg | 3.8 kg | 5.8 kg | 6.8 kg |
| DALI addresses | 2 addresses | 2 addresses | 4 addresses | 4 addresses |
| Housing materials | Aluminum & Polycarbonate | | | |
| IK code | IK02 | | | |
| THD (at 230V, 50Hz, Full load) | <9% | | | |
| Protection class | Safety class 1 | | | |
| Operating temperature [°C] | -20°C ... +45°C / -4F ... +113F | | | |
| Operating humidity [%] | 10 ÷ 85 | | | |
| Power factor | ≥0.95 | | | |
| AC Input [Vac] | 220 - 240 VAC | | | |
| Lens angle [°] (UP/DOWN) | 100° | | | |
| Lifespan [h] | 50,000 | | | |
| Housing color | ● Anodised black | | | |
| Lumen maintenance | L90/B10@50.000h at 25°C | | | |
| IP factor | IP20 | | | |
| Control optional | DALI | | | |
| Warranty [years] | 5 | | | |
| Storage temperature range [°C] | -20°C ... +55°C / -4F ... +131F | | | |
| Emergency option | - | | | |
| Efficiency@4000K (UP) | 103 lm/W | | | |
| Efficiency@4000K (DOWN) | 108 lm/W | | | |
| Light application | Standard | | | |
| CRI | CRI 80 | | | |
| CCT [K] | 3000K, 4000K, 5000K, 6500K | | | |
| MacAdam | 4 | | | |

CRI - Color rendering, CCT - Color temperature, MacAdam - Color consistency

LIGHT DISTRIBUTION



TOLERANCES

Luminous flux tolerances: -/+ 5%

Consumption tolerance: -/+ 5% for Non-DALI | -/+ 10% for Non-DALI & KIT EM | -/+ 10% for DALI | -/+ 15% for DALI & KIT EM

BATTERY WARRANTY

Non-DALI EM & DALI EM: 12 months warranty

Non-DALI & DALI: -

MAXIMUM NO. OF LUMINAIRES ON A CIRCUIT FOR DIMENSIONS 1214 X 57 X 81 ± 1MM AND 1501 X 57 X 81 ± 1MM

| Luminaire Power(W) | Control type | Circuit Breaker Type | | | | | |
|--------------------|--------------|----------------------|----|----|----|----|----|
| | | B | | | C | | |
| | | 20 | 16 | 10 | 20 | 16 | 10 |
| < 100W | Non-DALI | 19 | 15 | 9 | 31 | 26 | 16 |
| ≥ 100W | Non-DALI | 19 | 15 | 9 | 31 | 26 | 16 |
| < 160W | DALI | 13 | 10 | 6 | 22 | 17 | 10 |

MAXIMUM NO. OF LUMINAIRES ON A CIRCUIT FOR DIMENSIONS 2362 X 57 X 81 ± 1MM AND 2936 X 57 X 81 ± 1MM

| Luminaire Power(W) | Control type | Circuit Breaker Type | | | | | |
|--------------------|--------------|----------------------|----|----|----|----|----|
| | | B | | | C | | |
| | | 20 | 16 | 10 | 20 | 16 | 10 |
| < 50W | Non-DALI | 9 | 7 | 4 | 15 | 12 | 7 |
| ≥ 50W | Non-DALI | 9 | 7 | 4 | 15 | 12 | 7 |
| < 80W | DALI | 6 | 5 | 3 | 11 | 8 | 5 |

RISK GROUP

| | |
|----------------------|-----|
| Standard (CRI80) | RG1 |
| FOOD (BVF, FBS, FSM) | RG1 |
| FOOD ≤35W (FZM, FSH) | RG1 |
| FOOD >35W (FZM, FSH) | RG2 |
| FAS | RG1 |
| AMB2200 | RG1 |
| ART | RG1 |
| AGI | RG1 |
| CRI90 | RG1 |
| CRI95 | RG1 |
| ENT | RG1 |

RG1

The evaluation of photobiological safety is carried out according to the standard IEC 62471:2008 ("Photobiological safety of lamps and lamp systems"). Following the definition of the risk grouping system of the mentioned IEC standard, the LEDs mounted on this family fall into the class "Low Risk (RG1 – No photobiological hazard under normal behavioral limitations)". Under real circumstances (regarding exposure time, pupils, observation distance), it is assumed that there is no endangerment to the eye from these devices. As a matter of principle, however, it should be mentioned that intense light sources have a high secondary exposure potential due to their blinding effect.

RG2

The evaluation of photobiological safety is carried out according to the standard IEC 62471:2008 ("Photobiological safety of lamps and lamp systems"). Following the definition of the risk grouping system of the mentioned IEC standard, the LEDs mounted on this family fall into the class "Moderate Risk (RG2)". Under real circumstances (regarding exposure time, pupils, observation distance), it is assumed that there is no endangerment to the eye from these devices. As a matter of principle, however, it should be mentioned that intense light sources have a high secondary exposure potential due to their blinding effect.

SKU SPECIFICATIONS

| Product Code | Dimensions (mm) | CCT (K) | Lumens (lm) (UP/DOWN) | Power (W) (UP/DOWN) | Eff. (lm/watt) (UP/DOWN) | Lens Angle (°) (UP/DOWN) |
|---|----------------------|---------|-----------------------|---------------------|--------------------------|--------------------------|
| CRI 80 | | | | | | |
| 2993400 Ennio S120/3000/32W/15W/80/A100 | 1201 x 57 x 81 ± 1mm | 3000 | 3190/1530 | 32W/15W | 100/102 | 100° |
| 2993401 Ennio S120/3000/32W/25W/80/A100 | 1201 x 57 x 81 ± 1mm | 3000 | 3190/2680 | 32W/25W | 100/108 | 100° |
| 2993402 Ennio S120/3000/32W/32W/80/A100 | 1201 x 57 x 81 ± 1mm | 3000 | 3190/3190 | 32W/32W | 100/100 | 100° |
| 2993403 Ennio S120/3000/38W/15W/80/A100 | 1201 x 57 x 81 ± 1mm | 3000 | 3810/1530 | 38W/15W | 101/102 | 100° |
| 2993404 Ennio S120/3000/38W/25W/80/A100 | 1201 x 57 x 81 ± 1mm | 3000 | 3810/2680 | 38W/25W | 101/108 | 100° |
| 2993405 Ennio S120/3000/38W/32W/80/A100 | 1201 x 57 x 81 ± 1mm | 3000 | 3810/3190 | 38W/32W | 101/100 | 100° |
| 2993406 Ennio S120/3000/38W/38W/80/A100 | 1201 x 57 x 81 ± 1mm | 3000 | 3810/3810 | 38W/38W | 101/101 | 100° |
| 2993407 Ennio S120/3000/50W/15W/80/A100 | 1201 x 57 x 81 ± 1mm | 3000 | 4620/1530 | 50W/15W | 93/102 | 100° |
| 2993408 Ennio S120/3000/50W/25W/80/A100 | 1201 x 57 x 81 ± 1mm | 3000 | 4620/2680 | 50W/25W | 93/108 | 100° |
| 2993409 Ennio S120/3000/50W/32W/80/A100 | 1201 x 57 x 81 ± 1mm | 3000 | 4620/3190 | 50W/32W | 93/100 | 100° |
| 2993410 Ennio S120/3000/50W/38W/80/A100 | 1201 x 57 x 81 ± 1mm | 3000 | 4620/3810 | 50W/38W | 93/101 | 100° |
| 2993411 Ennio S120/3000/50W/50W/80/A100 | 1201 x 57 x 81 ± 1mm | 3000 | 4620/4620 | 50W/50W | 93/93 | 100° |
| 2993412 Ennio S120/4000/32W/15W/80/A100 | 1201 x 57 x 81 ± 1mm | 4000 | 3190/1530 | 32W/15W | 100/102 | 100° |
| 2993413 Ennio S120/4000/32W/25W/80/A100 | 1201 x 57 x 81 ± 1mm | 4000 | 3190/2680 | 32W/25W | 100/108 | 100° |
| 2993414 Ennio S120/4000/32W/32W/80/A100 | 1201 x 57 x 81 ± 1mm | 4000 | 3190/3190 | 32W/32W | 100/100 | 100° |
| 2993415 Ennio S120/4000/38W/15W/80/A100 | 1201 x 57 x 81 ± 1mm | 4000 | 3810/1530 | 38W/15W | 101/102 | 100° |
| 2993416 Ennio S120/4000/38W/25W/80/A100 | 1201 x 57 x 81 ± 1mm | 4000 | 3810/2680 | 38W/25W | 101/108 | 100° |
| 2993417 Ennio S120/4000/38W/32W/80/A100 | 1201 x 57 x 81 ± 1mm | 4000 | 3810/3190 | 38W/32W | 101/100 | 100° |
| 2993418 Ennio S120/4000/38W/38W/80/A100 | 1201 x 57 x 81 ± 1mm | 4000 | 3810/3810 | 38W/38W | 101/101 | 100° |
| 2993419 Ennio S120/4000/50W/15W/80/A100 | 1201 x 57 x 81 ± 1mm | 4000 | 4620/1530 | 50W/15W | 93/102 | 100° |
| 2993420 Ennio S120/4000/50W/25W/80/A100 | 1201 x 57 x 81 ± 1mm | 4000 | 4620/2680 | 50W/25W | 93/108 | 100° |
| 2993421 Ennio S120/4000/50W/32W/80/A100 | 1201 x 57 x 81 ± 1mm | 4000 | 4620/3190 | 50W/32W | 93/100 | 100° |
| 2993422 Ennio S120/4000/50W/38W/80/A100 | 1201 x 57 x 81 ± 1mm | 4000 | 4620/3810 | 50W/38W | 93/101 | 100° |
| 2993423 Ennio S120/4000/50W/50W/80/A100 | 1201 x 57 x 81 ± 1mm | 4000 | 4620/4620 | 50W/50W | 93/93 | 100° |
| 2993424 Ennio S120/5000/32W/15W/80/A100 | 1201 x 57 x 81 ± 1mm | 5000 | 3190/1530 | 32W/15W | 100/102 | 100° |
| 2993425 Ennio S120/5000/32W/25W/80/A100 | 1201 x 57 x 81 ± 1mm | 5000 | 3190/2680 | 32W/25W | 100/108 | 100° |
| 2993426 Ennio S120/5000/32W/32W/80/A100 | 1201 x 57 x 81 ± 1mm | 5000 | 3190/3190 | 32W/32W | 100/100 | 100° |
| 2993427 Ennio S120/5000/38W/15W/80/A100 | 1201 x 57 x 81 ± 1mm | 5000 | 3810/1530 | 38W/15W | 101/102 | 100° |
| 2993428 Ennio S120/5000/38W/25W/80/A100 | 1201 x 57 x 81 ± 1mm | 5000 | 3810/2680 | 38W/25W | 101/108 | 100° |
| 2993429 Ennio S120/5000/38W/32W/80/A100 | 1201 x 57 x 81 ± 1mm | 5000 | 3810/3190 | 38W/32W | 101/100 | 100° |
| 2993430 Ennio S120/5000/38W/38W/80/A100 | 1201 x 57 x 81 ± 1mm | 5000 | 3810/3810 | 38W/38W | 101/101 | 100° |
| 2993431 Ennio S120/5000/50W/15W/80/A100 | 1201 x 57 x 81 ± 1mm | 5000 | 4620/1530 | 50W/15W | 93/102 | 100° |
| 2993432 Ennio S120/5000/50W/25W/80/A100 | 1201 x 57 x 81 ± 1mm | 5000 | 4620/2680 | 50W/25W | 93/108 | 100° |
| 2993433 Ennio S120/5000/50W/32W/80/A100 | 1201 x 57 x 81 ± 1mm | 5000 | 4620/3190 | 50W/32W | 93/100 | 100° |
| 2993434 Ennio S120/5000/50W/38W/80/A100 | 1201 x 57 x 81 ± 1mm | 5000 | 4620/3810 | 50W/38W | 93/101 | 100° |
| 2993435 Ennio S120/5000/50W/50W/80/A100 | 1201 x 57 x 81 ± 1mm | 5000 | 4620/4620 | 50W/50W | 93/93 | 100° |
| 2993436 Ennio S120/6500/32W/15W/80/A100 | 1201 x 57 x 81 ± 1mm | 6500 | 3190/1530 | 32W/15W | 100/102 | 100° |
| 2993437 Ennio S120/6500/32W/25W/80/A100 | 1201 x 57 x 81 ± 1mm | 6500 | 3190/2680 | 32W/25W | 100/108 | 100° |
| 2993438 Ennio S120/6500/32W/32W/80/A100 | 1201 x 57 x 81 ± 1mm | 6500 | 3190/3190 | 32W/32W | 100/100 | 100° |
| 2993439 Ennio S120/6500/38W/15W/80/A100 | 1201 x 57 x 81 ± 1mm | 6500 | 3810/1530 | 38W/15W | 101/102 | 100° |
| 2993440 Ennio S120/6500/38W/25W/80/A100 | 1201 x 57 x 81 ± 1mm | 6500 | 3810/2680 | 38W/25W | 101/108 | 100° |
| 2993441 Ennio S120/6500/38W/32W/80/A100 | 1201 x 57 x 81 ± 1mm | 6500 | 3810/3190 | 38W/32W | 101/100 | 100° |
| 2993442 Ennio S120/6500/38W/38W/80/A100 | 1201 x 57 x 81 ± 1mm | 6500 | 3810/3810 | 38W/38W | 101/101 | 100° |
| 2993443 Ennio S120/6500/50W/15W/80/A100 | 1201 x 57 x 81 ± 1mm | 6500 | 4620/1530 | 50W/15W | 93/102 | 100° |
| 2993444 Ennio S120/6500/50W/25W/80/A100 | 1201 x 57 x 81 ± 1mm | 6500 | 4620/2680 | 50W/25W | 93/108 | 100° |
| 2993445 Ennio S120/6500/50W/32W/80/A100 | 1201 x 57 x 81 ± 1mm | 6500 | 4620/3190 | 50W/32W | 93/100 | 100° |
| 2993446 Ennio S120/6500/50W/38W/80/A100 | 1201 x 57 x 81 ± 1mm | 6500 | 4620/3810 | 50W/38W | 93/101 | 100° |
| 2993447 Ennio S120/6500/50W/50W/80/A100 | 1201 x 57 x 81 ± 1mm | 6500 | 4620/4620 | 50W/50W | 93/93 | 100° |

SKU SPECIFICATIONS

| Product Code | Dimensions (mm) | CCT (K) | Lumens (lm) (UP/DOWN) | Power (W) (UP/DOWN) | Eff. (lm/watt) (UP/DOWN) | Lens Angle (°) (UP/DOWN) |
|---|----------------------|---------|-----------------------|---------------------|--------------------------|--------------------------|
| CRI 80 | | | | | | |
| 2993448 Ennio S150/3000/37W/23W/80/A100 | 1482 x 57 x 81 ± 1mm | 3000 | 3810/2450 | 37W/23W | 103/107 | 100° |
| 2993449 Ennio S150/3000/37W/33W/80/A100 | 1482 x 57 x 81 ± 1mm | 3000 | 3810/3555 | 37W/33W | 103/108 | 100° |
| 2993450 Ennio S150/3000/37W/37W/80/A100 | 1482 x 57 x 81 ± 1mm | 3000 | 3810/3810 | 37W/37W | 103/103 | 100° |
| 2993451 Ennio S150/3000/50W/23W/80/A100 | 1482 x 57 x 81 ± 1mm | 3000 | 5000/2450 | 50W/23W | 100/107 | 100° |
| 2993452 Ennio S150/3000/50W/33W/80/A100 | 1482 x 57 x 81 ± 1mm | 3000 | 5000/3555 | 50W/33W | 100/108 | 100° |
| 2993453 Ennio S150/3000/50W/37W/80/A100 | 1482 x 57 x 81 ± 1mm | 3000 | 5000/3810 | 50W/37W | 100/103 | 100° |
| 2993454 Ennio S150/3000/50W/50W/80/A100 | 1482 x 57 x 81 ± 1mm | 3000 | 5000/5000 | 50W/50W | 100/100 | 100° |
| 2993455 Ennio S150/3000/60W/23W/80/A100 | 1482 x 57 x 81 ± 1mm | 3000 | 5750/2450 | 60W/23W | 96/107 | 100° |
| 2993456 Ennio S150/3000/60W/33W/80/A100 | 1482 x 57 x 81 ± 1mm | 3000 | 5750/3555 | 60W/33W | 96/108 | 100° |
| 2993457 Ennio S150/3000/60W/37W/80/A100 | 1482 x 57 x 81 ± 1mm | 3000 | 5750/3810 | 60W/37W | 96/103 | 100° |
| 2993458 Ennio S150/3000/60W/50W/80/A100 | 1482 x 57 x 81 ± 1mm | 3000 | 5750/5000 | 60W/50W | 96/100 | 100° |
| 2993459 Ennio S150/3000/60W/60W/80/A100 | 1482 x 57 x 81 ± 1mm | 3000 | 5750/5750 | 60W/60W | 96/96 | 100° |
| 2993460 Ennio S150/4000/37W/23W/80/A100 | 1482 x 57 x 81 ± 1mm | 4000 | 3810/2450 | 37W/23W | 103/107 | 100° |
| 2993461 Ennio S150/4000/37W/33W/80/A100 | 1482 x 57 x 81 ± 1mm | 4000 | 3810/3555 | 37W/33W | 103/108 | 100° |
| 2993462 Ennio S150/4000/37W/37W/80/A100 | 1482 x 57 x 81 ± 1mm | 4000 | 3810/3810 | 37W/37W | 103/103 | 100° |
| 2993463 Ennio S150/4000/50W/23W/80/A100 | 1482 x 57 x 81 ± 1mm | 4000 | 5000/2450 | 50W/23W | 100/107 | 100° |
| 2993464 Ennio S150/4000/50W/33W/80/A100 | 1482 x 57 x 81 ± 1mm | 4000 | 5000/3555 | 50W/33W | 100/108 | 100° |
| 2993465 Ennio S150/4000/50W/37W/80/A100 | 1482 x 57 x 81 ± 1mm | 4000 | 5000/3810 | 50W/37W | 100/103 | 100° |
| 2993466 Ennio S150/4000/50W/50W/80/A100 | 1482 x 57 x 81 ± 1mm | 4000 | 5000/5000 | 50W/50W | 100/100 | 100° |
| 2993467 Ennio S150/4000/60W/23W/80/A100 | 1482 x 57 x 81 ± 1mm | 4000 | 5750/2450 | 60W/23W | 96/107 | 100° |
| 2993468 Ennio S150/4000/60W/33W/80/A100 | 1482 x 57 x 81 ± 1mm | 4000 | 5750/3555 | 60W/33W | 96/108 | 100° |
| 2993469 Ennio S150/4000/60W/37W/80/A100 | 1482 x 57 x 81 ± 1mm | 4000 | 5750/3810 | 60W/37W | 96/103 | 100° |
| 2993470 Ennio S150/4000/60W/50W/80/A100 | 1482 x 57 x 81 ± 1mm | 4000 | 5750/5000 | 60W/50W | 96/100 | 100° |
| 2993471 Ennio S150/4000/60W/60W/80/A100 | 1482 x 57 x 81 ± 1mm | 4000 | 5750/5750 | 60W/60W | 96/96 | 100° |
| 2993472 Ennio S150/5000/37W/23W/80/A100 | 1482 x 57 x 81 ± 1mm | 5000 | 3810/2450 | 37W/23W | 103/107 | 100° |
| 2993473 Ennio S150/5000/37W/33W/80/A100 | 1482 x 57 x 81 ± 1mm | 5000 | 3810/3555 | 37W/33W | 103/108 | 100° |
| 2993474 Ennio S150/5000/37W/37W/80/A100 | 1482 x 57 x 81 ± 1mm | 5000 | 3810/3810 | 37W/37W | 103/103 | 100° |
| 2993475 Ennio S150/5000/50W/23W/80/A100 | 1482 x 57 x 81 ± 1mm | 5000 | 5000/2450 | 50W/23W | 100/107 | 100° |
| 2993476 Ennio S150/5000/50W/33W/80/A100 | 1482 x 57 x 81 ± 1mm | 5000 | 5000/3555 | 50W/33W | 100/108 | 100° |
| 2993477 Ennio S150/5000/50W/37W/80/A100 | 1482 x 57 x 81 ± 1mm | 5000 | 5000/3810 | 50W/37W | 100/103 | 100° |
| 2993478 Ennio S150/5000/50W/50W/80/A100 | 1482 x 57 x 81 ± 1mm | 5000 | 5000/5000 | 50W/50W | 100/100 | 100° |
| 2993479 Ennio S150/5000/60W/23W/80/A100 | 1482 x 57 x 81 ± 1mm | 5000 | 5750/2450 | 60W/23W | 96/107 | 100° |
| 2993480 Ennio S150/5000/60W/33W/80/A100 | 1482 x 57 x 81 ± 1mm | 5000 | 5750/3555 | 60W/33W | 96/108 | 100° |
| 2993481 Ennio S150/5000/60W/37W/80/A100 | 1482 x 57 x 81 ± 1mm | 5000 | 5750/3810 | 60W/37W | 96/103 | 100° |
| 2993482 Ennio S150/5000/60W/50W/80/A100 | 1482 x 57 x 81 ± 1mm | 5000 | 5750/5000 | 60W/50W | 96/100 | 100° |
| 2993483 Ennio S150/5000/60W/60W/80/A100 | 1482 x 57 x 81 ± 1mm | 5000 | 5750/5750 | 60W/60W | 96/96 | 100° |
| 2993484 Ennio S150/6500/37W/23W/80/A100 | 1482 x 57 x 81 ± 1mm | 6500 | 3810/2450 | 37W/23W | 103/107 | 100° |
| 2993485 Ennio S150/6500/37W/33W/80/A100 | 1482 x 57 x 81 ± 1mm | 6500 | 3810/3555 | 37W/33W | 103/108 | 100° |
| 2993486 Ennio S150/6500/37W/37W/80/A100 | 1482 x 57 x 81 ± 1mm | 6500 | 3810/3810 | 37W/37W | 103/103 | 100° |
| 2993487 Ennio S150/6500/50W/23W/80/A100 | 1482 x 57 x 81 ± 1mm | 6500 | 5000/2450 | 50W/23W | 100/107 | 100° |
| 2993488 Ennio S150/6500/50W/33W/80/A100 | 1482 x 57 x 81 ± 1mm | 6500 | 5000/3555 | 50W/33W | 100/108 | 100° |
| 2993489 Ennio S150/6500/50W/37W/80/A100 | 1482 x 57 x 81 ± 1mm | 6500 | 5000/3810 | 50W/37W | 100/103 | 100° |
| 2993490 Ennio S150/6500/50W/50W/80/A100 | 1482 x 57 x 81 ± 1mm | 6500 | 5000/5000 | 50W/50W | 100/100 | 100° |
| 2993491 Ennio S150/6500/60W/23W/80/A100 | 1482 x 57 x 81 ± 1mm | 6500 | 5750/2450 | 60W/23W | 96/107 | 100° |
| 2993492 Ennio S150/6500/60W/33W/80/A100 | 1482 x 57 x 81 ± 1mm | 6500 | 5750/3555 | 60W/33W | 96/108 | 100° |
| 2993493 Ennio S150/6500/60W/37W/80/A100 | 1482 x 57 x 81 ± 1mm | 6500 | 5750/3810 | 60W/37W | 96/103 | 100° |
| 2993494 Ennio S150/6500/60W/50W/80/A100 | 1482 x 57 x 81 ± 1mm | 6500 | 5750/5000 | 60W/50W | 96/100 | 100° |
| 2993495 Ennio S150/6500/60W/60W/80/A100 | 1482 x 57 x 81 ± 1mm | 6500 | 5750/5750 | 60W/60W | 96/96 | 100° |

SKU SPECIFICATIONS

| Product Code | Dimensions (mm) | CCT (K) | Lumens (lm) (UP/DOWN) | Power (W) (UP/DOWN) | Eff. (lm/watt) (UP/DOWN) | Lens Angle (°) (UP/DOWN) |
|---|----------------------|---------|-----------------------|---------------------|--------------------------|--------------------------|
| CRI 80 | | | | | | |
| 2993496 Ennio S240/3000/64W/30W/80/A100 | 2323 x 57 x 81 ± 1mm | 3000 | 6380/3060 | 64W/30W | 100/102 | 100° |
| 2993497 Ennio S240/3000/64W/50W/80/A100 | 2323 x 57 x 81 ± 1mm | 3000 | 6380/5360 | 64W/50W | 100/108 | 100° |
| 2993498 Ennio S240/3000/64W/64W/80/A100 | 2323 x 57 x 81 ± 1mm | 3000 | 6380/6380 | 64W/64W | 100/100 | 100° |
| 2993499 Ennio S240/3000/76W/30W/80/A100 | 2323 x 57 x 81 ± 1mm | 3000 | 7620/3060 | 76W/30W | 101/102 | 100° |
| 2993500 Ennio S240/3000/76W/50W/80/A100 | 2323 x 57 x 81 ± 1mm | 3000 | 7620/5360 | 76W/50W | 101/108 | 100° |
| 2993501 Ennio S240/3000/76W/64W/80/A100 | 2323 x 57 x 81 ± 1mm | 3000 | 7620/6380 | 76W/64W | 101/100 | 100° |
| 2993502 Ennio S240/3000/76W/76W/80/A100 | 2323 x 57 x 81 ± 1mm | 3000 | 7620/7620 | 76W/76W | 101/101 | 100° |
| 2993503 Ennio S240/3000/100W/30W/80/A100 | 2323 x 57 x 81 ± 1mm | 3000 | 9240/3060 | 100W/30W | 93/102 | 100° |
| 2993504 Ennio S240/3000/100W/50W/80/A100 | 2323 x 57 x 81 ± 1mm | 3000 | 9240/5360 | 100W/50W | 93/108 | 100° |
| 2993505 Ennio S240/3000/100W/64W/80/A100 | 2323 x 57 x 81 ± 1mm | 3000 | 9240/6380 | 100W/64W | 93/100 | 100° |
| 2993506 Ennio S240/3000/100W/76W/80/A100 | 2323 x 57 x 81 ± 1mm | 3000 | 9240/7620 | 100W/76W | 93/101 | 100° |
| 2993507 Ennio S240/3000/100W/100W/80/A100 | 2323 x 57 x 81 ± 1mm | 3000 | 9240/9240 | 100W/100W | 93/93 | 100° |
| 2993508 Ennio S240/4000/64W/30W/80/A100 | 2323 x 57 x 81 ± 1mm | 4000 | 6380/3060 | 64W/30W | 100/102 | 100° |
| 2993509 Ennio S240/4000/64W/50W/80/A100 | 2323 x 57 x 81 ± 1mm | 4000 | 6380/5360 | 64W/50W | 100/108 | 100° |
| 2993510 Ennio S240/4000/64W/64W/80/A100 | 2323 x 57 x 81 ± 1mm | 4000 | 6380/6380 | 64W/64W | 100/100 | 100° |
| 2993511 Ennio S240/4000/76W/30W/80/A100 | 2323 x 57 x 81 ± 1mm | 4000 | 7620/3060 | 76W/30W | 101/102 | 100° |
| 2993512 Ennio S240/4000/76W/50W/80/A100 | 2323 x 57 x 81 ± 1mm | 4000 | 7620/5360 | 76W/50W | 101/108 | 100° |
| 2993513 Ennio S240/4000/76W/64W/80/A100 | 2323 x 57 x 81 ± 1mm | 4000 | 7620/6380 | 76W/64W | 101/100 | 100° |
| 2993514 Ennio S240/4000/76W/76W/80/A100 | 2323 x 57 x 81 ± 1mm | 4000 | 7620/7620 | 76W/76W | 101/101 | 100° |
| 2993515 Ennio S240/4000/100W/30W/80/A100 | 2323 x 57 x 81 ± 1mm | 4000 | 9240/3060 | 100W/30W | 93/102 | 100° |
| 2993516 Ennio S240/4000/100W/50W/80/A100 | 2323 x 57 x 81 ± 1mm | 4000 | 9240/5360 | 100W/50W | 93/108 | 100° |
| 2993517 Ennio S240/4000/100W/64W/80/A100 | 2323 x 57 x 81 ± 1mm | 4000 | 9240/6380 | 100W/64W | 93/100 | 100° |
| 2993518 Ennio S240/4000/100W/76W/80/A100 | 2323 x 57 x 81 ± 1mm | 4000 | 9240/7620 | 100W/76W | 93/101 | 100° |
| 2993519 Ennio S240/4000/100W/100W/80/A100 | 2323 x 57 x 81 ± 1mm | 4000 | 9240/9240 | 100W/100W | 93/93 | 100° |
| 2993520 Ennio S240/5000/64W/30W/80/A100 | 2323 x 57 x 81 ± 1mm | 5000 | 6380/3060 | 64W/30W | 100/102 | 100° |
| 2993521 Ennio S240/5000/64W/50W/80/A100 | 2323 x 57 x 81 ± 1mm | 5000 | 6380/5360 | 64W/50W | 100/108 | 100° |
| 2993522 Ennio S240/5000/64W/64W/80/A100 | 2323 x 57 x 81 ± 1mm | 5000 | 6380/6380 | 64W/64W | 100/100 | 100° |
| 2993523 Ennio S240/5000/76W/30W/80/A100 | 2323 x 57 x 81 ± 1mm | 5000 | 7620/3060 | 76W/30W | 101/102 | 100° |
| 2993524 Ennio S240/5000/76W/50W/80/A100 | 2323 x 57 x 81 ± 1mm | 5000 | 7620/5360 | 76W/50W | 101/108 | 100° |
| 2993525 Ennio S240/5000/76W/64W/80/A100 | 2323 x 57 x 81 ± 1mm | 5000 | 7620/6380 | 76W/64W | 101/100 | 100° |
| 2993526 Ennio S240/5000/76W/76W/80/A100 | 2323 x 57 x 81 ± 1mm | 5000 | 7620/7620 | 76W/76W | 101/101 | 100° |
| 2993527 Ennio S240/5000/100W/30W/80/A100 | 2323 x 57 x 81 ± 1mm | 5000 | 9240/3060 | 100W/30W | 93/102 | 100° |
| 2993528 Ennio S240/5000/100W/50W/80/A100 | 2323 x 57 x 81 ± 1mm | 5000 | 9240/5360 | 100W/50W | 93/108 | 100° |
| 2993529 Ennio S240/5000/100W/64W/80/A100 | 2323 x 57 x 81 ± 1mm | 5000 | 9240/6380 | 100W/64W | 93/100 | 100° |
| 2993530 Ennio S240/5000/100W/76W/80/A100 | 2323 x 57 x 81 ± 1mm | 5000 | 9240/7620 | 100W/76W | 93/101 | 100° |
| 2993531 Ennio S240/5000/100W/100W/80/A100 | 2323 x 57 x 81 ± 1mm | 5000 | 9240/9240 | 100W/100W | 93/93 | 100° |
| 2993532 Ennio S240/6500/64W/30W/80/A100 | 2323 x 57 x 81 ± 1mm | 6500 | 6380/3060 | 64W/30W | 100/102 | 100° |
| 2993533 Ennio S240/6500/64W/50W/80/A100 | 2323 x 57 x 81 ± 1mm | 6500 | 6380/5360 | 64W/50W | 100/108 | 100° |
| 2993534 Ennio S240/6500/64W/64W/80/A100 | 2323 x 57 x 81 ± 1mm | 6500 | 6380/6380 | 64W/64W | 100/100 | 100° |
| 2993535 Ennio S240/6500/76W/30W/80/A100 | 2323 x 57 x 81 ± 1mm | 6500 | 7620/3060 | 76W/30W | 101/102 | 100° |
| 2993536 Ennio S240/6500/76W/50W/80/A100 | 2323 x 57 x 81 ± 1mm | 6500 | 7620/5360 | 76W/50W | 101/108 | 100° |
| 2993537 Ennio S240/6500/76W/64W/80/A100 | 2323 x 57 x 81 ± 1mm | 6500 | 7620/6380 | 76W/64W | 101/100 | 100° |
| 2993538 Ennio S240/6500/76W/76W/80/A100 | 2323 x 57 x 81 ± 1mm | 6500 | 7620/7620 | 76W/76W | 101/101 | 100° |
| 2993539 Ennio S240/6500/100W/30W/80/A100 | 2323 x 57 x 81 ± 1mm | 6500 | 9240/3060 | 100W/30W | 93/102 | 100° |
| 2993540 Ennio S240/6500/100W/50W/80/A100 | 2323 x 57 x 81 ± 1mm | 6500 | 9240/5360 | 100W/50W | 93/108 | 100° |
| 2993541 Ennio S240/6500/100W/64W/80/A100 | 2323 x 57 x 81 ± 1mm | 6500 | 9240/6380 | 100W/64W | 93/100 | 100° |
| 2993542 Ennio S240/6500/100W/76W/80/A100 | 2323 x 57 x 81 ± 1mm | 6500 | 9240/7620 | 100W/76W | 93/101 | 100° |
| 2993543 Ennio S240/6500/100W/100W/80/A100 | 2323 x 57 x 81 ± 1mm | 6500 | 9240/9240 | 100W/100W | 93/93 | 100° |

SKU SPECIFICATIONS

| Product Code | Dimensions (mm) | CCT (K) | Lumens (lm) (UP/DOWN) | Power (W) (UP/DOWN) | Eff. (lm/watt) (UP/DOWN) | Lens Angle (°) (UP/DOWN) |
|---|----------------------|---------|-----------------------|---------------------|--------------------------|--------------------------|
| CRI 80 | | | | | | |
| 2993544 Ennio S300/3000/74W/46W/80/A100 | 2885 x 57 x 81 ± 1mm | 3000 | 7620/4900 | 74W/46W | 103/107 | 100° |
| 2993545 Ennio S300/3000/74W/66W/80/A100 | 2885 x 57 x 81 ± 1mm | 3000 | 7620/7110 | 74W/66W | 103/108 | 100° |
| 2993546 Ennio S300/3000/74W/74W/80/A100 | 2885 x 57 x 81 ± 1mm | 3000 | 7620/7620 | 74W/74W | 103/103 | 100° |
| 2993547 Ennio S300/3000/100W/46W/80/A100 | 2885 x 57 x 81 ± 1mm | 3000 | 10000/4900 | 100W/46W | 100/107 | 100° |
| 2993548 Ennio S300/3000/100W/66W/80/A100 | 2885 x 57 x 81 ± 1mm | 3000 | 10000/7110 | 100W/66W | 100/108 | 100° |
| 2993549 Ennio S300/3000/100W/74W/80/A100 | 2885 x 57 x 81 ± 1mm | 3000 | 10000/7620 | 100W/74W | 100/103 | 100° |
| 2993550 Ennio S300/3000/100W/100W/80/A100 | 2885 x 57 x 81 ± 1mm | 3000 | 10000/10000 | 100W/100W | 100/100 | 100° |
| 2993551 Ennio S300/3000/120W/46W/80/A100 | 2885 x 57 x 81 ± 1mm | 3000 | 11500/4900 | 120W/46W | 96/107 | 100° |
| 2993552 Ennio S300/3000/120W/66W/80/A100 | 2885 x 57 x 81 ± 1mm | 3000 | 11500/7110 | 120W/66W | 96/108 | 100° |
| 2993553 Ennio S300/3000/120W/74W/80/A100 | 2885 x 57 x 81 ± 1mm | 3000 | 11500/7620 | 120W/74W | 96/103 | 100° |
| 2993554 Ennio S300/3000/120W/100W/80/A100 | 2885 x 57 x 81 ± 1mm | 3000 | 11500/10000 | 120W/100W | 96/100 | 100° |
| 2993555 Ennio S300/3000/120W/120W/80/A100 | 2885 x 57 x 81 ± 1mm | 3000 | 11500/11500 | 120W/120W | 96/96 | 100° |
| 2993556 Ennio S300/4000/74W/46W/80/A100 | 2885 x 57 x 81 ± 1mm | 4000 | 7620/4900 | 74W/46W | 103/107 | 100° |
| 2993557 Ennio S300/4000/74W/66W/80/A100 | 2885 x 57 x 81 ± 1mm | 4000 | 7620/7110 | 74W/66W | 103/108 | 100° |
| 2993558 Ennio S300/4000/74W/74W/80/A100 | 2885 x 57 x 81 ± 1mm | 4000 | 7620/7620 | 74W/74W | 103/103 | 100° |
| 2993559 Ennio S300/4000/100W/46W/80/A100 | 2885 x 57 x 81 ± 1mm | 4000 | 10000/4900 | 100W/46W | 100/107 | 100° |
| 2993560 Ennio S300/4000/100W/66W/80/A100 | 2885 x 57 x 81 ± 1mm | 4000 | 10000/7110 | 100W/66W | 100/108 | 100° |
| 2993561 Ennio S300/4000/100W/74W/80/A100 | 2885 x 57 x 81 ± 1mm | 4000 | 10000/7620 | 100W/74W | 100/103 | 100° |
| 2993562 Ennio S300/4000/100W/100W/80/A100 | 2885 x 57 x 81 ± 1mm | 4000 | 10000/10000 | 100W/100W | 100/100 | 100° |
| 2993563 Ennio S300/4000/120W/46W/80/A100 | 2885 x 57 x 81 ± 1mm | 4000 | 11500/4900 | 120W/46W | 96/107 | 100° |
| 2993564 Ennio S300/4000/120W/66W/80/A100 | 2885 x 57 x 81 ± 1mm | 4000 | 11500/7110 | 120W/66W | 96/108 | 100° |
| 2993565 Ennio S300/4000/120W/74W/80/A100 | 2885 x 57 x 81 ± 1mm | 4000 | 11500/7620 | 120W/74W | 96/103 | 100° |
| 2993566 Ennio S300/4000/120W/100W/80/A100 | 2885 x 57 x 81 ± 1mm | 4000 | 11500/10000 | 120W/100W | 96/100 | 100° |
| 2993567 Ennio S300/4000/120W/120W/80/A100 | 2885 x 57 x 81 ± 1mm | 4000 | 11500/11500 | 120W/120W | 96/96 | 100° |
| 2993568 Ennio S300/5000/74W/46W/80/A100 | 2885 x 57 x 81 ± 1mm | 5000 | 7620/4900 | 74W/46W | 103/107 | 100° |
| 2993569 Ennio S300/5000/74W/66W/80/A100 | 2885 x 57 x 81 ± 1mm | 5000 | 7620/7110 | 74W/66W | 103/108 | 100° |
| 2993570 Ennio S300/5000/74W/74W/80/A100 | 2885 x 57 x 81 ± 1mm | 5000 | 7620/7620 | 74W/74W | 103/103 | 100° |
| 2993571 Ennio S300/5000/100W/46W/80/A100 | 2885 x 57 x 81 ± 1mm | 5000 | 10000/4900 | 100W/46W | 100/107 | 100° |
| 2993572 Ennio S300/5000/100W/66W/80/A100 | 2885 x 57 x 81 ± 1mm | 5000 | 10000/7110 | 100W/66W | 100/108 | 100° |
| 2993573 Ennio S300/5000/100W/74W/80/A100 | 2885 x 57 x 81 ± 1mm | 5000 | 10000/7620 | 100W/74W | 100/103 | 100° |
| 2993574 Ennio S300/5000/100W/100W/80/A100 | 2885 x 57 x 81 ± 1mm | 5000 | 10000/10000 | 100W/100W | 100/100 | 100° |
| 2993575 Ennio S300/5000/120W/46W/80/A100 | 2885 x 57 x 81 ± 1mm | 5000 | 11500/4900 | 120W/46W | 96/107 | 100° |
| 2993576 Ennio S300/5000/120W/66W/80/A100 | 2885 x 57 x 81 ± 1mm | 5000 | 11500/7110 | 120W/66W | 96/108 | 100° |
| 2993577 Ennio S300/5000/120W/74W/80/A100 | 2885 x 57 x 81 ± 1mm | 5000 | 11500/7620 | 120W/74W | 96/103 | 100° |
| 2993578 Ennio S300/5000/120W/100W/80/A100 | 2885 x 57 x 81 ± 1mm | 5000 | 11500/10000 | 120W/100W | 96/100 | 100° |
| 2993579 Ennio S300/5000/120W/120W/80/A100 | 2885 x 57 x 81 ± 1mm | 5000 | 11500/11500 | 120W/120W | 96/96 | 100° |
| 2993580 Ennio S300/6500/74W/46W/80/A100 | 2885 x 57 x 81 ± 1mm | 6500 | 7620/4900 | 74W/46W | 103/107 | 100° |
| 2993581 Ennio S300/6500/74W/66W/80/A100 | 2885 x 57 x 81 ± 1mm | 6500 | 7620/7110 | 74W/66W | 103/108 | 100° |
| 2993582 Ennio S300/6500/74W/74W/80/A100 | 2885 x 57 x 81 ± 1mm | 6500 | 7620/7620 | 74W/74W | 103/103 | 100° |
| 2993583 Ennio S300/6500/100W/46W/80/A100 | 2885 x 57 x 81 ± 1mm | 6500 | 10000/4900 | 100W/46W | 100/107 | 100° |
| 2993584 Ennio S300/6500/100W/66W/80/A100 | 2885 x 57 x 81 ± 1mm | 6500 | 10000/7110 | 100W/66W | 100/108 | 100° |
| 2993585 Ennio S300/6500/100W/74W/80/A100 | 2885 x 57 x 81 ± 1mm | 6500 | 10000/7620 | 100W/74W | 100/103 | 100° |
| 2993586 Ennio S300/6500/100W/100W/80/A100 | 2885 x 57 x 81 ± 1mm | 6500 | 10000/10000 | 100W/100W | 100/100 | 100° |
| 2993587 Ennio S300/6500/120W/46W/80/A100 | 2885 x 57 x 81 ± 1mm | 6500 | 11500/4900 | 120W/46W | 96/107 | 100° |
| 2993588 Ennio S300/6500/120W/66W/80/A100 | 2885 x 57 x 81 ± 1mm | 6500 | 11500/7110 | 120W/66W | 96/108 | 100° |
| 2993589 Ennio S300/6500/120W/74W/80/A100 | 2885 x 57 x 81 ± 1mm | 6500 | 11500/7620 | 120W/74W | 96/103 | 100° |
| 2993590 Ennio S300/6500/120W/100W/80/A100 | 2885 x 57 x 81 ± 1mm | 6500 | 11500/10000 | 120W/100W | 96/100 | 100° |
| 2993591 Ennio S300/6500/120W/120W/80/A100 | 2885 x 57 x 81 ± 1mm | 6500 | 11500/11500 | 120W/120W | 96/96 | 100° |

PRODUCT CUSTOMIZATION

This product has a great customization capability for combining CRI and CCT.

Below we presented possible CRI / CCT options:

| UP | DOWN |
|------------|-------------|
| 2700 CRI80 | 2400K CRI80 |
| 3000 CRI80 | 2700K CRI80 |
| 4000 CRI80 | 3000K CRI80 |
| 5000 CRI80 | 4000K CRI80 |
| 6500 CRI80 | 2700K CRI90 |
| TW | 2700K CRI90 |
| PI | 3000K CRI90 |
| | 4000K CRI90 |
| | 2700K CRI95 |
| | 3000K CRI95 |
| | 3500K CRI95 |
| | 4000K CRI95 |

For more information please send us a message using the [contact form](#) on our website.
