



Ennio UP&DOWN PC

SUSPENDED | NON-DALI EM SERIES

Ennio UP&DOWN PC is a versatile suspended luminaire that emits light both upwards and downwards. Providing indirect light on its superior side, Ennio creates a mellow ambient in the working space with reduced glare due to indirect lighting by projecting the light beam towards the ceiling.

Tunable white - Light color temperature can be adjusted to reflect the need or mood of the user. The light provided by the luminaires can be changed from warm to cold, in a range between 2700K - 6500K.

PI-LED - Combines variable white light and light of the RGB color system in one single light source. It can vary the color temperature between 2700K - 6500K along Planckian curve in the course of a day.

Ennio UP&DOWN PC has several series, determined by various add-on and controls:

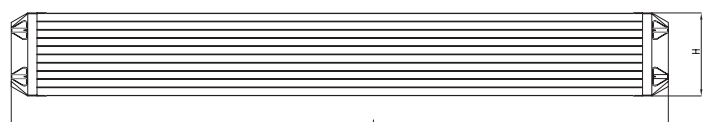
- Ennio UP&DOWN PC Non-DALI: the standard version
- **Ennio UP&DOWN PC Non-DALI EM: the standard version with emergency option (UP)**
- Ennio UP&DOWN PC DALI: with DALI controls for illumination adjustments
- Ennio UP&DOWN PC DALI EM: with DALI controls for illumination adjustments and emergency options (UP)
- Ennio UP&DOWN PC TW: the tunable white system with adjustable colour temperature
- Ennio UP&DOWN PC PI-LED - simulates the spectral quality of natural daylight over the entire day.

FEATURES & BENEFITS

- CRI 80 as standard
- Color temperatures: 3000K, 4000K, 5000K and 6500K
- Long rated life: L90/B10@50.000h
- Luminaire efficiency (UP/DOWN): 103/108 lm/w @4000K

APPLICATION

Office | Healthcare | Hospitality | DIY



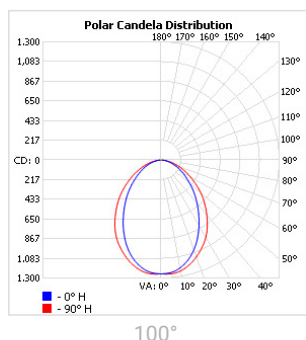
SPECIFICATIONS

| | | | | |
|--------------------------------|---------------------------------|-------------------------|--------------------------|---------------------------|
| Power consumption (UP) | 32W, 38W, 50W | 37W, 50W, 60W | 64W, 76W, 100W | 74W, 100W, 120W |
| Power consumption (DOWN) | 15W, 25W, 32W, 38W, 50W | 23W, 33W, 37W, 50W, 60W | 30W, 50W, 64W, 76W, 100W | 46W, 66W, 74W, 100W, 120W |
| Dimensions | 1201 x 57 x 81 ± 1mm | 1482 x 57 x 81 ± 1mm | 2323 x 57 x 81 ± 1mm | 2885 x 57 x 81 ± 1mm |
| Weight | 3.3 kg - 3.3 kg | 3.9 kg - 4.0 kg | 6.1 kg - 6.3 kg | 7.2 kg - 7.3 kg |
| Housing materials | Aluminum & Polycarbonate | | | |
| IK code | IK02 | | | |
| THD (at 230V, 50Hz, Full load) | <8% | | | |
| Protection class | Safety class 1 | | | |
| Operating temperature [°C] | +5°C ... +45°C / +41F ... +113F | | | |
| Operating humidity [%] | 10 ÷ 85 | | | |
| Power factor | ≥0.95 | | | |
| AC Input [Vac] | 220 - 240 VAC | | | |
| Lens angle [°] (UP/DOWN) | 100° | | | |
| Lifespan [h] | 50,000 | | | |
| Housing color | ● Anodised black | | | |
| Lumen maintenance | L90/B10@50.000h at 25°C | | | |
| IP factor | IP20 | | | |
| Control optional | - | | | |
| Warranty [years] | 5 | | | |
| Storage temperature range [°C] | +5°C ... +25°C / +41F ... +77F | | | |
| Emergency option | EM1H , EM3H | | | |
| Efficiency@4000K (UP) | 103 lm/W | | | |
| Efficiency@4000K (DOWN) | 108 lm/W | | | |

| | |
|-------------------|----------------------------|
| Light application | Standard |
| CRI | CRI 80 |
| CCT [K] | 3000K, 4000K, 5000K, 6500K |
| MacAdam | 4 |

CRI - Color rendering, CCT - Color temperature, MacAdam - Color consistency

LIGHT DISTRIBUTION



TOLERANCES**Luminous flux tolerances:** -/+ 5%**Consumption tolerance:** -/+ 5% for Non-DALI | -/+ 10% for Non-DALI & KIT EM | -/+ 10% for DALI | -/+ 15% for DALI & KIT EM**BATTERY WARRANTY****Non-DALI EM & DALI EM:** 12 months warranty**Non-DALI & DALI:** -**MAXIMUM NO. OF LUMINAIRES ON A CIRCUIT FOR DIMENSIONS 1214 X 57 X 81 ± 1MM AND 1501 X 57 X 81 ± 1MM**

| Luminaire Power(W) | Control type | Circuit Breaker Type | | | | | |
|--------------------|--------------|----------------------|----|----|----|----|----|
| | | B | | | C | | |
| | | 20 | 16 | 10 | 20 | 16 | 10 |
| < 100W | Non-DALI | 19 | 15 | 9 | 31 | 26 | 16 |
| ≥ 100W | Non-DALI | 19 | 15 | 9 | 31 | 26 | 16 |
| < 160W | DALI | 13 | 10 | 6 | 22 | 17 | 10 |

MAXIMUM NO. OF LUMINAIRES ON A CIRCUIT FOR DIMENSIONS 2362 X 57 X 81 ± 1MM AND 2936 X 57 X 81 ± 1MM

| Luminaire Power(W) | Control type | Circuit Breaker Type | | | | | |
|--------------------|--------------|----------------------|----|----|----|----|----|
| | | B | | | C | | |
| | | 20 | 16 | 10 | 20 | 16 | 10 |
| < 50W | Non-DALI | 9 | 7 | 4 | 15 | 12 | 7 |
| ≥ 50W | Non-DALI | 9 | 7 | 4 | 15 | 12 | 7 |
| < 80W | DALI | 6 | 5 | 3 | 11 | 8 | 5 |

RISK GROUP

| | |
|--------------------------------|-----|
| Standard (CRI80) | RG1 |
| FOOD (BVF, FBS, FSM) | RG1 |
| FOOD ≤35W (FZM, FSH) | RG1 |
| FOOD >35W (FZM, FSH) | RG2 |
| FAS | RG1 |
| AMB2200 | RG1 |
| ART | RG1 |
| AGI | RG1 |
| CRI90 | RG1 |
| CRI95 | RG1 |
| ENT | RG1 |

RG1

The evaluation of photobiological safety is carried out according to the standard IEC 62471:2008 ("Photobiological safety of lamps and lamp systems"). Following the definition of the risk grouping system of the mentioned IEC standard, the LEDs mounted on this family fall into the class "Low Risk (RG1 – No photobiological hazard under normal behavioral limitations)". Under real circumstances (regarding exposure time, pupils, observation distance), it is assumed that there is no endangerment to the eye from these devices. As a matter of principle, however, it should be mentioned that intense light sources have a high secondary exposure potential due to their blinding effect.

RG2

The evaluation of photobiological safety is carried out according to the standard IEC 62471:2008 ("Photobiological safety of lamps and lamp systems"). Following the definition of the risk grouping system of the mentioned IEC standard, the LEDs mounted on this family fall into the class "Moderate Risk (RG2)". Under real circumstances (regarding exposure time, pupils, observation distance), it is assumed that there is no endangerment to the eye from these devices. As a matter of principle, however, it should be mentioned that intense light sources have a high secondary exposure potential due to their blinding effect.

SKU SPECIFICATIONS

| Product Code | Dimensions (mm) | CCT (K) | Lumens (lm) (UP/DOWN) | Power (W) (UP/DOWN) | Eff. (lm/watt) (UP/DOWN) | Lens Angle (°) (UP/DOWN) |
|--|----------------------|---------|-----------------------|---------------------|--------------------------|--------------------------|
| CRI 80 | | | | | | |
| 1993592 Ennio S120/3000/32W/15W/80/A100/EM1H | 1201 x 57 x 81 ± 1mm | 3000 | 3190/1530 | 32W/15W | 100/102 | 100° |
| 1993593 Ennio S120/3000/32W/25W/80/A100/EM1H | 1201 x 57 x 81 ± 1mm | 3000 | 3190/2680 | 32W/25W | 100/108 | 100° |
| 1993594 Ennio S120/3000/32W/32W/80/A100/EM1H | 1201 x 57 x 81 ± 1mm | 3000 | 3190/3190 | 32W/32W | 100/100 | 100° |
| 1993595 Ennio S120/3000/38W/15W/80/A100/EM1H | 1201 x 57 x 81 ± 1mm | 3000 | 3810/1530 | 38W/15W | 101/102 | 100° |
| 1993596 Ennio S120/3000/38W/25W/80/A100/EM1H | 1201 x 57 x 81 ± 1mm | 3000 | 3810/2680 | 38W/25W | 101/108 | 100° |
| 1993597 Ennio S120/3000/38W/32W/80/A100/EM1H | 1201 x 57 x 81 ± 1mm | 3000 | 3810/3190 | 38W/32W | 101/100 | 100° |
| 1993598 Ennio S120/3000/38W/38W/80/A100/EM1H | 1201 x 57 x 81 ± 1mm | 3000 | 3810/3810 | 38W/38W | 101/101 | 100° |
| 1993599 Ennio S120/3000/50W/15W/80/A100/EM1H | 1201 x 57 x 81 ± 1mm | 3000 | 4620/1530 | 50W/15W | 93/102 | 100° |
| 1993600 Ennio S120/3000/50W/25W/80/A100/EM1H | 1201 x 57 x 81 ± 1mm | 3000 | 4620/2680 | 50W/25W | 93/108 | 100° |
| 1993601 Ennio S120/3000/50W/32W/80/A100/EM1H | 1201 x 57 x 81 ± 1mm | 3000 | 4620/3190 | 50W/32W | 93/100 | 100° |
| 1993602 Ennio S120/3000/50W/38W/80/A100/EM1H | 1201 x 57 x 81 ± 1mm | 3000 | 4620/3810 | 50W/38W | 93/101 | 100° |
| 1993603 Ennio S120/3000/50W/50W/80/A100/EM1H | 1201 x 57 x 81 ± 1mm | 3000 | 4620/4620 | 50W/50W | 93/93 | 100° |
| 1993604 Ennio S120/4000/32W/15W/80/A100/EM1H | 1201 x 57 x 81 ± 1mm | 4000 | 3190/1530 | 32W/15W | 100/102 | 100° |
| 1993605 Ennio S120/4000/32W/25W/80/A100/EM1H | 1201 x 57 x 81 ± 1mm | 4000 | 3190/2680 | 32W/25W | 100/108 | 100° |
| 1993606 Ennio S120/4000/32W/32W/80/A100/EM1H | 1201 x 57 x 81 ± 1mm | 4000 | 3190/3190 | 32W/32W | 100/100 | 100° |
| 1993607 Ennio S120/4000/38W/15W/80/A100/EM1H | 1201 x 57 x 81 ± 1mm | 4000 | 3810/1530 | 38W/15W | 101/102 | 100° |
| 1993608 Ennio S120/4000/38W/25W/80/A100/EM1H | 1201 x 57 x 81 ± 1mm | 4000 | 3810/2680 | 38W/25W | 101/108 | 100° |
| 1993609 Ennio S120/4000/38W/32W/80/A100/EM1H | 1201 x 57 x 81 ± 1mm | 4000 | 3810/3190 | 38W/32W | 101/100 | 100° |
| 1993610 Ennio S120/4000/38W/38W/80/A100/EM1H | 1201 x 57 x 81 ± 1mm | 4000 | 3810/3810 | 38W/38W | 101/101 | 100° |
| 1993611 Ennio S120/4000/50W/15W/80/A100/EM1H | 1201 x 57 x 81 ± 1mm | 4000 | 4620/1530 | 50W/15W | 93/102 | 100° |
| 1993612 Ennio S120/4000/50W/25W/80/A100/EM1H | 1201 x 57 x 81 ± 1mm | 4000 | 4620/2680 | 50W/25W | 93/108 | 100° |
| 1993613 Ennio S120/4000/50W/32W/80/A100/EM1H | 1201 x 57 x 81 ± 1mm | 4000 | 4620/3190 | 50W/32W | 93/100 | 100° |
| 1993614 Ennio S120/4000/50W/38W/80/A100/EM1H | 1201 x 57 x 81 ± 1mm | 4000 | 4620/3810 | 50W/38W | 93/101 | 100° |
| 1993615 Ennio S120/4000/50W/50W/80/A100/EM1H | 1201 x 57 x 81 ± 1mm | 4000 | 4620/4620 | 50W/50W | 93/93 | 100° |
| 1993616 Ennio S120/5000/32W/15W/80/A100/EM1H | 1201 x 57 x 81 ± 1mm | 5000 | 3190/1530 | 32W/15W | 100/102 | 100° |
| 1993617 Ennio S120/5000/32W/25W/80/A100/EM1H | 1201 x 57 x 81 ± 1mm | 5000 | 3190/2680 | 32W/25W | 100/108 | 100° |
| 1993618 Ennio S120/5000/32W/32W/80/A100/EM1H | 1201 x 57 x 81 ± 1mm | 5000 | 3190/3190 | 32W/32W | 100/100 | 100° |
| 1993619 Ennio S120/5000/38W/15W/80/A100/EM1H | 1201 x 57 x 81 ± 1mm | 5000 | 3810/1530 | 38W/15W | 101/102 | 100° |
| 1993620 Ennio S120/5000/38W/25W/80/A100/EM1H | 1201 x 57 x 81 ± 1mm | 5000 | 3810/2680 | 38W/25W | 101/108 | 100° |
| 1993621 Ennio S120/5000/38W/32W/80/A100/EM1H | 1201 x 57 x 81 ± 1mm | 5000 | 3810/3190 | 38W/32W | 101/100 | 100° |
| 1993622 Ennio S120/5000/38W/38W/80/A100/EM1H | 1201 x 57 x 81 ± 1mm | 5000 | 3810/3810 | 38W/38W | 101/101 | 100° |
| 1993623 Ennio S120/5000/50W/15W/80/A100/EM1H | 1201 x 57 x 81 ± 1mm | 5000 | 4620/1530 | 50W/15W | 93/102 | 100° |
| 1993624 Ennio S120/5000/50W/25W/80/A100/EM1H | 1201 x 57 x 81 ± 1mm | 5000 | 4620/2680 | 50W/25W | 93/108 | 100° |
| 1993625 Ennio S120/5000/50W/32W/80/A100/EM1H | 1201 x 57 x 81 ± 1mm | 5000 | 4620/3190 | 50W/32W | 93/100 | 100° |
| 1993626 Ennio S120/5000/50W/38W/80/A100/EM1H | 1201 x 57 x 81 ± 1mm | 5000 | 4620/3810 | 50W/38W | 93/101 | 100° |
| 1993627 Ennio S120/5000/50W/50W/80/A100/EM1H | 1201 x 57 x 81 ± 1mm | 5000 | 4620/4620 | 50W/50W | 93/93 | 100° |
| 1993628 Ennio S120/6500/32W/15W/80/A100/EM1H | 1201 x 57 x 81 ± 1mm | 6500 | 3190/1530 | 32W/15W | 100/102 | 100° |
| 1993629 Ennio S120/6500/32W/25W/80/A100/EM1H | 1201 x 57 x 81 ± 1mm | 6500 | 3190/2680 | 32W/25W | 100/108 | 100° |
| 1993630 Ennio S120/6500/32W/32W/80/A100/EM1H | 1201 x 57 x 81 ± 1mm | 6500 | 3190/3190 | 32W/32W | 100/100 | 100° |
| 1993631 Ennio S120/6500/38W/15W/80/A100/EM1H | 1201 x 57 x 81 ± 1mm | 6500 | 3810/1530 | 38W/15W | 101/102 | 100° |
| 1993632 Ennio S120/6500/38W/25W/80/A100/EM1H | 1201 x 57 x 81 ± 1mm | 6500 | 3810/2680 | 38W/25W | 101/108 | 100° |
| 1993633 Ennio S120/6500/38W/32W/80/A100/EM1H | 1201 x 57 x 81 ± 1mm | 6500 | 3810/3190 | 38W/32W | 101/100 | 100° |
| 1993634 Ennio S120/6500/38W/38W/80/A100/EM1H | 1201 x 57 x 81 ± 1mm | 6500 | 3810/3810 | 38W/38W | 101/101 | 100° |
| 1993635 Ennio S120/6500/50W/15W/80/A100/EM1H | 1201 x 57 x 81 ± 1mm | 6500 | 4620/1530 | 50W/15W | 93/102 | 100° |
| 1993636 Ennio S120/6500/50W/25W/80/A100/EM1H | 1201 x 57 x 81 ± 1mm | 6500 | 4620/2680 | 50W/25W | 93/108 | 100° |
| 1993637 Ennio S120/6500/50W/32W/80/A100/EM1H | 1201 x 57 x 81 ± 1mm | 6500 | 4620/3190 | 50W/32W | 93/100 | 100° |
| 1993638 Ennio S120/6500/50W/38W/80/A100/EM1H | 1201 x 57 x 81 ± 1mm | 6500 | 4620/3810 | 50W/38W | 93/101 | 100° |
| 1993639 Ennio S120/6500/50W/50W/80/A100/EM1H | 1201 x 57 x 81 ± 1mm | 6500 | 4620/4620 | 50W/50W | 93/93 | 100° |

SKU SPECIFICATIONS

| Product Code | Dimensions (mm) | CCT (K) | Lumens (lm) (UP/DOWN) | Power (W) (UP/DOWN) | Eff. (lm/watt) (UP/DOWN) | Lens Angle (°) (UP/DOWN) |
|--|----------------------|---------|-----------------------|---------------------|--------------------------|--------------------------|
| CRI 80 | | | | | | |
| 1993640 Ennio S150/3000/37W/23W/80/A100/EM1H | 1482 x 57 x 81 ± 1mm | 3000 | 3810/2450 | 37W/23W | 103/107 | 100° |
| 1993641 Ennio S150/3000/37W/33W/80/A100/EM1H | 1482 x 57 x 81 ± 1mm | 3000 | 3810/3555 | 37W/33W | 103/108 | 100° |
| 1993642 Ennio S150/3000/37W/37W/80/A100/EM1H | 1482 x 57 x 81 ± 1mm | 3000 | 3810/3810 | 37W/37W | 103/103 | 100° |
| 1993643 Ennio S150/3000/50W/23W/80/A100/EM1H | 1482 x 57 x 81 ± 1mm | 3000 | 5000/2450 | 50W/23W | 100/107 | 100° |
| 1993644 Ennio S150/3000/50W/33W/80/A100/EM1H | 1482 x 57 x 81 ± 1mm | 3000 | 5000/3555 | 50W/33W | 100/108 | 100° |
| 1993645 Ennio S150/3000/50W/37W/80/A100/EM1H | 1482 x 57 x 81 ± 1mm | 3000 | 5000/3810 | 50W/37W | 100/103 | 100° |
| 1993646 Ennio S150/3000/50W/50W/80/A100/EM1H | 1482 x 57 x 81 ± 1mm | 3000 | 5000/5000 | 50W/50W | 100/100 | 100° |
| 1993647 Ennio S150/3000/60W/23W/80/A100/EM1H | 1482 x 57 x 81 ± 1mm | 3000 | 5750/2450 | 60W/23W | 96/107 | 100° |
| 1993648 Ennio S150/3000/60W/33W/80/A100/EM1H | 1482 x 57 x 81 ± 1mm | 3000 | 5750/3555 | 60W/33W | 96/108 | 100° |
| 1993649 Ennio S150/3000/60W/37W/80/A100/EM1H | 1482 x 57 x 81 ± 1mm | 3000 | 5750/3810 | 60W/37W | 96/103 | 100° |
| 1993650 Ennio S150/3000/60W/50W/80/A100/EM1H | 1482 x 57 x 81 ± 1mm | 3000 | 5750/5000 | 60W/50W | 96/100 | 100° |
| 1993651 Ennio S150/3000/60W/60W/80/A100/EM1H | 1482 x 57 x 81 ± 1mm | 3000 | 5750/5750 | 60W/60W | 96/96 | 100° |
| 1993652 Ennio S150/4000/37W/23W/80/A100/EM1H | 1482 x 57 x 81 ± 1mm | 4000 | 3810/2450 | 37W/23W | 103/107 | 100° |
| 1993653 Ennio S150/4000/37W/33W/80/A100/EM1H | 1482 x 57 x 81 ± 1mm | 4000 | 3810/3555 | 37W/33W | 103/108 | 100° |
| 1993654 Ennio S150/4000/37W/37W/80/A100/EM1H | 1482 x 57 x 81 ± 1mm | 4000 | 3810/3810 | 37W/37W | 103/103 | 100° |
| 1993655 Ennio S150/4000/50W/23W/80/A100/EM1H | 1482 x 57 x 81 ± 1mm | 4000 | 5000/2450 | 50W/23W | 100/107 | 100° |
| 1993656 Ennio S150/4000/50W/33W/80/A100/EM1H | 1482 x 57 x 81 ± 1mm | 4000 | 5000/3555 | 50W/33W | 100/108 | 100° |
| 1993657 Ennio S150/4000/50W/37W/80/A100/EM1H | 1482 x 57 x 81 ± 1mm | 4000 | 5000/3810 | 50W/37W | 100/103 | 100° |
| 1993658 Ennio S150/4000/50W/50W/80/A100/EM1H | 1482 x 57 x 81 ± 1mm | 4000 | 5000/5000 | 50W/50W | 100/100 | 100° |
| 1993659 Ennio S150/4000/60W/23W/80/A100/EM1H | 1482 x 57 x 81 ± 1mm | 4000 | 5750/2450 | 60W/23W | 96/107 | 100° |
| 1993660 Ennio S150/4000/60W/33W/80/A100/EM1H | 1482 x 57 x 81 ± 1mm | 4000 | 5750/3555 | 60W/33W | 96/108 | 100° |
| 1993661 Ennio S150/4000/60W/37W/80/A100/EM1H | 1482 x 57 x 81 ± 1mm | 4000 | 5750/3810 | 60W/37W | 96/103 | 100° |
| 1993662 Ennio S150/4000/60W/50W/80/A100/EM1H | 1482 x 57 x 81 ± 1mm | 4000 | 5750/5000 | 60W/50W | 96/100 | 100° |
| 1993663 Ennio S150/4000/60W/60W/80/A100/EM1H | 1482 x 57 x 81 ± 1mm | 4000 | 5750/5750 | 60W/60W | 96/96 | 100° |
| 1993664 Ennio S150/5000/37W/23W/80/A100/EM1H | 1482 x 57 x 81 ± 1mm | 5000 | 3810/2450 | 37W/23W | 103/107 | 100° |
| 1993665 Ennio S150/5000/37W/33W/80/A100/EM1H | 1482 x 57 x 81 ± 1mm | 5000 | 3810/3555 | 37W/33W | 103/108 | 100° |
| 1993666 Ennio S150/5000/37W/37W/80/A100/EM1H | 1482 x 57 x 81 ± 1mm | 5000 | 3810/3810 | 37W/37W | 103/103 | 100° |
| 1993667 Ennio S150/5000/50W/23W/80/A100/EM1H | 1482 x 57 x 81 ± 1mm | 5000 | 5000/2450 | 50W/23W | 100/107 | 100° |
| 1993668 Ennio S150/5000/50W/33W/80/A100/EM1H | 1482 x 57 x 81 ± 1mm | 5000 | 5000/3555 | 50W/33W | 100/108 | 100° |
| 1993669 Ennio S150/5000/50W/37W/80/A100/EM1H | 1482 x 57 x 81 ± 1mm | 5000 | 5000/3810 | 50W/37W | 100/103 | 100° |
| 1993670 Ennio S150/5000/50W/50W/80/A100/EM1H | 1482 x 57 x 81 ± 1mm | 5000 | 5000/5000 | 50W/50W | 100/100 | 100° |
| 1993671 Ennio S150/5000/60W/23W/80/A100/EM1H | 1482 x 57 x 81 ± 1mm | 5000 | 5750/2450 | 60W/23W | 96/107 | 100° |
| 1993672 Ennio S150/5000/60W/33W/80/A100/EM1H | 1482 x 57 x 81 ± 1mm | 5000 | 5750/3555 | 60W/33W | 96/108 | 100° |
| 1993673 Ennio S150/5000/60W/37W/80/A100/EM1H | 1482 x 57 x 81 ± 1mm | 5000 | 5750/3810 | 60W/37W | 96/103 | 100° |
| 1993674 Ennio S150/5000/60W/50W/80/A100/EM1H | 1482 x 57 x 81 ± 1mm | 5000 | 5750/5000 | 60W/50W | 96/100 | 100° |
| 1993675 Ennio S150/5000/60W/60W/80/A100/EM1H | 1482 x 57 x 81 ± 1mm | 5000 | 5750/5750 | 60W/60W | 96/96 | 100° |
| 1993676 Ennio S150/6500/37W/23W/80/A100/EM1H | 1482 x 57 x 81 ± 1mm | 6500 | 3810/2450 | 37W/23W | 103/107 | 100° |
| 1993677 Ennio S150/6500/37W/33W/80/A100/EM1H | 1482 x 57 x 81 ± 1mm | 6500 | 3810/3555 | 37W/33W | 103/108 | 100° |
| 1993678 Ennio S150/6500/37W/37W/80/A100/EM1H | 1482 x 57 x 81 ± 1mm | 6500 | 3810/3810 | 37W/37W | 103/103 | 100° |
| 1993679 Ennio S150/6500/50W/23W/80/A100/EM1H | 1482 x 57 x 81 ± 1mm | 6500 | 5000/2450 | 50W/23W | 100/107 | 100° |
| 1993680 Ennio S150/6500/50W/33W/80/A100/EM1H | 1482 x 57 x 81 ± 1mm | 6500 | 5000/3555 | 50W/33W | 100/108 | 100° |
| 1993681 Ennio S150/6500/50W/37W/80/A100/EM1H | 1482 x 57 x 81 ± 1mm | 6500 | 5000/3810 | 50W/37W | 100/103 | 100° |
| 1993682 Ennio S150/6500/50W/50W/80/A100/EM1H | 1482 x 57 x 81 ± 1mm | 6500 | 5000/5000 | 50W/50W | 100/100 | 100° |
| 1993683 Ennio S150/6500/60W/23W/80/A100/EM1H | 1482 x 57 x 81 ± 1mm | 6500 | 5750/2450 | 60W/23W | 96/107 | 100° |
| 1993684 Ennio S150/6500/60W/33W/80/A100/EM1H | 1482 x 57 x 81 ± 1mm | 6500 | 5750/3555 | 60W/33W | 96/108 | 100° |
| 1993685 Ennio S150/6500/60W/37W/80/A100/EM1H | 1482 x 57 x 81 ± 1mm | 6500 | 5750/3810 | 60W/37W | 96/103 | 100° |
| 1993686 Ennio S150/6500/60W/50W/80/A100/EM1H | 1482 x 57 x 81 ± 1mm | 6500 | 5750/5000 | 60W/50W | 96/100 | 100° |
| 1993687 Ennio S150/6500/60W/60W/80/A100/EM1H | 1482 x 57 x 81 ± 1mm | 6500 | 5750/5750 | 60W/60W | 96/96 | 100° |

SKU SPECIFICATIONS

| Product Code | Dimensions (mm) | CCT (K) | Lumens (lm) (UP/DOWN) | Power (W) (UP/DOWN) | Eff. (lm/watt) (UP/DOWN) | Lens Angle (°) (UP/DOWN) |
|--|----------------------|---------|-----------------------|---------------------|--------------------------|--------------------------|
| CRI 80 | | | | | | |
| 1993688 Ennio S240/3000/64W/30W/80/A100/EM1H | 2323 x 57 x 81 ± 1mm | 3000 | 6380/3060 | 64W/30W | 100/102 | 100° |
| 1993689 Ennio S240/3000/64W/50W/80/A100/EM1H | 2323 x 57 x 81 ± 1mm | 3000 | 6380/5360 | 64W/50W | 100/108 | 100° |
| 1993690 Ennio S240/3000/64W/64W/80/A100/EM1H | 2323 x 57 x 81 ± 1mm | 3000 | 6380/6380 | 64W/64W | 100/100 | 100° |
| 1993691 Ennio S240/3000/76W/30W/80/A100/EM1H | 2323 x 57 x 81 ± 1mm | 3000 | 7620/3060 | 76W/30W | 101/102 | 100° |
| 1993692 Ennio S240/3000/76W/50W/80/A100/EM1H | 2323 x 57 x 81 ± 1mm | 3000 | 7620/5360 | 76W/50W | 101/108 | 100° |
| 1993693 Ennio S240/3000/76W/64W/80/A100/EM1H | 2323 x 57 x 81 ± 1mm | 3000 | 7620/6380 | 76W/64W | 101/100 | 100° |
| 1993694 Ennio S240/3000/76W/76W/80/A100/EM1H | 2323 x 57 x 81 ± 1mm | 3000 | 7620/7620 | 76W/76W | 101/101 | 100° |
| 1993695 Ennio S240/3000/100W/30W/80/A100/EM1H | 2323 x 57 x 81 ± 1mm | 3000 | 9240/3060 | 100W/30W | 93/102 | 100° |
| 1993696 Ennio S240/3000/100W/50W/80/A100/EM1H | 2323 x 57 x 81 ± 1mm | 3000 | 9240/5360 | 100W/50W | 93/108 | 100° |
| 1993697 Ennio S240/3000/100W/64W/80/A100/EM1H | 2323 x 57 x 81 ± 1mm | 3000 | 9240/6380 | 100W/64W | 93/100 | 100° |
| 1993698 Ennio S240/3000/100W/76W/80/A100/EM1H | 2323 x 57 x 81 ± 1mm | 3000 | 9240/7620 | 100W/76W | 93/101 | 100° |
| 1993699 Ennio S240/3000/100W/100W/80/A100/EM1H | 2323 x 57 x 81 ± 1mm | 3000 | 9240/9240 | 100W/100W | 93/93 | 100° |
| 1993700 Ennio S240/4000/64W/30W/80/A100/EM1H | 2323 x 57 x 81 ± 1mm | 4000 | 6380/3060 | 64W/30W | 100/102 | 100° |
| 1993701 Ennio S240/4000/64W/50W/80/A100/EM1H | 2323 x 57 x 81 ± 1mm | 4000 | 6380/5360 | 64W/50W | 100/108 | 100° |
| 1993702 Ennio S240/4000/64W/64W/80/A100/EM1H | 2323 x 57 x 81 ± 1mm | 4000 | 6380/6380 | 64W/64W | 100/100 | 100° |
| 1993703 Ennio S240/4000/76W/30W/80/A100/EM1H | 2323 x 57 x 81 ± 1mm | 4000 | 7620/3060 | 76W/30W | 101/102 | 100° |
| 1993704 Ennio S240/4000/76W/50W/80/A100/EM1H | 2323 x 57 x 81 ± 1mm | 4000 | 7620/5360 | 76W/50W | 101/108 | 100° |
| 1993705 Ennio S240/4000/76W/64W/80/A100/EM1H | 2323 x 57 x 81 ± 1mm | 4000 | 7620/6380 | 76W/64W | 101/100 | 100° |
| 1993706 Ennio S240/4000/76W/76W/80/A100/EM1H | 2323 x 57 x 81 ± 1mm | 4000 | 7620/7620 | 76W/76W | 101/101 | 100° |
| 1993707 Ennio S240/4000/100W/30W/80/A100/EM1H | 2323 x 57 x 81 ± 1mm | 4000 | 9240/3060 | 100W/30W | 93/102 | 100° |
| 1993708 Ennio S240/4000/100W/50W/80/A100/EM1H | 2323 x 57 x 81 ± 1mm | 4000 | 9240/5360 | 100W/50W | 93/108 | 100° |
| 1993709 Ennio S240/4000/100W/64W/80/A100/EM1H | 2323 x 57 x 81 ± 1mm | 4000 | 9240/6380 | 100W/64W | 93/100 | 100° |
| 1993710 Ennio S240/4000/100W/76W/80/A100/EM1H | 2323 x 57 x 81 ± 1mm | 4000 | 9240/7620 | 100W/76W | 93/101 | 100° |
| 1993711 Ennio S240/4000/100W/100W/80/A100/EM1H | 2323 x 57 x 81 ± 1mm | 4000 | 9240/9240 | 100W/100W | 93/93 | 100° |
| 1993712 Ennio S240/5000/64W/30W/80/A100/EM1H | 2323 x 57 x 81 ± 1mm | 5000 | 6380/3060 | 64W/30W | 100/102 | 100° |
| 1993713 Ennio S240/5000/64W/50W/80/A100/EM1H | 2323 x 57 x 81 ± 1mm | 5000 | 6380/5360 | 64W/50W | 100/108 | 100° |
| 1993714 Ennio S240/5000/64W/64W/80/A100/EM1H | 2323 x 57 x 81 ± 1mm | 5000 | 6380/6380 | 64W/64W | 100/100 | 100° |
| 1993715 Ennio S240/5000/76W/30W/80/A100/EM1H | 2323 x 57 x 81 ± 1mm | 5000 | 7620/3060 | 76W/30W | 101/102 | 100° |
| 1993716 Ennio S240/5000/76W/50W/80/A100/EM1H | 2323 x 57 x 81 ± 1mm | 5000 | 7620/5360 | 76W/50W | 101/108 | 100° |
| 1993717 Ennio S240/5000/76W/64W/80/A100/EM1H | 2323 x 57 x 81 ± 1mm | 5000 | 7620/6380 | 76W/64W | 101/100 | 100° |
| 1993718 Ennio S240/5000/76W/76W/80/A100/EM1H | 2323 x 57 x 81 ± 1mm | 5000 | 7620/7620 | 76W/76W | 101/101 | 100° |
| 1993719 Ennio S240/5000/100W/30W/80/A100/EM1H | 2323 x 57 x 81 ± 1mm | 5000 | 9240/3060 | 100W/30W | 93/102 | 100° |
| 1993720 Ennio S240/5000/100W/50W/80/A100/EM1H | 2323 x 57 x 81 ± 1mm | 5000 | 9240/5360 | 100W/50W | 93/108 | 100° |
| 1993721 Ennio S240/5000/100W/64W/80/A100/EM1H | 2323 x 57 x 81 ± 1mm | 5000 | 9240/6380 | 100W/64W | 93/100 | 100° |
| 1993722 Ennio S240/5000/100W/76W/80/A100/EM1H | 2323 x 57 x 81 ± 1mm | 5000 | 9240/7620 | 100W/76W | 93/101 | 100° |
| 1993723 Ennio S240/5000/100W/100W/80/A100/EM1H | 2323 x 57 x 81 ± 1mm | 5000 | 9240/9240 | 100W/100W | 93/93 | 100° |
| 1993724 Ennio S240/6500/64W/30W/80/A100/EM1H | 2323 x 57 x 81 ± 1mm | 6500 | 6380/3060 | 64W/30W | 100/102 | 100° |
| 1993725 Ennio S240/6500/64W/50W/80/A100/EM1H | 2323 x 57 x 81 ± 1mm | 6500 | 6380/5360 | 64W/50W | 100/108 | 100° |
| 1993726 Ennio S240/6500/64W/64W/80/A100/EM1H | 2323 x 57 x 81 ± 1mm | 6500 | 6380/6380 | 64W/64W | 100/100 | 100° |
| 1993727 Ennio S240/6500/76W/30W/80/A100/EM1H | 2323 x 57 x 81 ± 1mm | 6500 | 7620/3060 | 76W/30W | 101/102 | 100° |
| 1993728 Ennio S240/6500/76W/50W/80/A100/EM1H | 2323 x 57 x 81 ± 1mm | 6500 | 7620/5360 | 76W/50W | 101/108 | 100° |
| 1993729 Ennio S240/6500/76W/64W/80/A100/EM1H | 2323 x 57 x 81 ± 1mm | 6500 | 7620/6380 | 76W/64W | 101/100 | 100° |
| 1993730 Ennio S240/6500/76W/76W/80/A100/EM1H | 2323 x 57 x 81 ± 1mm | 6500 | 7620/7620 | 76W/76W | 101/101 | 100° |
| 1993731 Ennio S240/6500/100W/30W/80/A100/EM1H | 2323 x 57 x 81 ± 1mm | 6500 | 9240/3060 | 100W/30W | 93/102 | 100° |
| 1993732 Ennio S240/6500/100W/50W/80/A100/EM1H | 2323 x 57 x 81 ± 1mm | 6500 | 9240/5360 | 100W/50W | 93/108 | 100° |
| 1993733 Ennio S240/6500/100W/64W/80/A100/EM1H | 2323 x 57 x 81 ± 1mm | 6500 | 9240/6380 | 100W/64W | 93/100 | 100° |
| 1993734 Ennio S240/6500/100W/76W/80/A100/EM1H | 2323 x 57 x 81 ± 1mm | 6500 | 9240/7620 | 100W/76W | 93/101 | 100° |
| 1993735 Ennio S240/6500/100W/100W/80/A100/EM1H | 2323 x 57 x 81 ± 1mm | 6500 | 9240/9240 | 100W/100W | 93/93 | 100° |

SKU SPECIFICATIONS

| Product Code | Dimensions (mm) | CCT (K) | Lumens (lm) (UP/DOWN) | Power (W) (UP/DOWN) | Eff. (lm/watt) (UP/DOWN) | Lens Angle (°) (UP/DOWN) |
|--|----------------------|---------|-----------------------|---------------------|--------------------------|--------------------------|
| CRI 80 | | | | | | |
| 1993736 Ennio S300/3000/74W/46W/80/A100/EM1H | 2885 x 57 x 81 ± 1mm | 3000 | 7620/4900 | 74W/46W | 103/107 | 100° |
| 1993737 Ennio S300/3000/74W/66W/80/A100/EM1H | 2885 x 57 x 81 ± 1mm | 3000 | 7620/7110 | 74W/66W | 103/108 | 100° |
| 1993738 Ennio S300/3000/74W/74W/80/A100/EM1H | 2885 x 57 x 81 ± 1mm | 3000 | 7620/7620 | 74W/74W | 103/103 | 100° |
| 1993739 Ennio S300/3000/100W/46W/80/A100/EM1H | 2885 x 57 x 81 ± 1mm | 3000 | 10000/4900 | 100W/46W | 100/107 | 100° |
| 1993740 Ennio S300/3000/100W/66W/80/A100/EM1H | 2885 x 57 x 81 ± 1mm | 3000 | 10000/7110 | 100W/66W | 100/108 | 100° |
| 1993741 Ennio S300/3000/100W/74W/80/A100/EM1H | 2885 x 57 x 81 ± 1mm | 3000 | 10000/7620 | 100W/74W | 100/103 | 100° |
| 1993742 Ennio S300/3000/100W/100W/80/A100/EM1H | 2885 x 57 x 81 ± 1mm | 3000 | 10000/10000 | 100W/100W | 100/100 | 100° |
| 1993743 Ennio S300/3000/120W/46W/80/A100/EM1H | 2885 x 57 x 81 ± 1mm | 3000 | 11500/4900 | 120W/46W | 96/107 | 100° |
| 1993744 Ennio S300/3000/120W/66W/80/A100/EM1H | 2885 x 57 x 81 ± 1mm | 3000 | 11500/7110 | 120W/66W | 96/108 | 100° |
| 1993745 Ennio S300/3000/120W/74W/80/A100/EM1H | 2885 x 57 x 81 ± 1mm | 3000 | 11500/7620 | 120W/74W | 96/103 | 100° |
| 1993746 Ennio S300/3000/120W/100W/80/A100/EM1H | 2885 x 57 x 81 ± 1mm | 3000 | 11500/10000 | 120W/100W | 96/100 | 100° |
| 1993747 Ennio S300/3000/120W/120W/80/A100/EM1H | 2885 x 57 x 81 ± 1mm | 3000 | 11500/11500 | 120W/120W | 96/96 | 100° |
| 1993748 Ennio S300/4000/74W/46W/80/A100/EM1H | 2885 x 57 x 81 ± 1mm | 4000 | 7620/4900 | 74W/46W | 103/107 | 100° |
| 1993749 Ennio S300/4000/74W/66W/80/A100/EM1H | 2885 x 57 x 81 ± 1mm | 4000 | 7620/7110 | 74W/66W | 103/108 | 100° |
| 1993750 Ennio S300/4000/74W/74W/80/A100/EM1H | 2885 x 57 x 81 ± 1mm | 4000 | 7620/7620 | 74W/74W | 103/103 | 100° |
| 1993751 Ennio S300/4000/100W/46W/80/A100/EM1H | 2885 x 57 x 81 ± 1mm | 4000 | 10000/4900 | 100W/46W | 100/107 | 100° |
| 1993752 Ennio S300/4000/100W/66W/80/A100/EM1H | 2885 x 57 x 81 ± 1mm | 4000 | 10000/7110 | 100W/66W | 100/108 | 100° |
| 1993753 Ennio S300/4000/100W/74W/80/A100/EM1H | 2885 x 57 x 81 ± 1mm | 4000 | 10000/7620 | 100W/74W | 100/103 | 100° |
| 1993754 Ennio S300/4000/100W/100W/80/A100/EM1H | 2885 x 57 x 81 ± 1mm | 4000 | 10000/10000 | 100W/100W | 100/100 | 100° |
| 1993755 Ennio S300/4000/120W/46W/80/A100/EM1H | 2885 x 57 x 81 ± 1mm | 4000 | 11500/4900 | 120W/46W | 96/107 | 100° |
| 1993756 Ennio S300/4000/120W/66W/80/A100/EM1H | 2885 x 57 x 81 ± 1mm | 4000 | 11500/7110 | 120W/66W | 96/108 | 100° |
| 1993757 Ennio S300/4000/120W/74W/80/A100/EM1H | 2885 x 57 x 81 ± 1mm | 4000 | 11500/7620 | 120W/74W | 96/103 | 100° |
| 1993758 Ennio S300/4000/120W/100W/80/A100/EM1H | 2885 x 57 x 81 ± 1mm | 4000 | 11500/10000 | 120W/100W | 96/100 | 100° |
| 1993759 Ennio S300/4000/120W/120W/80/A100/EM1H | 2885 x 57 x 81 ± 1mm | 4000 | 11500/11500 | 120W/120W | 96/96 | 100° |
| 1993760 Ennio S300/5000/74W/46W/80/A100/EM1H | 2885 x 57 x 81 ± 1mm | 5000 | 7620/4900 | 74W/46W | 103/107 | 100° |
| 1993761 Ennio S300/5000/74W/66W/80/A100/EM1H | 2885 x 57 x 81 ± 1mm | 5000 | 7620/7110 | 74W/66W | 103/108 | 100° |
| 1993762 Ennio S300/5000/74W/74W/80/A100/EM1H | 2885 x 57 x 81 ± 1mm | 5000 | 7620/7620 | 74W/74W | 103/103 | 100° |
| 1993763 Ennio S300/5000/100W/46W/80/A100/EM1H | 2885 x 57 x 81 ± 1mm | 5000 | 10000/4900 | 100W/46W | 100/107 | 100° |
| 1993764 Ennio S300/5000/100W/66W/80/A100/EM1H | 2885 x 57 x 81 ± 1mm | 5000 | 10000/7110 | 100W/66W | 100/108 | 100° |
| 1993765 Ennio S300/5000/100W/74W/80/A100/EM1H | 2885 x 57 x 81 ± 1mm | 5000 | 10000/7620 | 100W/74W | 100/103 | 100° |
| 1993766 Ennio S300/5000/100W/100W/80/A100/EM1H | 2885 x 57 x 81 ± 1mm | 5000 | 10000/10000 | 100W/100W | 100/100 | 100° |
| 1993767 Ennio S300/5000/120W/46W/80/A100/EM1H | 2885 x 57 x 81 ± 1mm | 5000 | 11500/4900 | 120W/46W | 96/107 | 100° |
| 1993768 Ennio S300/5000/120W/66W/80/A100/EM1H | 2885 x 57 x 81 ± 1mm | 5000 | 11500/7110 | 120W/66W | 96/108 | 100° |
| 1993769 Ennio S300/5000/120W/74W/80/A100/EM1H | 2885 x 57 x 81 ± 1mm | 5000 | 11500/7620 | 120W/74W | 96/103 | 100° |
| 1993770 Ennio S300/5000/120W/100W/80/A100/EM1H | 2885 x 57 x 81 ± 1mm | 5000 | 11500/10000 | 120W/100W | 96/100 | 100° |
| 1993771 Ennio S300/5000/120W/120W/80/A100/EM1H | 2885 x 57 x 81 ± 1mm | 5000 | 11500/11500 | 120W/120W | 96/96 | 100° |
| 1993772 Ennio S300/6500/74W/46W/80/A100/EM1H | 2885 x 57 x 81 ± 1mm | 6500 | 7620/4900 | 74W/46W | 103/107 | 100° |
| 1993773 Ennio S300/6500/74W/66W/80/A100/EM1H | 2885 x 57 x 81 ± 1mm | 6500 | 7620/7110 | 74W/66W | 103/108 | 100° |
| 1993774 Ennio S300/6500/74W/74W/80/A100/EM1H | 2885 x 57 x 81 ± 1mm | 6500 | 7620/7620 | 74W/74W | 103/103 | 100° |
| 1993775 Ennio S300/6500/100W/46W/80/A100/EM1H | 2885 x 57 x 81 ± 1mm | 6500 | 10000/4900 | 100W/46W | 100/107 | 100° |
| 1993776 Ennio S300/6500/100W/66W/80/A100/EM1H | 2885 x 57 x 81 ± 1mm | 6500 | 10000/7110 | 100W/66W | 100/108 | 100° |
| 1993777 Ennio S300/6500/100W/74W/80/A100/EM1H | 2885 x 57 x 81 ± 1mm | 6500 | 10000/7620 | 100W/74W | 100/103 | 100° |
| 1993778 Ennio S300/6500/100W/100W/80/A100/EM1H | 2885 x 57 x 81 ± 1mm | 6500 | 10000/10000 | 100W/100W | 100/100 | 100° |
| 1993779 Ennio S300/6500/120W/46W/80/A100/EM1H | 2885 x 57 x 81 ± 1mm | 6500 | 11500/4900 | 120W/46W | 96/107 | 100° |
| 1993780 Ennio S300/6500/120W/66W/80/A100/EM1H | 2885 x 57 x 81 ± 1mm | 6500 | 11500/7110 | 120W/66W | 96/108 | 100° |
| 1993781 Ennio S300/6500/120W/74W/80/A100/EM1H | 2885 x 57 x 81 ± 1mm | 6500 | 11500/7620 | 120W/74W | 96/103 | 100° |
| 1993782 Ennio S300/6500/120W/100W/80/A100/EM1H | 2885 x 57 x 81 ± 1mm | 6500 | 11500/10000 | 120W/100W | 96/100 | 100° |
| 1993783 Ennio S300/6500/120W/120W/80/A100/EM1H | 2885 x 57 x 81 ± 1mm | 6500 | 11500/11500 | 120W/120W | 96/96 | 100° |

SKU SPECIFICATIONS

| Product Code | Dimensions (mm) | CCT (K) | Lumens (lm) (UP/DOWN) | Power (W) (UP/DOWN) | Eff. (lm/watt) (UP/DOWN) | Lens Angle (°) (UP/DOWN) |
|--|----------------------|---------|-----------------------|---------------------|--------------------------|--------------------------|
| CRI 80 | | | | | | |
| 1993784 Ennio S120/3000/32W/15W/80/A100/EM3H | 1201 x 57 x 81 ± 1mm | 3000 | 3190/1530 | 32W/15W | 100/102 | 100° |
| 1993785 Ennio S120/3000/32W/25W/80/A100/EM3H | 1201 x 57 x 81 ± 1mm | 3000 | 3190/2680 | 32W/25W | 100/108 | 100° |
| 1993786 Ennio S120/3000/32W/32W/80/A100/EM3H | 1201 x 57 x 81 ± 1mm | 3000 | 3190/3190 | 32W/32W | 100/100 | 100° |
| 1993787 Ennio S120/3000/38W/15W/80/A100/EM3H | 1201 x 57 x 81 ± 1mm | 3000 | 3810/1530 | 38W/15W | 101/102 | 100° |
| 1993788 Ennio S120/3000/38W/25W/80/A100/EM3H | 1201 x 57 x 81 ± 1mm | 3000 | 3810/2680 | 38W/25W | 101/108 | 100° |
| 1993789 Ennio S120/3000/38W/32W/80/A100/EM3H | 1201 x 57 x 81 ± 1mm | 3000 | 3810/3190 | 38W/32W | 101/100 | 100° |
| 1993790 Ennio S120/3000/38W/38W/80/A100/EM3H | 1201 x 57 x 81 ± 1mm | 3000 | 3810/3810 | 38W/38W | 101/101 | 100° |
| 1993791 Ennio S120/3000/50W/15W/80/A100/EM3H | 1201 x 57 x 81 ± 1mm | 3000 | 4620/1530 | 50W/15W | 93/102 | 100° |
| 1993792 Ennio S120/3000/50W/25W/80/A100/EM3H | 1201 x 57 x 81 ± 1mm | 3000 | 4620/2680 | 50W/25W | 93/108 | 100° |
| 1993793 Ennio S120/3000/50W/32W/80/A100/EM3H | 1201 x 57 x 81 ± 1mm | 3000 | 4620/3190 | 50W/32W | 93/100 | 100° |
| 1993794 Ennio S120/3000/50W/38W/80/A100/EM3H | 1201 x 57 x 81 ± 1mm | 3000 | 4620/3810 | 50W/38W | 93/101 | 100° |
| 1993795 Ennio S120/3000/50W/50W/80/A100/EM3H | 1201 x 57 x 81 ± 1mm | 3000 | 4620/4620 | 50W/50W | 93/93 | 100° |
| 1993796 Ennio S120/4000/32W/15W/80/A100/EM3H | 1201 x 57 x 81 ± 1mm | 4000 | 3190/1530 | 32W/15W | 100/102 | 100° |
| 1993797 Ennio S120/4000/32W/25W/80/A100/EM3H | 1201 x 57 x 81 ± 1mm | 4000 | 3190/2680 | 32W/25W | 100/108 | 100° |
| 1993798 Ennio S120/4000/32W/32W/80/A100/EM3H | 1201 x 57 x 81 ± 1mm | 4000 | 3190/3190 | 32W/32W | 100/100 | 100° |
| 1993799 Ennio S120/4000/38W/15W/80/A100/EM3H | 1201 x 57 x 81 ± 1mm | 4000 | 3810/1530 | 38W/15W | 101/102 | 100° |
| 1993800 Ennio S120/4000/38W/25W/80/A100/EM3H | 1201 x 57 x 81 ± 1mm | 4000 | 3810/2680 | 38W/25W | 101/108 | 100° |
| 1993801 Ennio S120/4000/38W/32W/80/A100/EM3H | 1201 x 57 x 81 ± 1mm | 4000 | 3810/3190 | 38W/32W | 101/100 | 100° |
| 1993802 Ennio S120/4000/38W/38W/80/A100/EM3H | 1201 x 57 x 81 ± 1mm | 4000 | 3810/3810 | 38W/38W | 101/101 | 100° |
| 1993803 Ennio S120/4000/50W/15W/80/A100/EM3H | 1201 x 57 x 81 ± 1mm | 4000 | 4620/1530 | 50W/15W | 93/102 | 100° |
| 1993804 Ennio S120/4000/50W/25W/80/A100/EM3H | 1201 x 57 x 81 ± 1mm | 4000 | 4620/2680 | 50W/25W | 93/108 | 100° |
| 1993805 Ennio S120/4000/50W/32W/80/A100/EM3H | 1201 x 57 x 81 ± 1mm | 4000 | 4620/3190 | 50W/32W | 93/100 | 100° |
| 1993806 Ennio S120/4000/50W/38W/80/A100/EM3H | 1201 x 57 x 81 ± 1mm | 4000 | 4620/3810 | 50W/38W | 93/101 | 100° |
| 1993807 Ennio S120/4000/50W/50W/80/A100/EM3H | 1201 x 57 x 81 ± 1mm | 4000 | 4620/4620 | 50W/50W | 93/93 | 100° |
| 1993808 Ennio S120/5000/32W/15W/80/A100/EM3H | 1201 x 57 x 81 ± 1mm | 5000 | 3190/1530 | 32W/15W | 100/102 | 100° |
| 1993809 Ennio S120/5000/32W/25W/80/A100/EM3H | 1201 x 57 x 81 ± 1mm | 5000 | 3190/2680 | 32W/25W | 100/108 | 100° |
| 1993810 Ennio S120/5000/32W/32W/80/A100/EM3H | 1201 x 57 x 81 ± 1mm | 5000 | 3190/3190 | 32W/32W | 100/100 | 100° |
| 1993811 Ennio S120/5000/38W/15W/80/A100/EM3H | 1201 x 57 x 81 ± 1mm | 5000 | 3810/1530 | 38W/15W | 101/102 | 100° |
| 1993812 Ennio S120/5000/38W/25W/80/A100/EM3H | 1201 x 57 x 81 ± 1mm | 5000 | 3810/2680 | 38W/25W | 101/108 | 100° |
| 1993813 Ennio S120/5000/38W/32W/80/A100/EM3H | 1201 x 57 x 81 ± 1mm | 5000 | 3810/3190 | 38W/32W | 101/100 | 100° |
| 1993814 Ennio S120/5000/38W/38W/80/A100/EM3H | 1201 x 57 x 81 ± 1mm | 5000 | 3810/3810 | 38W/38W | 101/101 | 100° |
| 1993815 Ennio S120/5000/50W/15W/80/A100/EM3H | 1201 x 57 x 81 ± 1mm | 5000 | 4620/1530 | 50W/15W | 93/102 | 100° |
| 1993816 Ennio S120/5000/50W/25W/80/A100/EM3H | 1201 x 57 x 81 ± 1mm | 5000 | 4620/2680 | 50W/25W | 93/108 | 100° |
| 1993817 Ennio S120/5000/50W/32W/80/A100/EM3H | 1201 x 57 x 81 ± 1mm | 5000 | 4620/3190 | 50W/32W | 93/100 | 100° |
| 1993818 Ennio S120/5000/50W/38W/80/A100/EM3H | 1201 x 57 x 81 ± 1mm | 5000 | 4620/3810 | 50W/38W | 93/101 | 100° |
| 1993819 Ennio S120/5000/50W/50W/80/A100/EM3H | 1201 x 57 x 81 ± 1mm | 5000 | 4620/4620 | 50W/50W | 93/93 | 100° |
| 1993820 Ennio S120/6500/32W/15W/80/A100/EM3H | 1201 x 57 x 81 ± 1mm | 6500 | 3190/1530 | 32W/15W | 100/102 | 100° |
| 1993821 Ennio S120/6500/32W/25W/80/A100/EM3H | 1201 x 57 x 81 ± 1mm | 6500 | 3190/2680 | 32W/25W | 100/108 | 100° |
| 1993822 Ennio S120/6500/32W/32W/80/A100/EM3H | 1201 x 57 x 81 ± 1mm | 6500 | 3190/3190 | 32W/32W | 100/100 | 100° |
| 1993823 Ennio S120/6500/38W/15W/80/A100/EM3H | 1201 x 57 x 81 ± 1mm | 6500 | 3810/1530 | 38W/15W | 101/102 | 100° |
| 1993824 Ennio S120/6500/38W/25W/80/A100/EM3H | 1201 x 57 x 81 ± 1mm | 6500 | 3810/2680 | 38W/25W | 101/108 | 100° |
| 1993825 Ennio S120/6500/38W/32W/80/A100/EM3H | 1201 x 57 x 81 ± 1mm | 6500 | 3810/3190 | 38W/32W | 101/100 | 100° |
| 1993826 Ennio S120/6500/38W/38W/80/A100/EM3H | 1201 x 57 x 81 ± 1mm | 6500 | 3810/3810 | 38W/38W | 101/101 | 100° |
| 1993827 Ennio S120/6500/50W/15W/80/A100/EM3H | 1201 x 57 x 81 ± 1mm | 6500 | 4620/1530 | 50W/15W | 93/102 | 100° |
| 1993828 Ennio S120/6500/50W/25W/80/A100/EM3H | 1201 x 57 x 81 ± 1mm | 6500 | 4620/2680 | 50W/25W | 93/108 | 100° |
| 1993829 Ennio S120/6500/50W/32W/80/A100/EM3H | 1201 x 57 x 81 ± 1mm | 6500 | 4620/3190 | 50W/32W | 93/100 | 100° |
| 1993830 Ennio S120/6500/50W/38W/80/A100/EM3H | 1201 x 57 x 81 ± 1mm | 6500 | 4620/3810 | 50W/38W | 93/101 | 100° |
| 1993831 Ennio S120/6500/50W/50W/80/A100/EM3H | 1201 x 57 x 81 ± 1mm | 6500 | 4620/4620 | 50W/50W | 93/93 | 100° |

SKU SPECIFICATIONS

| Product Code | Dimensions (mm) | CCT (K) | Lumens (lm) (UP/DOWN) | Power (W) (UP/DOWN) | Eff. (lm/watt) (UP/DOWN) | Lens Angle (°) (UP/DOWN) |
|--|----------------------|---------|-----------------------|---------------------|--------------------------|--------------------------|
| CRI 80 | | | | | | |
| 1993832 Ennio S150/3000/37W/23W/80/A100/EM3H | 1482 x 57 x 81 ± 1mm | 3000 | 3810/2450 | 37W/23W | 103/107 | 100° |
| 1993833 Ennio S150/3000/37W/33W/80/A100/EM3H | 1482 x 57 x 81 ± 1mm | 3000 | 3810/3555 | 37W/33W | 103/108 | 100° |
| 1993834 Ennio S150/3000/37W/37W/80/A100/EM3H | 1482 x 57 x 81 ± 1mm | 3000 | 3810/3810 | 37W/37W | 103/103 | 100° |
| 1993835 Ennio S150/3000/50W/23W/80/A100/EM3H | 1482 x 57 x 81 ± 1mm | 3000 | 5000/2450 | 50W/23W | 100/107 | 100° |
| 1993836 Ennio S150/3000/50W/33W/80/A100/EM3H | 1482 x 57 x 81 ± 1mm | 3000 | 5000/3555 | 50W/33W | 100/108 | 100° |
| 1993837 Ennio S150/3000/50W/37W/80/A100/EM3H | 1482 x 57 x 81 ± 1mm | 3000 | 5000/3810 | 50W/37W | 100/103 | 100° |
| 1993838 Ennio S150/3000/50W/50W/80/A100/EM3H | 1482 x 57 x 81 ± 1mm | 3000 | 5000/5000 | 50W/50W | 100/100 | 100° |
| 1993839 Ennio S150/3000/60W/23W/80/A100/EM3H | 1482 x 57 x 81 ± 1mm | 3000 | 5750/2450 | 60W/23W | 96/107 | 100° |
| 1993840 Ennio S150/3000/60W/33W/80/A100/EM3H | 1482 x 57 x 81 ± 1mm | 3000 | 5750/3555 | 60W/33W | 96/108 | 100° |
| 1993841 Ennio S150/3000/60W/37W/80/A100/EM3H | 1482 x 57 x 81 ± 1mm | 3000 | 5750/3810 | 60W/37W | 96/103 | 100° |
| 1993842 Ennio S150/3000/60W/50W/80/A100/EM3H | 1482 x 57 x 81 ± 1mm | 3000 | 5750/5000 | 60W/50W | 96/100 | 100° |
| 1993843 Ennio S150/3000/60W/60W/80/A100/EM3H | 1482 x 57 x 81 ± 1mm | 3000 | 5750/5750 | 60W/60W | 96/96 | 100° |
| 1993844 Ennio S150/4000/37W/23W/80/A100/EM3H | 1482 x 57 x 81 ± 1mm | 4000 | 3810/2450 | 37W/23W | 103/107 | 100° |
| 1993845 Ennio S150/4000/37W/33W/80/A100/EM3H | 1482 x 57 x 81 ± 1mm | 4000 | 3810/3555 | 37W/33W | 103/108 | 100° |
| 1993846 Ennio S150/4000/37W/37W/80/A100/EM3H | 1482 x 57 x 81 ± 1mm | 4000 | 3810/3810 | 37W/37W | 103/103 | 100° |
| 1993847 Ennio S150/4000/50W/23W/80/A100/EM3H | 1482 x 57 x 81 ± 1mm | 4000 | 5000/2450 | 50W/23W | 100/107 | 100° |
| 1993848 Ennio S150/4000/50W/33W/80/A100/EM3H | 1482 x 57 x 81 ± 1mm | 4000 | 5000/3555 | 50W/33W | 100/108 | 100° |
| 1993849 Ennio S150/4000/50W/37W/80/A100/EM3H | 1482 x 57 x 81 ± 1mm | 4000 | 5000/3810 | 50W/37W | 100/103 | 100° |
| 1993850 Ennio S150/4000/50W/50W/80/A100/EM3H | 1482 x 57 x 81 ± 1mm | 4000 | 5000/5000 | 50W/50W | 100/100 | 100° |
| 1993851 Ennio S150/4000/60W/23W/80/A100/EM3H | 1482 x 57 x 81 ± 1mm | 4000 | 5750/2450 | 60W/23W | 96/107 | 100° |
| 1993852 Ennio S150/4000/60W/33W/80/A100/EM3H | 1482 x 57 x 81 ± 1mm | 4000 | 5750/3555 | 60W/33W | 96/108 | 100° |
| 1993853 Ennio S150/4000/60W/37W/80/A100/EM3H | 1482 x 57 x 81 ± 1mm | 4000 | 5750/3810 | 60W/37W | 96/103 | 100° |
| 1993854 Ennio S150/4000/60W/50W/80/A100/EM3H | 1482 x 57 x 81 ± 1mm | 4000 | 5750/5000 | 60W/50W | 96/100 | 100° |
| 1993855 Ennio S150/4000/60W/60W/80/A100/EM3H | 1482 x 57 x 81 ± 1mm | 4000 | 5750/5750 | 60W/60W | 96/96 | 100° |
| 1993856 Ennio S150/5000/37W/23W/80/A100/EM3H | 1482 x 57 x 81 ± 1mm | 5000 | 3810/2450 | 37W/23W | 103/107 | 100° |
| 1993857 Ennio S150/5000/37W/33W/80/A100/EM3H | 1482 x 57 x 81 ± 1mm | 5000 | 3810/3555 | 37W/33W | 103/108 | 100° |
| 1993858 Ennio S150/5000/37W/37W/80/A100/EM3H | 1482 x 57 x 81 ± 1mm | 5000 | 3810/3810 | 37W/37W | 103/103 | 100° |
| 1993859 Ennio S150/5000/50W/23W/80/A100/EM3H | 1482 x 57 x 81 ± 1mm | 5000 | 5000/2450 | 50W/23W | 100/107 | 100° |
| 1993860 Ennio S150/5000/50W/33W/80/A100/EM3H | 1482 x 57 x 81 ± 1mm | 5000 | 5000/3555 | 50W/33W | 100/108 | 100° |
| 1993861 Ennio S150/5000/50W/37W/80/A100/EM3H | 1482 x 57 x 81 ± 1mm | 5000 | 5000/3810 | 50W/37W | 100/103 | 100° |
| 1993862 Ennio S150/5000/50W/50W/80/A100/EM3H | 1482 x 57 x 81 ± 1mm | 5000 | 5000/5000 | 50W/50W | 100/100 | 100° |
| 1993863 Ennio S150/5000/60W/23W/80/A100/EM3H | 1482 x 57 x 81 ± 1mm | 5000 | 5750/2450 | 60W/23W | 96/107 | 100° |
| 1993864 Ennio S150/5000/60W/33W/80/A100/EM3H | 1482 x 57 x 81 ± 1mm | 5000 | 5750/3555 | 60W/33W | 96/108 | 100° |
| 1993865 Ennio S150/5000/60W/37W/80/A100/EM3H | 1482 x 57 x 81 ± 1mm | 5000 | 5750/3810 | 60W/37W | 96/103 | 100° |
| 1993866 Ennio S150/5000/60W/50W/80/A100/EM3H | 1482 x 57 x 81 ± 1mm | 5000 | 5750/5000 | 60W/50W | 96/100 | 100° |
| 1993867 Ennio S150/5000/60W/60W/80/A100/EM3H | 1482 x 57 x 81 ± 1mm | 5000 | 5750/5750 | 60W/60W | 96/96 | 100° |
| 1993868 Ennio S150/6500/37W/23W/80/A100/EM3H | 1482 x 57 x 81 ± 1mm | 6500 | 3810/2450 | 37W/23W | 103/107 | 100° |
| 1993869 Ennio S150/6500/37W/33W/80/A100/EM3H | 1482 x 57 x 81 ± 1mm | 6500 | 3810/3555 | 37W/33W | 103/108 | 100° |
| 1993870 Ennio S150/6500/37W/37W/80/A100/EM3H | 1482 x 57 x 81 ± 1mm | 6500 | 3810/3810 | 37W/37W | 103/103 | 100° |
| 1993871 Ennio S150/6500/50W/23W/80/A100/EM3H | 1482 x 57 x 81 ± 1mm | 6500 | 5000/2450 | 50W/23W | 100/107 | 100° |
| 1993872 Ennio S150/6500/50W/33W/80/A100/EM3H | 1482 x 57 x 81 ± 1mm | 6500 | 5000/3555 | 50W/33W | 100/108 | 100° |
| 1993873 Ennio S150/6500/50W/37W/80/A100/EM3H | 1482 x 57 x 81 ± 1mm | 6500 | 5000/3810 | 50W/37W | 100/103 | 100° |
| 1993874 Ennio S150/6500/50W/50W/80/A100/EM3H | 1482 x 57 x 81 ± 1mm | 6500 | 5000/5000 | 50W/50W | 100/100 | 100° |
| 1993875 Ennio S150/6500/60W/23W/80/A100/EM3H | 1482 x 57 x 81 ± 1mm | 6500 | 5750/2450 | 60W/23W | 96/107 | 100° |
| 1993876 Ennio S150/6500/60W/33W/80/A100/EM3H | 1482 x 57 x 81 ± 1mm | 6500 | 5750/3555 | 60W/33W | 96/108 | 100° |
| 1993877 Ennio S150/6500/60W/37W/80/A100/EM3H | 1482 x 57 x 81 ± 1mm | 6500 | 5750/3810 | 60W/37W | 96/103 | 100° |
| 1993878 Ennio S150/6500/60W/50W/80/A100/EM3H | 1482 x 57 x 81 ± 1mm | 6500 | 5750/5000 | 60W/50W | 96/100 | 100° |
| 1993879 Ennio S150/6500/60W/60W/80/A100/EM3H | 1482 x 57 x 81 ± 1mm | 6500 | 5750/5750 | 60W/60W | 96/96 | 100° |

SKU SPECIFICATIONS

| Product Code | Dimensions (mm) | CCT (K) | Lumens (lm) (UP/DOWN) | Power (W) (UP/DOWN) | Eff. (lm/watt) (UP/DOWN) | Lens Angle (°) (UP/DOWN) |
|--|----------------------|---------|-----------------------|---------------------|--------------------------|--------------------------|
| CRI 80 | | | | | | |
| 1993880 Ennio S240/3000/64W/30W/80/A100/EM3H | 2323 x 57 x 81 ± 1mm | 3000 | 6380/3060 | 64W/30W | 100/102 | 100° |
| 1993881 Ennio S240/3000/64W/50W/80/A100/EM3H | 2323 x 57 x 81 ± 1mm | 3000 | 6380/5360 | 64W/50W | 100/108 | 100° |
| 1993882 Ennio S240/3000/64W/64W/80/A100/EM3H | 2323 x 57 x 81 ± 1mm | 3000 | 6380/6380 | 64W/64W | 100/100 | 100° |
| 1993883 Ennio S240/3000/76W/30W/80/A100/EM3H | 2323 x 57 x 81 ± 1mm | 3000 | 7620/3060 | 76W/30W | 101/102 | 100° |
| 1993884 Ennio S240/3000/76W/50W/80/A100/EM3H | 2323 x 57 x 81 ± 1mm | 3000 | 7620/5360 | 76W/50W | 101/108 | 100° |
| 1993885 Ennio S240/3000/76W/64W/80/A100/EM3H | 2323 x 57 x 81 ± 1mm | 3000 | 7620/6380 | 76W/64W | 101/100 | 100° |
| 1993886 Ennio S240/3000/76W/76W/80/A100/EM3H | 2323 x 57 x 81 ± 1mm | 3000 | 7620/7620 | 76W/76W | 101/101 | 100° |
| 1993887 Ennio S240/3000/100W/30W/80/A100/EM3H | 2323 x 57 x 81 ± 1mm | 3000 | 9240/3060 | 100W/30W | 93/102 | 100° |
| 1993888 Ennio S240/3000/100W/50W/80/A100/EM3H | 2323 x 57 x 81 ± 1mm | 3000 | 9240/5360 | 100W/50W | 93/108 | 100° |
| 1993889 Ennio S240/3000/100W/64W/80/A100/EM3H | 2323 x 57 x 81 ± 1mm | 3000 | 9240/6380 | 100W/64W | 93/100 | 100° |
| 1993890 Ennio S240/3000/100W/76W/80/A100/EM3H | 2323 x 57 x 81 ± 1mm | 3000 | 9240/7620 | 100W/76W | 93/101 | 100° |
| 1993891 Ennio S240/3000/100W/100W/80/A100/EM3H | 2323 x 57 x 81 ± 1mm | 3000 | 9240/9240 | 100W/100W | 93/93 | 100° |
| 1993892 Ennio S240/4000/64W/30W/80/A100/EM3H | 2323 x 57 x 81 ± 1mm | 4000 | 6380/3060 | 64W/30W | 100/102 | 100° |
| 1993893 Ennio S240/4000/64W/50W/80/A100/EM3H | 2323 x 57 x 81 ± 1mm | 4000 | 6380/5360 | 64W/50W | 100/108 | 100° |
| 1993894 Ennio S240/4000/64W/64W/80/A100/EM3H | 2323 x 57 x 81 ± 1mm | 4000 | 6380/6380 | 64W/64W | 100/100 | 100° |
| 1993895 Ennio S240/4000/76W/30W/80/A100/EM3H | 2323 x 57 x 81 ± 1mm | 4000 | 7620/3060 | 76W/30W | 101/102 | 100° |
| 1993896 Ennio S240/4000/76W/50W/80/A100/EM3H | 2323 x 57 x 81 ± 1mm | 4000 | 7620/5360 | 76W/50W | 101/108 | 100° |
| 1993897 Ennio S240/4000/76W/64W/80/A100/EM3H | 2323 x 57 x 81 ± 1mm | 4000 | 7620/6380 | 76W/64W | 101/100 | 100° |
| 1993898 Ennio S240/4000/76W/76W/80/A100/EM3H | 2323 x 57 x 81 ± 1mm | 4000 | 7620/7620 | 76W/76W | 101/101 | 100° |
| 1993899 Ennio S240/4000/100W/30W/80/A100/EM3H | 2323 x 57 x 81 ± 1mm | 4000 | 9240/3060 | 100W/30W | 93/102 | 100° |
| 1993900 Ennio S240/4000/100W/50W/80/A100/EM3H | 2323 x 57 x 81 ± 1mm | 4000 | 9240/5360 | 100W/50W | 93/108 | 100° |
| 1993901 Ennio S240/4000/100W/64W/80/A100/EM3H | 2323 x 57 x 81 ± 1mm | 4000 | 9240/6380 | 100W/64W | 93/100 | 100° |
| 1993902 Ennio S240/4000/100W/76W/80/A100/EM3H | 2323 x 57 x 81 ± 1mm | 4000 | 9240/7620 | 100W/76W | 93/101 | 100° |
| 1993903 Ennio S240/4000/100W/100W/80/A100/EM3H | 2323 x 57 x 81 ± 1mm | 4000 | 9240/9240 | 100W/100W | 93/93 | 100° |
| 1993904 Ennio S240/5000/64W/30W/80/A100/EM3H | 2323 x 57 x 81 ± 1mm | 5000 | 6380/3060 | 64W/30W | 100/102 | 100° |
| 1993905 Ennio S240/5000/64W/50W/80/A100/EM3H | 2323 x 57 x 81 ± 1mm | 5000 | 6380/5360 | 64W/50W | 100/108 | 100° |
| 1993906 Ennio S240/5000/64W/64W/80/A100/EM3H | 2323 x 57 x 81 ± 1mm | 5000 | 6380/6380 | 64W/64W | 100/100 | 100° |
| 1993907 Ennio S240/5000/76W/30W/80/A100/EM3H | 2323 x 57 x 81 ± 1mm | 5000 | 7620/3060 | 76W/30W | 101/102 | 100° |
| 1993908 Ennio S240/5000/76W/50W/80/A100/EM3H | 2323 x 57 x 81 ± 1mm | 5000 | 7620/5360 | 76W/50W | 101/108 | 100° |
| 1993909 Ennio S240/5000/76W/64W/80/A100/EM3H | 2323 x 57 x 81 ± 1mm | 5000 | 7620/6380 | 76W/64W | 101/100 | 100° |
| 1993910 Ennio S240/5000/76W/76W/80/A100/EM3H | 2323 x 57 x 81 ± 1mm | 5000 | 7620/7620 | 76W/76W | 101/101 | 100° |
| 1993911 Ennio S240/5000/100W/30W/80/A100/EM3H | 2323 x 57 x 81 ± 1mm | 5000 | 9240/3060 | 100W/30W | 93/102 | 100° |
| 1993912 Ennio S240/5000/100W/50W/80/A100/EM3H | 2323 x 57 x 81 ± 1mm | 5000 | 9240/5360 | 100W/50W | 93/108 | 100° |
| 1993913 Ennio S240/5000/100W/64W/80/A100/EM3H | 2323 x 57 x 81 ± 1mm | 5000 | 9240/6380 | 100W/64W | 93/100 | 100° |
| 1993914 Ennio S240/5000/100W/76W/80/A100/EM3H | 2323 x 57 x 81 ± 1mm | 5000 | 9240/7620 | 100W/76W | 93/101 | 100° |
| 1993915 Ennio S240/5000/100W/100W/80/A100/EM3H | 2323 x 57 x 81 ± 1mm | 5000 | 9240/9240 | 100W/100W | 93/93 | 100° |
| 1993916 Ennio S240/6500/64W/30W/80/A100/EM3H | 2323 x 57 x 81 ± 1mm | 6500 | 6380/3060 | 64W/30W | 100/102 | 100° |
| 1993917 Ennio S240/6500/64W/50W/80/A100/EM3H | 2323 x 57 x 81 ± 1mm | 6500 | 6380/5360 | 64W/50W | 100/108 | 100° |
| 1993918 Ennio S240/6500/64W/64W/80/A100/EM3H | 2323 x 57 x 81 ± 1mm | 6500 | 6380/6380 | 64W/64W | 100/100 | 100° |
| 1993919 Ennio S240/6500/76W/30W/80/A100/EM3H | 2323 x 57 x 81 ± 1mm | 6500 | 7620/3060 | 76W/30W | 101/102 | 100° |
| 1993920 Ennio S240/6500/76W/50W/80/A100/EM3H | 2323 x 57 x 81 ± 1mm | 6500 | 7620/5360 | 76W/50W | 101/108 | 100° |
| 1993921 Ennio S240/6500/76W/64W/80/A100/EM3H | 2323 x 57 x 81 ± 1mm | 6500 | 7620/6380 | 76W/64W | 101/100 | 100° |
| 1993922 Ennio S240/6500/76W/76W/80/A100/EM3H | 2323 x 57 x 81 ± 1mm | 6500 | 7620/7620 | 76W/76W | 101/101 | 100° |
| 1993923 Ennio S240/6500/100W/30W/80/A100/EM3H | 2323 x 57 x 81 ± 1mm | 6500 | 9240/3060 | 100W/30W | 93/102 | 100° |
| 1993924 Ennio S240/6500/100W/50W/80/A100/EM3H | 2323 x 57 x 81 ± 1mm | 6500 | 9240/5360 | 100W/50W | 93/108 | 100° |
| 1993925 Ennio S240/6500/100W/64W/80/A100/EM3H | 2323 x 57 x 81 ± 1mm | 6500 | 9240/6380 | 100W/64W | 93/100 | 100° |
| 1993926 Ennio S240/6500/100W/76W/80/A100/EM3H | 2323 x 57 x 81 ± 1mm | 6500 | 9240/7620 | 100W/76W | 93/101 | 100° |
| 1993927 Ennio S240/6500/100W/100W/80/A100/EM3H | 2323 x 57 x 81 ± 1mm | 6500 | 9240/9240 | 100W/100W | 93/93 | 100° |

SKU SPECIFICATIONS

| Product Code | Dimensions (mm) | CCT (K) | Lumens (lm) (UP/DOWN) | Power (W) (UP/DOWN) | Eff. (lm/watt) (UP/DOWN) | Lens Angle (°) (UP/DOWN) |
|--|----------------------|---------|--------------------------|------------------------|-----------------------------|-----------------------------|
| CRI 80 | | | | | | |
| 1993928 Ennio S300/3000/74W/46W/80/A100/EM3H | 2885 x 57 x 81 ± 1mm | 3000 | 7620/4900 | 74W/46W | 103/107 | 100° |
| 1993929 Ennio S300/3000/74W/66W/80/A100/EM3H | 2885 x 57 x 81 ± 1mm | 3000 | 7620/7110 | 74W/66W | 103/108 | 100° |
| 1993930 Ennio S300/3000/74W/74W/80/A100/EM3H | 2885 x 57 x 81 ± 1mm | 3000 | 7620/7620 | 74W/74W | 103/103 | 100° |
| 1993931 Ennio S300/3000/100W/46W/80/A100/EM3H | 2885 x 57 x 81 ± 1mm | 3000 | 10000/4900 | 100W/46W | 100/107 | 100° |
| 1993932 Ennio S300/3000/100W/66W/80/A100/EM3H | 2885 x 57 x 81 ± 1mm | 3000 | 10000/7110 | 100W/66W | 100/108 | 100° |
| 1993933 Ennio S300/3000/100W/74W/80/A100/EM3H | 2885 x 57 x 81 ± 1mm | 3000 | 10000/7620 | 100W/74W | 100/103 | 100° |
| 1993934 Ennio S300/3000/100W/100W/80/A100/EM3H | 2885 x 57 x 81 ± 1mm | 3000 | 10000/10000 | 100W/100W | 100/100 | 100° |
| 1993935 Ennio S300/3000/120W/46W/80/A100/EM3H | 2885 x 57 x 81 ± 1mm | 3000 | 11500/4900 | 120W/46W | 96/107 | 100° |
| 1993936 Ennio S300/3000/120W/66W/80/A100/EM3H | 2885 x 57 x 81 ± 1mm | 3000 | 11500/7110 | 120W/66W | 96/108 | 100° |
| 1993937 Ennio S300/3000/120W/74W/80/A100/EM3H | 2885 x 57 x 81 ± 1mm | 3000 | 11500/7620 | 120W/74W | 96/103 | 100° |
| 1993938 Ennio S300/3000/120W/100W/80/A100/EM3H | 2885 x 57 x 81 ± 1mm | 3000 | 11500/10000 | 120W/100W | 96/100 | 100° |
| 1993939 Ennio S300/3000/120W/120W/80/A100/EM3H | 2885 x 57 x 81 ± 1mm | 3000 | 11500/11500 | 120W/120W | 96/96 | 100° |
| 1993940 Ennio S300/4000/74W/46W/80/A100/EM3H | 2885 x 57 x 81 ± 1mm | 4000 | 7620/4900 | 74W/46W | 103/107 | 100° |
| 1993941 Ennio S300/4000/74W/66W/80/A100/EM3H | 2885 x 57 x 81 ± 1mm | 4000 | 7620/7110 | 74W/66W | 103/108 | 100° |
| 1993942 Ennio S300/4000/74W/74W/80/A100/EM3H | 2885 x 57 x 81 ± 1mm | 4000 | 7620/7620 | 74W/74W | 103/103 | 100° |
| 1993943 Ennio S300/4000/100W/46W/80/A100/EM3H | 2885 x 57 x 81 ± 1mm | 4000 | 10000/4900 | 100W/46W | 100/107 | 100° |
| 1993944 Ennio S300/4000/100W/66W/80/A100/EM3H | 2885 x 57 x 81 ± 1mm | 4000 | 10000/7110 | 100W/66W | 100/108 | 100° |
| 1993945 Ennio S300/4000/100W/74W/80/A100/EM3H | 2885 x 57 x 81 ± 1mm | 4000 | 10000/7620 | 100W/74W | 100/103 | 100° |
| 1993946 Ennio S300/4000/100W/100W/80/A100/EM3H | 2885 x 57 x 81 ± 1mm | 4000 | 10000/10000 | 100W/100W | 100/100 | 100° |
| 1993947 Ennio S300/4000/120W/46W/80/A100/EM3H | 2885 x 57 x 81 ± 1mm | 4000 | 11500/4900 | 120W/46W | 96/107 | 100° |
| 1993948 Ennio S300/4000/120W/66W/80/A100/EM3H | 2885 x 57 x 81 ± 1mm | 4000 | 11500/7110 | 120W/66W | 96/108 | 100° |
| 1993949 Ennio S300/4000/120W/74W/80/A100/EM3H | 2885 x 57 x 81 ± 1mm | 4000 | 11500/7620 | 120W/74W | 96/103 | 100° |
| 1993950 Ennio S300/4000/120W/100W/80/A100/EM3H | 2885 x 57 x 81 ± 1mm | 4000 | 11500/10000 | 120W/100W | 96/100 | 100° |
| 1993951 Ennio S300/4000/120W/120W/80/A100/EM3H | 2885 x 57 x 81 ± 1mm | 4000 | 11500/11500 | 120W/120W | 96/96 | 100° |
| 1993952 Ennio S300/5000/74W/46W/80/A100/EM3H | 2885 x 57 x 81 ± 1mm | 5000 | 7620/4900 | 74W/46W | 103/107 | 100° |
| 1993953 Ennio S300/5000/74W/66W/80/A100/EM3H | 2885 x 57 x 81 ± 1mm | 5000 | 7620/7110 | 74W/66W | 103/108 | 100° |
| 1993954 Ennio S300/5000/74W/74W/80/A100/EM3H | 2885 x 57 x 81 ± 1mm | 5000 | 7620/7620 | 74W/74W | 103/103 | 100° |
| 1993955 Ennio S300/5000/100W/46W/80/A100/EM3H | 2885 x 57 x 81 ± 1mm | 5000 | 10000/4900 | 100W/46W | 100/107 | 100° |
| 1993956 Ennio S300/5000/100W/66W/80/A100/EM3H | 2885 x 57 x 81 ± 1mm | 5000 | 10000/7110 | 100W/66W | 100/108 | 100° |
| 1993957 Ennio S300/5000/100W/74W/80/A100/EM3H | 2885 x 57 x 81 ± 1mm | 5000 | 10000/7620 | 100W/74W | 100/103 | 100° |
| 1993958 Ennio S300/5000/100W/100W/80/A100/EM3H | 2885 x 57 x 81 ± 1mm | 5000 | 10000/10000 | 100W/100W | 100/100 | 100° |
| 1993959 Ennio S300/5000/120W/46W/80/A100/EM3H | 2885 x 57 x 81 ± 1mm | 5000 | 11500/4900 | 120W/46W | 96/107 | 100° |
| 1993960 Ennio S300/5000/120W/66W/80/A100/EM3H | 2885 x 57 x 81 ± 1mm | 5000 | 11500/7110 | 120W/66W | 96/108 | 100° |
| 1993961 Ennio S300/5000/120W/74W/80/A100/EM3H | 2885 x 57 x 81 ± 1mm | 5000 | 11500/7620 | 120W/74W | 96/103 | 100° |
| 1993962 Ennio S300/5000/120W/100W/80/A100/EM3H | 2885 x 57 x 81 ± 1mm | 5000 | 11500/10000 | 120W/100W | 96/100 | 100° |
| 1993963 Ennio S300/5000/120W/120W/80/A100/EM3H | 2885 x 57 x 81 ± 1mm | 5000 | 11500/11500 | 120W/120W | 96/96 | 100° |
| 1993964 Ennio S300/6500/74W/46W/80/A100/EM3H | 2885 x 57 x 81 ± 1mm | 6500 | 7620/4900 | 74W/46W | 103/107 | 100° |
| 1993965 Ennio S300/6500/74W/66W/80/A100/EM3H | 2885 x 57 x 81 ± 1mm | 6500 | 7620/7110 | 74W/66W | 103/108 | 100° |
| 1993966 Ennio S300/6500/74W/74W/80/A100/EM3H | 2885 x 57 x 81 ± 1mm | 6500 | 7620/7620 | 74W/74W | 103/103 | 100° |
| 1993967 Ennio S300/6500/100W/46W/80/A100/EM3H | 2885 x 57 x 81 ± 1mm | 6500 | 10000/4900 | 100W/46W | 100/107 | 100° |
| 1993968 Ennio S300/6500/100W/66W/80/A100/EM3H | 2885 x 57 x 81 ± 1mm | 6500 | 10000/7110 | 100W/66W | 100/108 | 100° |
| 1993969 Ennio S300/6500/100W/74W/80/A100/EM3H | 2885 x 57 x 81 ± 1mm | 6500 | 10000/7620 | 100W/74W | 100/103 | 100° |
| 1993970 Ennio S300/6500/100W/100W/80/A100/EM3H | 2885 x 57 x 81 ± 1mm | 6500 | 10000/10000 | 100W/100W | 100/100 | 100° |
| 1993971 Ennio S300/6500/120W/46W/80/A100/EM3H | 2885 x 57 x 81 ± 1mm | 6500 | 11500/4900 | 120W/46W | 96/107 | 100° |
| 1993972 Ennio S300/6500/120W/66W/80/A100/EM3H | 2885 x 57 x 81 ± 1mm | 6500 | 11500/7110 | 120W/66W | 96/108 | 100° |
| 1993973 Ennio S300/6500/120W/74W/80/A100/EM3H | 2885 x 57 x 81 ± 1mm | 6500 | 11500/7620 | 120W/74W | 96/103 | 100° |
| 1993974 Ennio S300/6500/120W/100W/80/A100/EM3H | 2885 x 57 x 81 ± 1mm | 6500 | 11500/10000 | 120W/100W | 96/100 | 100° |
| 1993975 Ennio S300/6500/120W/120W/80/A100/EM3H | 2885 x 57 x 81 ± 1mm | 6500 | 11500/11500 | 120W/120W | 96/96 | 100° |

PRODUCT CUSTOMIZATION

This product has a great customization capability for combining CRI and CCT.

Below we presented possible CRI / CCT options:

| UP | DOWN |
|------------|-------------|
| 2700 CRI80 | 2400K CRI80 |
| 3000 CRI80 | 2700K CRI80 |
| 4000 CRI80 | 3000K CRI80 |
| 5000 CRI80 | 4000K CRI80 |
| 6500 CRI80 | 2700K CRI90 |
| TW | 2700K CRI90 |
| PI | 3000K CRI90 |
| | 4000K CRI90 |
| | 2700K CRI95 |
| | 3000K CRI95 |
| | 3500K CRI95 |
| | 4000K CRI95 |

For more information please send us a message using the [contact form](#) on our website.
