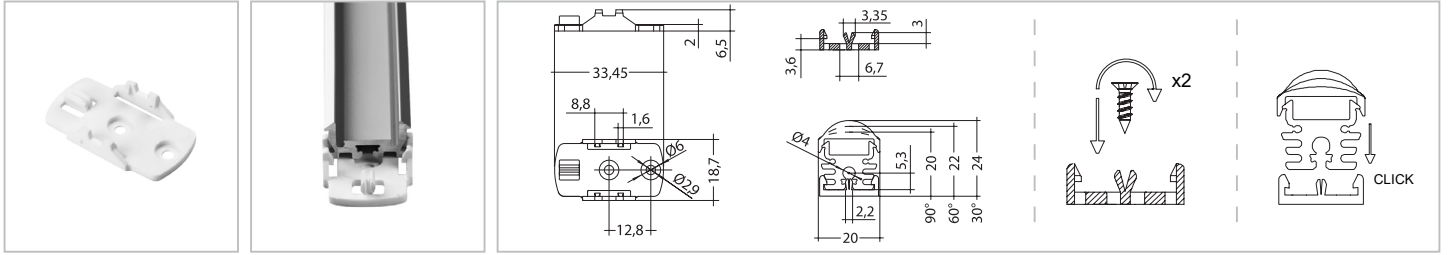


Accessories

MOUNTING FIXING PLATES

88166859 | Plate ECS 0° With Studs

RoHS



Size in mm

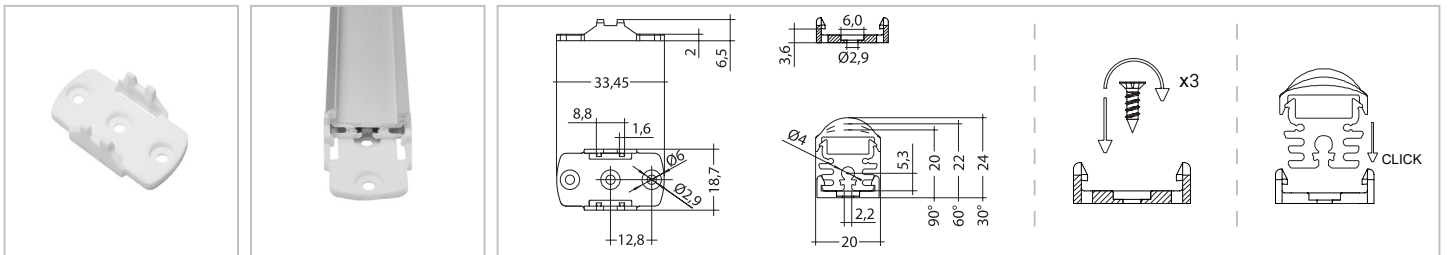
- With studs to prevent sliding in the longitudinal direction
- Material: PBT
- Colour: white

TECHNICAL DATA

Ambient temperature finally installed	-30°C ... +80°C
Ambient temperature during mounting the engine or the profile	+10°C ... +30°C
Dimensions L x W x H	33.45 x 18.7 x 6.5 mm
Weight	0.002 kg

88712147 | Plate ECS 0° Without Studs

RoHS



Size in mm

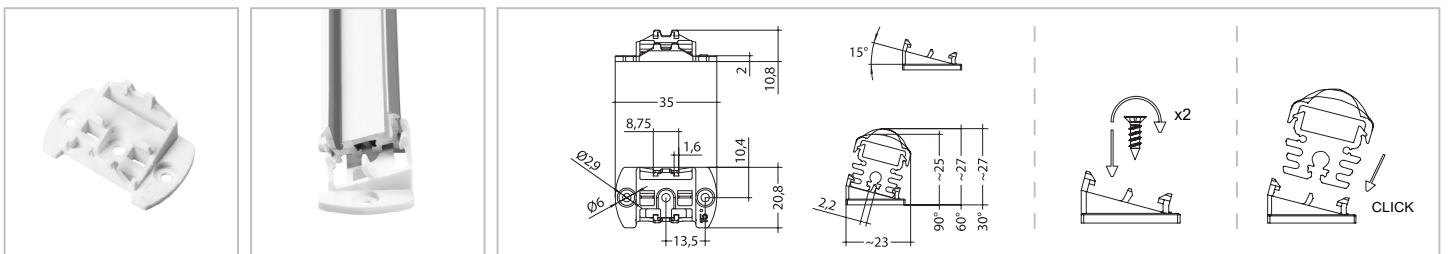
- Material: PBT
- Colour: white

TECHNICAL DATA

Ambient temperature finally installed	-30°C ... +80°C
Ambient temperature during mounting the engine or the profile	+10°C ... +30°C
Dimensions L x W x H	33.45 x 18.7 x 6.5 mm
Weight	0.002 kg

88167372 | Plate ECS 15°

RoHS



Size in mm

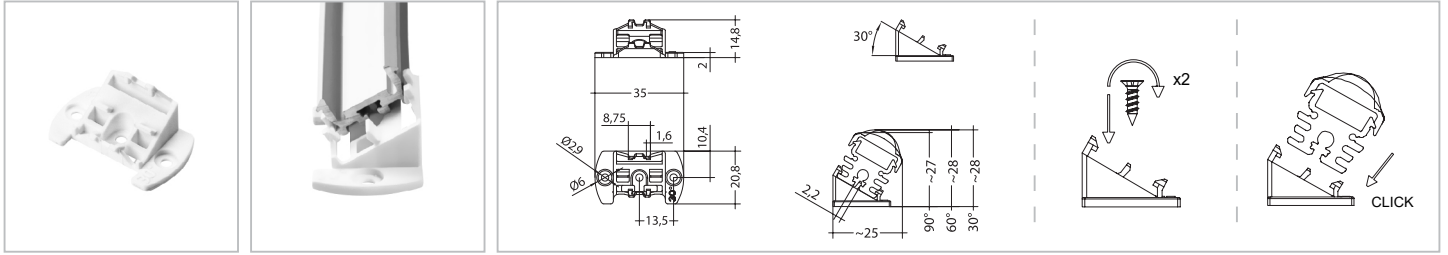
- With studs to prevent sliding in the longitudinal direction
- Material: PBT
- Colour: white

TECHNICAL DATA

Ambient temperature finally installed	-30°C ... +80°C
Ambient temperature during mounting the engine or the profile	+10°C ... +30°C
Dimensions L x W x H	35 x 20.8 x 10.8 mm
Weight	0.002 kg

88167373 | Plate ECS 30°

RoHS



Size in mm

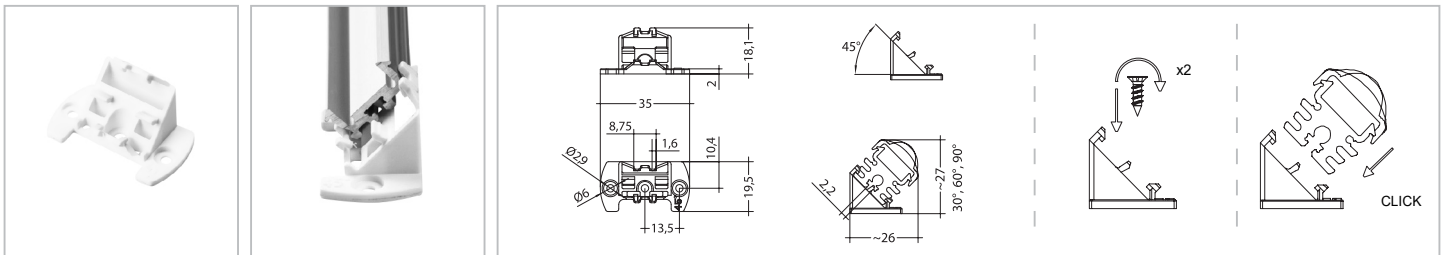
- With studs to prevent sliding in the longitudinal direction
- Material: PBT
- Colour: white

TECHNICAL DATA

Ambient temperature finally installed	-30°C ... +80°C
Ambient temperature during mounting the engine or the profile	+10°C ... +30°C
Dimensions L x W x H	35 x 20.8 x 14.8 mm
Weight	0.002 kg

88167374 | Plate ECS 45°

RoHS



Size in mm

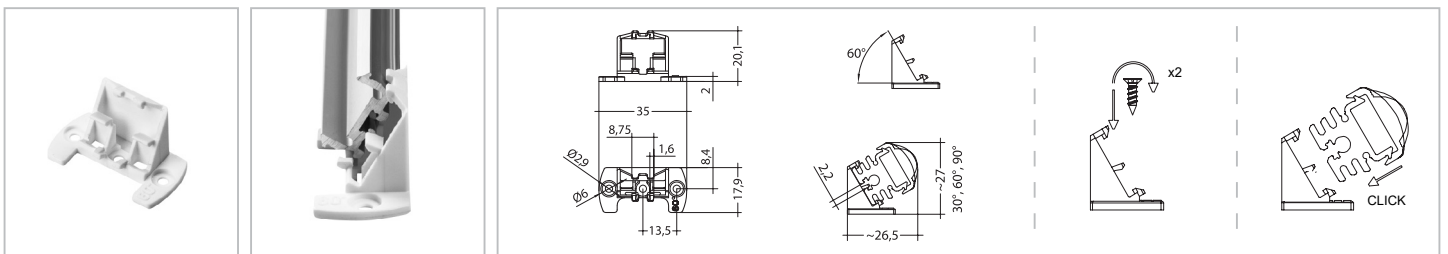
- With studs to prevent sliding in the longitudinal direction
- Material: PBT
- Colour: white

TECHNICAL DATA

Ambient temperature finally installed	-30°C ... +80°C
Ambient temperature during mounting the engine or the profile	+10°C ... +30°C
Dimensions L x W x H	35 x 19.5 x 18.1 mm
Weight	0.002 kg

88167375 | Plate ECS 60°

RoHS



Size in mm

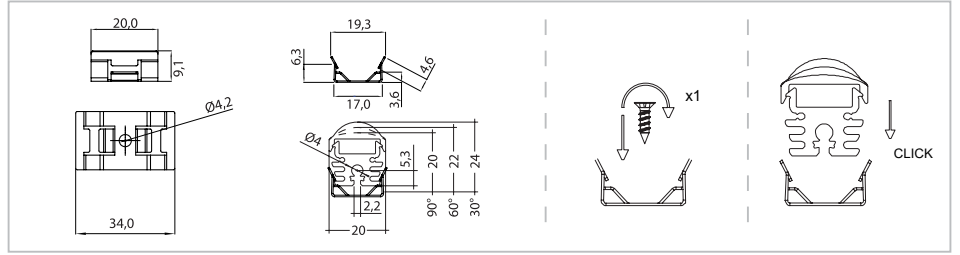
- With studs to prevent sliding in the longitudinal direction
- Material: PBT
- Colour: white

TECHNICAL DATA

Ambient temperature finally installed	-30°C ... +80°C
Ambient temperature during mounting the engine or the profile	+10°C ... +30°C
Dimensions L x W x H	35 x 17.9 x 20.1 mm
Weight	0.002 kg

88167376 | Plate metal 0°

RoHS



Size in mm

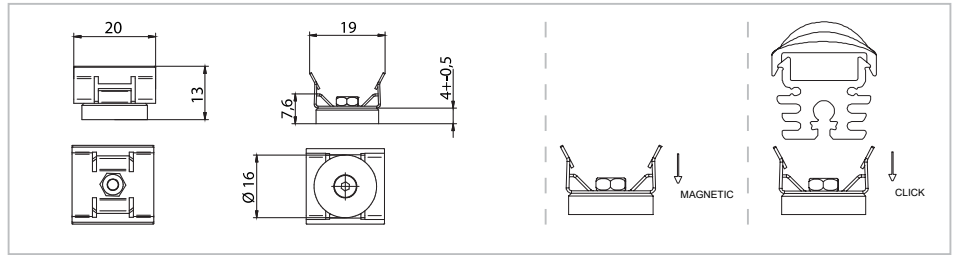
• Material: Metal

TECHNICAL DATA

Ambient temperature finally installed	-30°C ... +80°C
Ambient temperature during mounting the engine or the profile	+10°C ... +30°C
Dimensions L x W x H	34 x 20 x 9.1 mm
Weight	0.002 kg

88167382 | Plate metal 0° Magnetic

RoHS



Size in mm

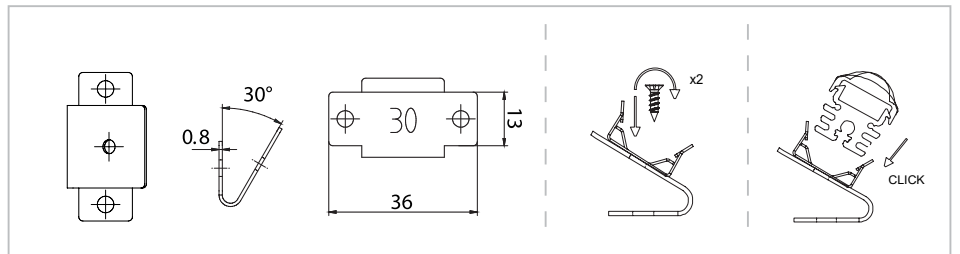
• Material: Metal

TECHNICAL DATA

Ambient temperature finally installed	-30°C ... +80°C
Ambient temperature during mounting the engine or the profile	+10°C ... +30°C
Dimensions L x W x H	20 x 19 x 13 mm
Weight	0.009 kg

88167378 | Plate metal 30°

RoHS



Size in mm

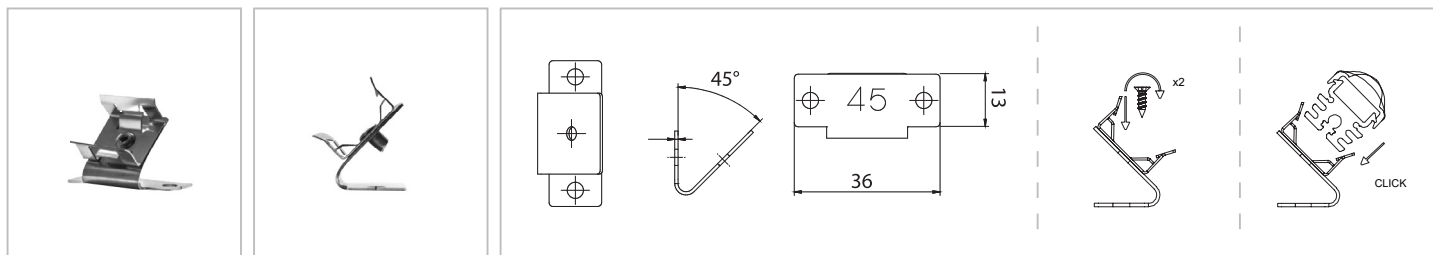
• Material: Metal

TECHNICAL DATA

Ambient temperature finally installed	-30°C ... +80°C
Ambient temperature during mounting the engine or the profile	+10°C ... +30°C
Dimensions L x W x H	36 x 13 x 23 mm
Weight	0.009 kg

88167379 | Plate metal 45°

RoHS



Size in mm

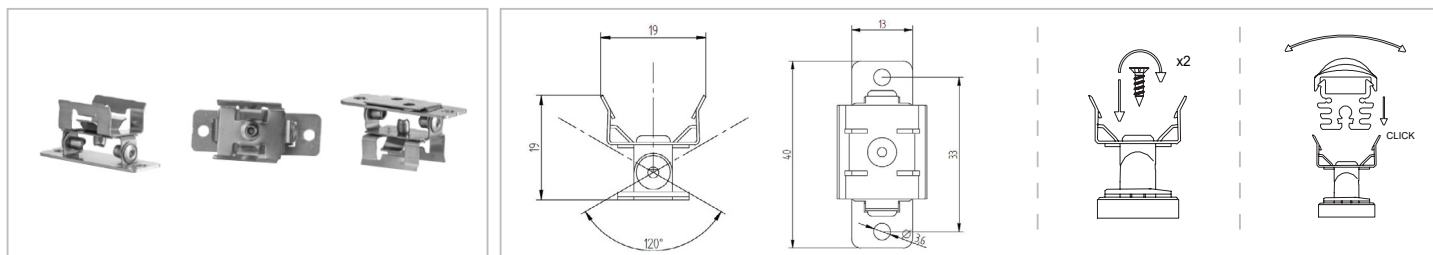
- Material: Metal

TECHNICAL DATA

Ambient temperature finally installed	-30°C ... +80°C
Ambient temperature during mounting the engine or the profile	+10°C ... +30°C
Dimensions L x W x H	36 x 13 x 26 mm
Weight	0.009 kg

88167384 | Plate metal adjustable

RoHS



Size in mm

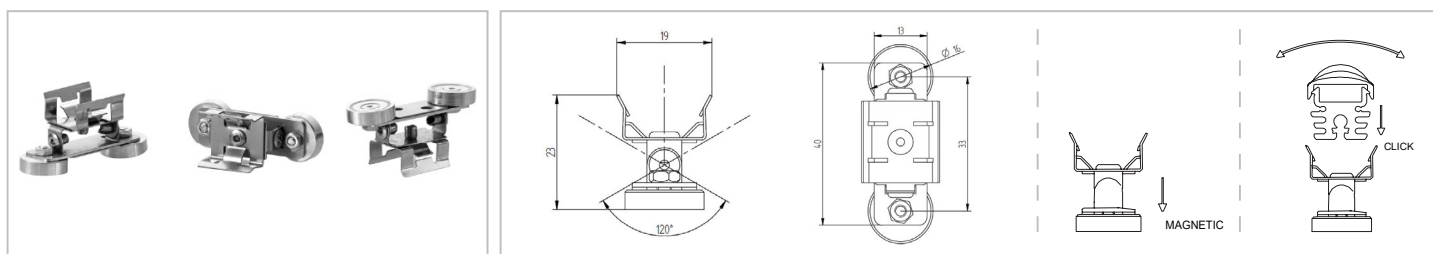
- Material: Metal
- Angle adjustable -60° bis +60°

TECHNICAL DATA

Ambient temperature finally installed	-30°C ... +80°C
Ambient temperature during mounting the engine or the profile	+10°C ... +30°C
Dimensions L x W x H	40 x 19 x 19 mm
Weight	0.010 kg

88167385 | Plate metal adjustable magnetic

RoHS



Size in mm

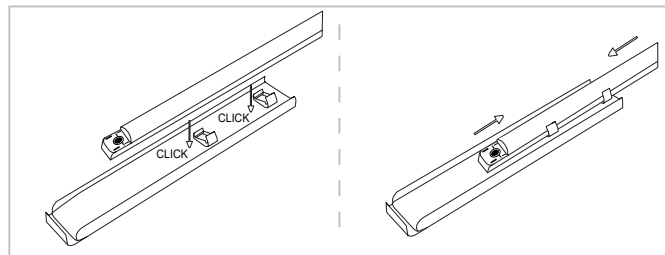
- Material: Metal
- Angle adjustable -60° bis +60°

TECHNICAL DATA

Ambient temperature finally installed	-30°C ... +80°C
Ambient temperature during mounting the engine or the profile	+10°C ... +30°C
Dimensions L x W x H	49 x 19 x 23 mm
Weight	0.024 kg

88167377 | Shelf holder

RoHS



Size in mm

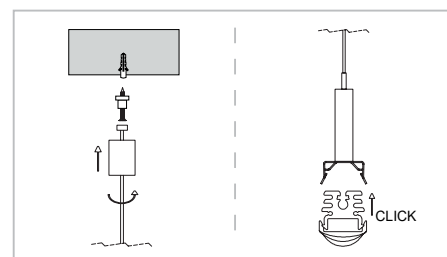
- Use: Below lower shelves
- Material: Plastic
- Angle: Preconfigured at 30° for optimal illumination of the goods on show below
- Fixing: Thanks to the support on the lower shelf display area, simple to install using the groove provided on the outer sides of the shelf holders (caution: left and right versions of the shelf holders)

TECHNICAL DATA

Ambient temperature finally installed	-30°C ... +30°C
Ambient temperature during mounting the engine or the profile	+10°C ... +30°C
Dimensions L x W x H	21 x 3.5 x 1.5 mm / complete shelf holder 21 x 8.5 x 1.5mm
Weight	24 g (weight per pair 48g)

Suspension kit

RoHS



ORDERING DATA

Art. NR.	Length (mm)	TYPE	Materiales
8021	3000	8021 GT1 LM-ATS/WM/3m	Steel, plastic
8022	5000	8022 GT1 LM-ATS/WM/5m	Steel, plastic
8023	7000	8023 GT1 LM-ATS/WM/7m	Steel, plastic
8024	10000	8024 GT1 LM-ATS/WM/10m	Steel, plastic